

NOTES:

- 1 - DIMENSIONS SHOWN ARE INCHES; MULTIPLY BY 25.4 TO OBTAIN MM.
- 2 - UNLESS OTHERWISE NOTED; ALL HARDWARE USED ARE U.S. TYPE.

THE INFORMATION CONTAINED IN THIS DRAWING IS THE SOLE PROPERTY OF VUTEC CORPORATION AND REPRODUCTION IN PART OR AS A WHOLE WITHOUT THE WRITTEN PERMISSION OF VUTEC CORPORATION IS PROHIBITED

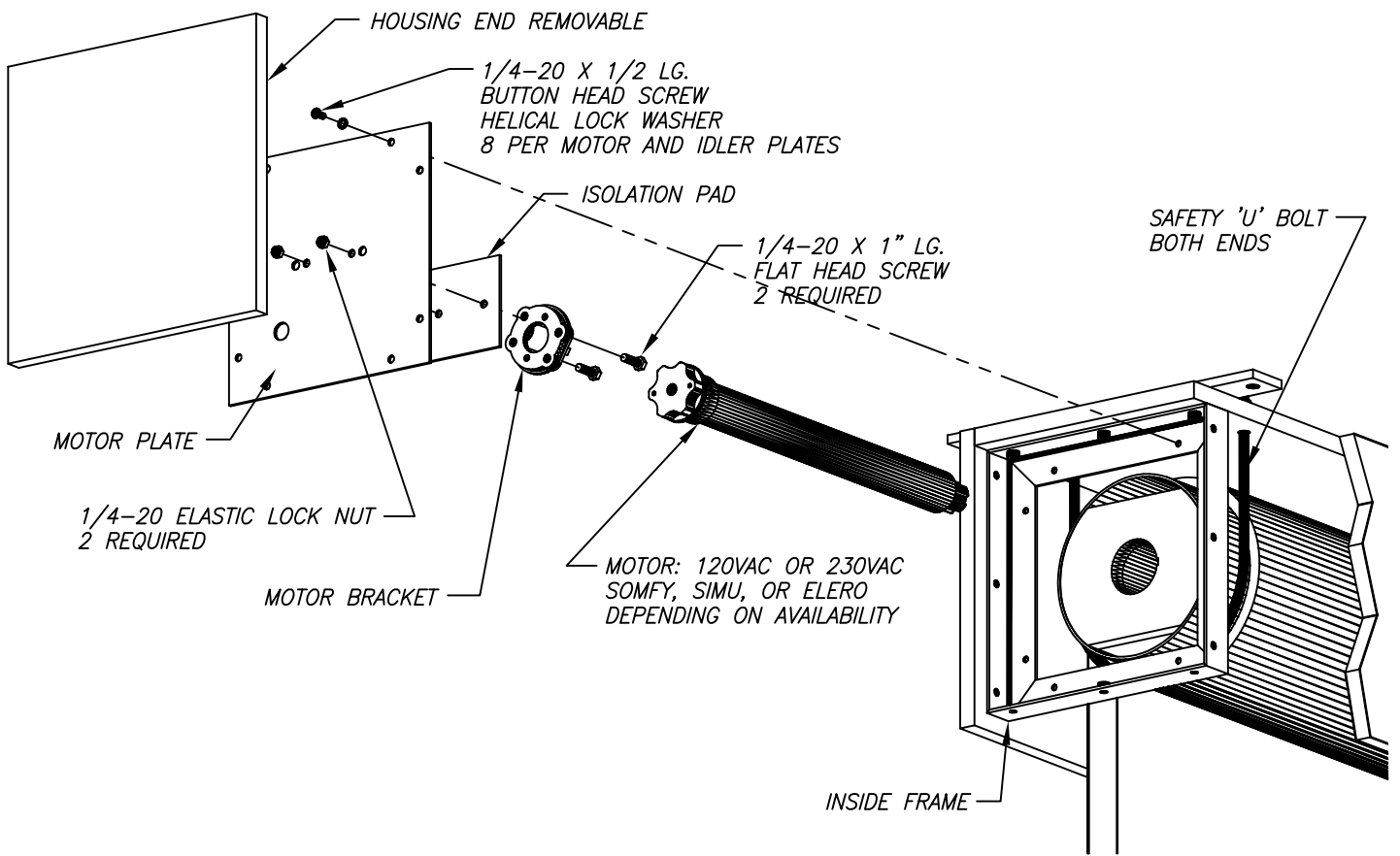
VUTEC CORPORATION

11711 W. Sample Road, Coral Springs FL 33065

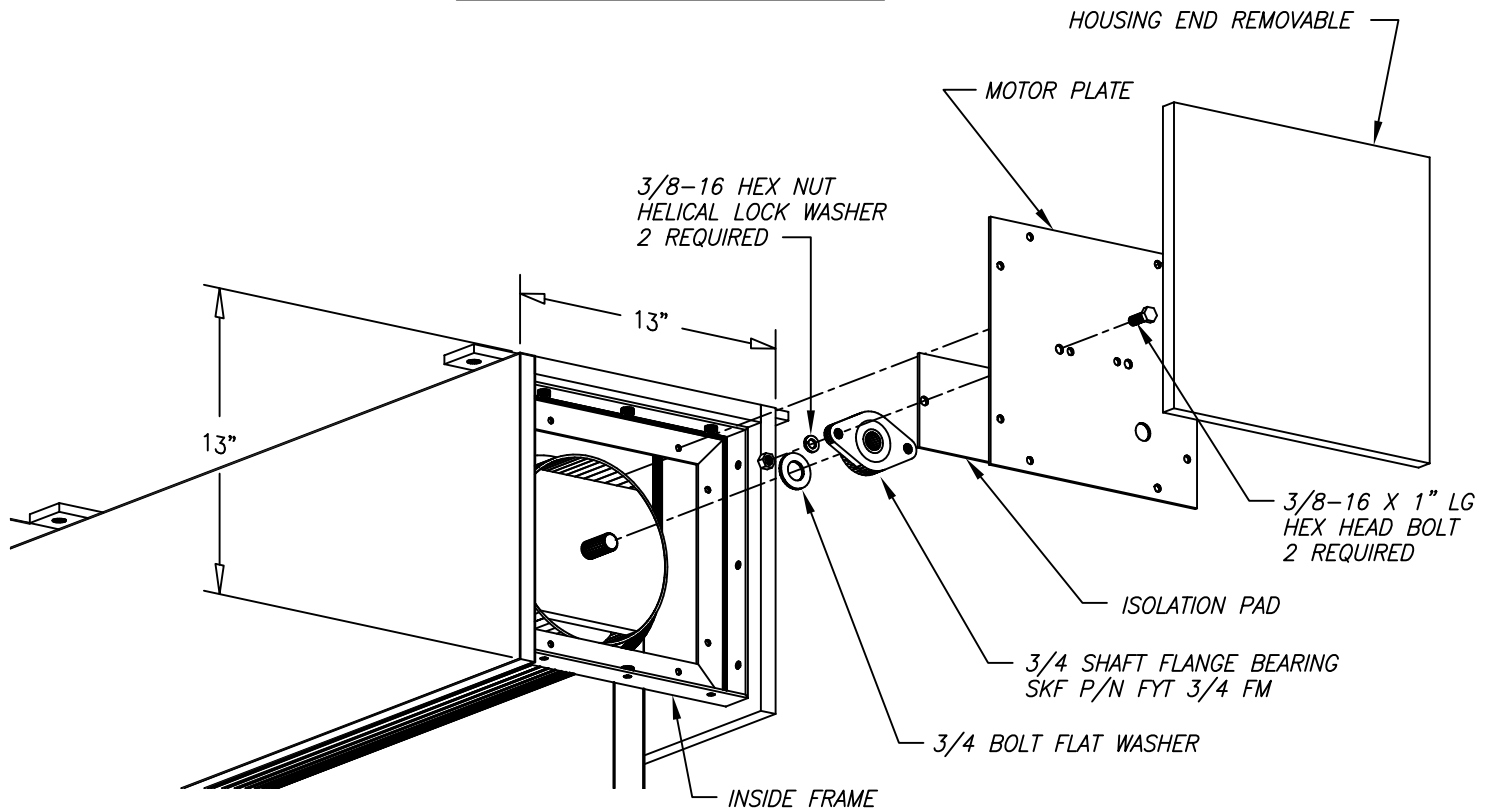
DRAWN BY
02/05/2018 TM
CHECKED BY

DESCRIPTION
ASSEMBLY ILLUSTRATION
LECTRIC 2 C MDF - 8" ROLLER

DRAWING NO.
L2CMDF-8R-INSTL_3D
SCALE: 1/16
REV A



MOTOR END ASSEMBLY



IDLER END ASSEMBLY

THE INFORMATION CONTAINED IN THIS DRAWING IS THE SOLE PROPERTY OF VUTEC CORPORATION AND REPRODUCTION IN PART OR AS A WHOLE WITHOUT THE WRITTEN PERMISSION OF VUTEC CORPORATION IS PROHIBITED

<h1>VUTEC CORPORATION</h1> <p>11711 W. Sample Road, Coral Springs FL 33065</p>		
DRAWN BY 02/05/2018 TM	DESCRIPTION ASSEMBLY ILLUSTRATION LECTRIC 2 C MDF - 8" ROLLER	DRAWING NO. L2CMDf-8R-INSTL_3D
CHECKED BY	SCALE: 1/8	REV A