

NOTES:

- 1 - DIMENSIONS SHOWN ARE INCHES; MULTIPLY BY 25.4 TO OBTAIN MM.
- 2 - UNLESS OTHERWISE NOTED; ALL HARDWARE USED ARE U.S. TYPE.

THE INFORMATION CONTAINED IN THIS DRAWING IS THE SOLE PROPERTY OF VUTEC CORPORATION AND REPRODUCTION IN PART OR AS A WHOLE WITHOUT THE WRITTEN PERMISSION OF VUTEC CORPORATION IS PROHIBITED

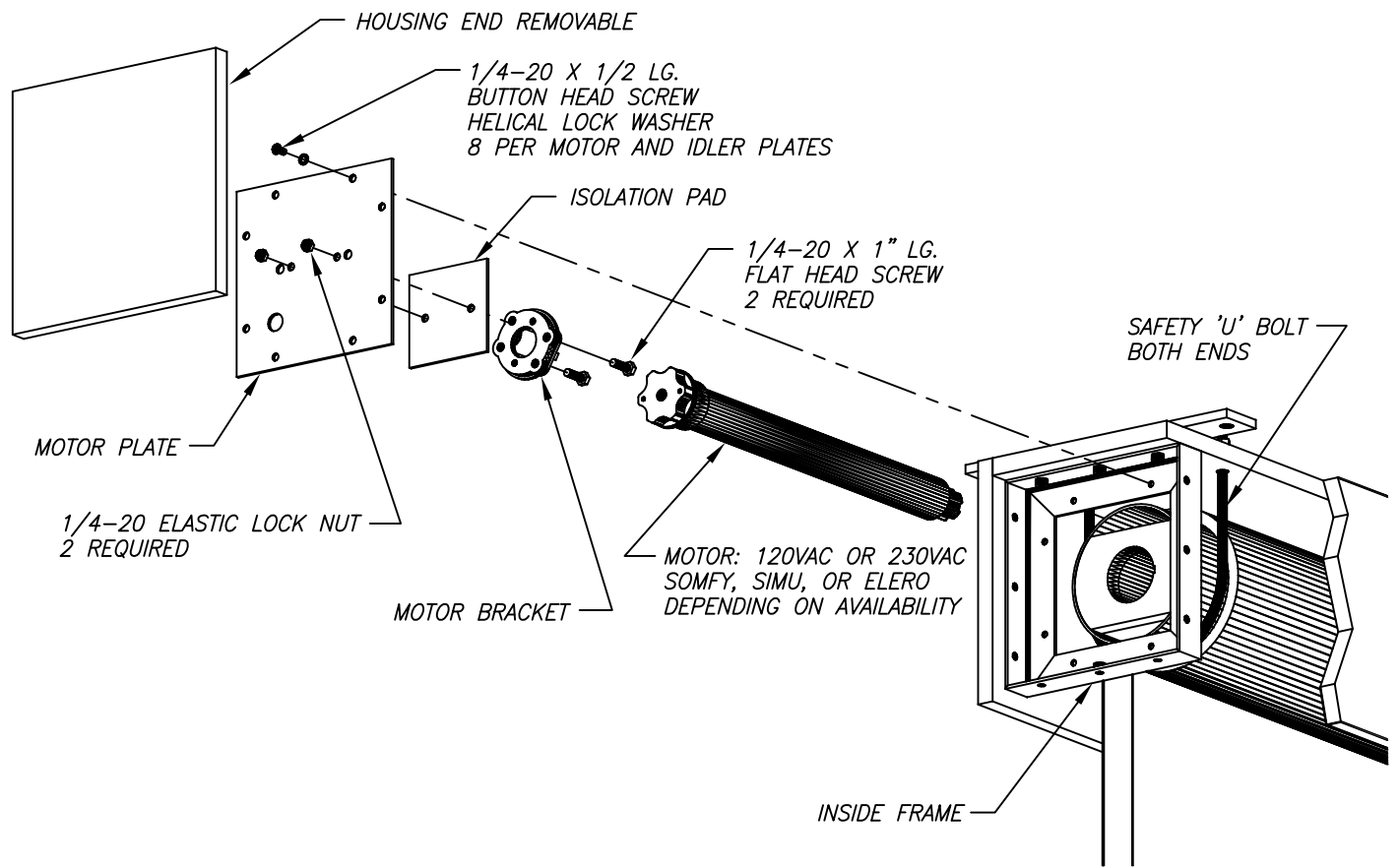
VUTEC CORPORATION

11711 W SAMPLE ROAD, CORAL SPRINGS FL 33065

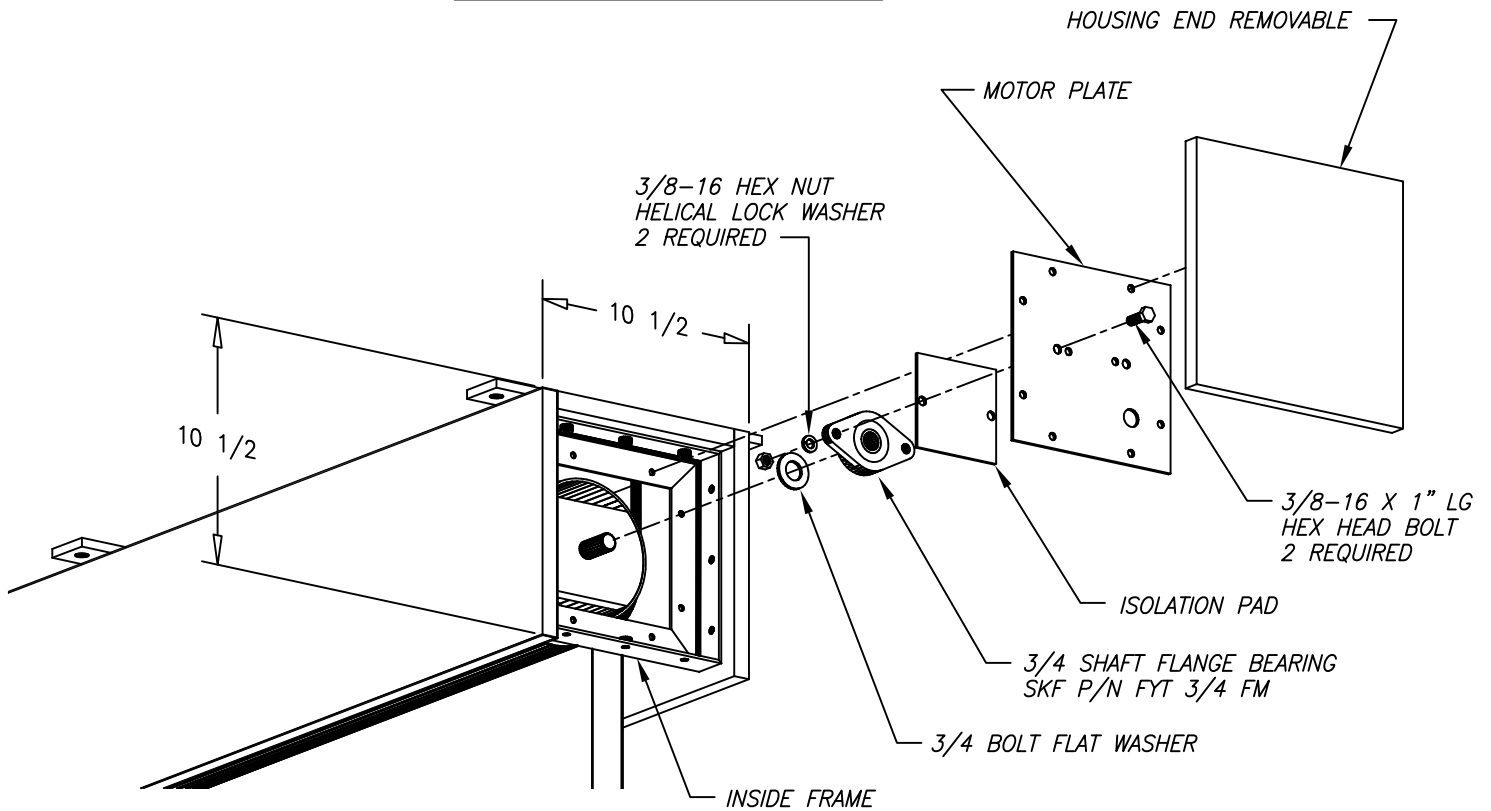
DRAWN BY
02/02/2018 TM
CHECKED BY

DESCRIPTION
ASSEMBLY ILLUSTRATION
LECTRIC 2 C MDF - 6" ROLLER

DRAWING NO.
L2CMDF-6R-INSTL_3D
SCALE: 1/16
REV
A



MOTOR END ASSEMBLY



IDLER END ASSEMBLY

<p>THE INFORMATION CONTAINED IN THIS DRAWING IS THE SOLE PROPERTY OF VUTEC CORPORATION AND REPRODUCTION IN PART OR AS A WHOLE WITHOUT THE WRITTEN PERMISSION OF VUTEC CORPORATION IS PROHIBITED</p>	<h1>VUTEC CORPORATION</h1> <p>11711 W SAMPLE ROAD, CORAL SPRINGS FL 33065</p>		
	<p>DRAWN BY 02/02/2018 TM</p>	<p>DESCRIPTION ASSEMBLY ILLUSTRATION LECTRIC 2 C MDF - 6" ROLLER</p>	<p>DRAWING NO. L2CMDf-6R-INSTL_3D</p>
	<p>CHECKED BY</p>	<p>SCALE: 1/8</p>	<p>REV A</p>