

NOTES:  
 1- DIMENSIONS SHOWN ARE INCHES; MULTIPLY BY 25.4 TO OBTAIN MM.  
 2- UNLESS OTHERWISE NOTED; ALL HARDWARE USED ARE U.S. TYPE.

SHEET 1 OF 2

THE INFORMATION  
 CONTAINED IN THIS  
 DRAWING IS THE SOLE  
 PROPERTY OF VUTEC  
 CORPORATION AND  
 REPRODUCTION IN PART  
 OR AS A WHOLE  
 WITHOUT THE WRITTEN  
 PERMISSION OF VUTEC  
 CORPORATION IS  
 PROHIBITED

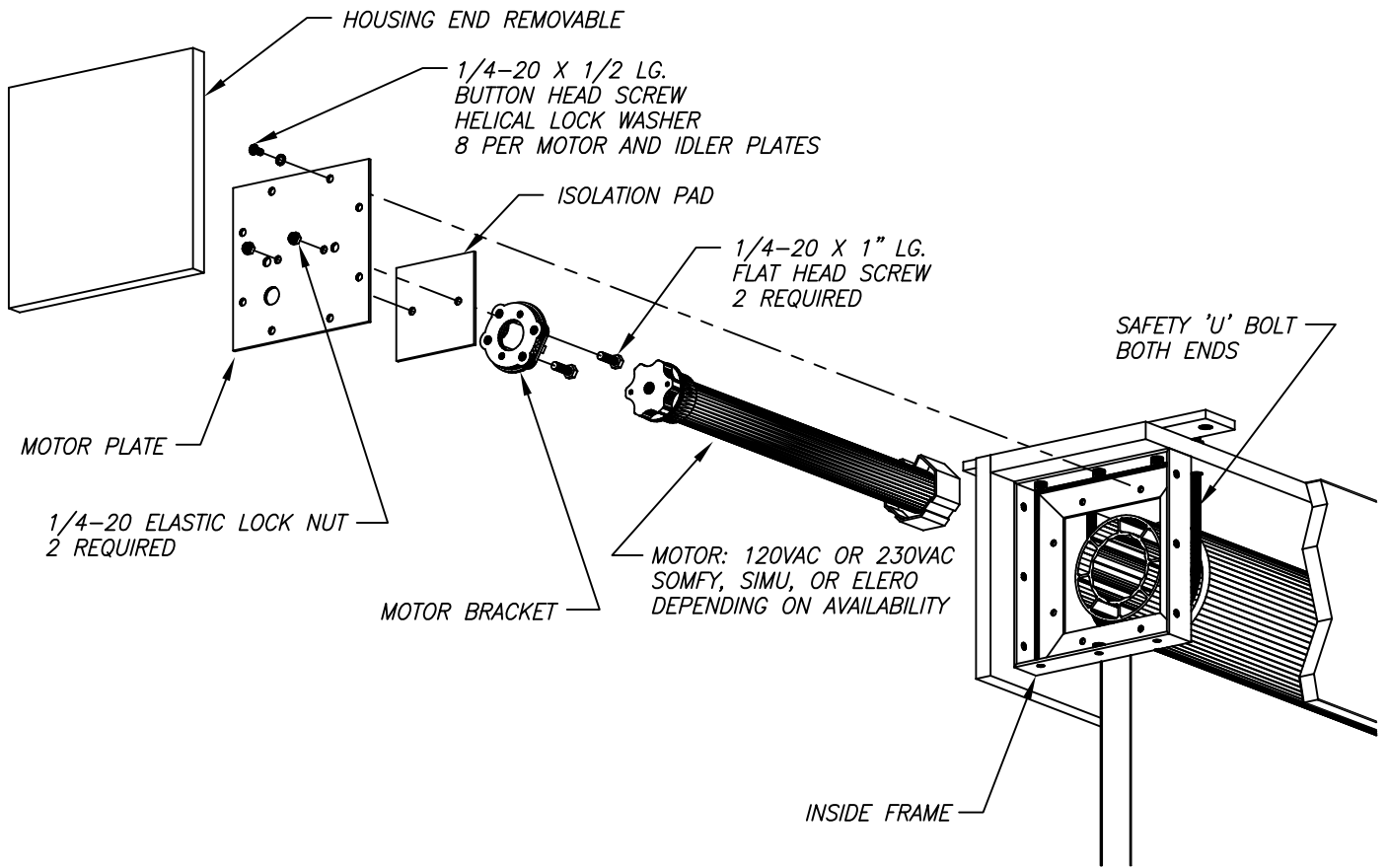
# VUTEC CORPORATION

11711 W SAMPLE ROAD, CORAL SPRINGS FL 33065

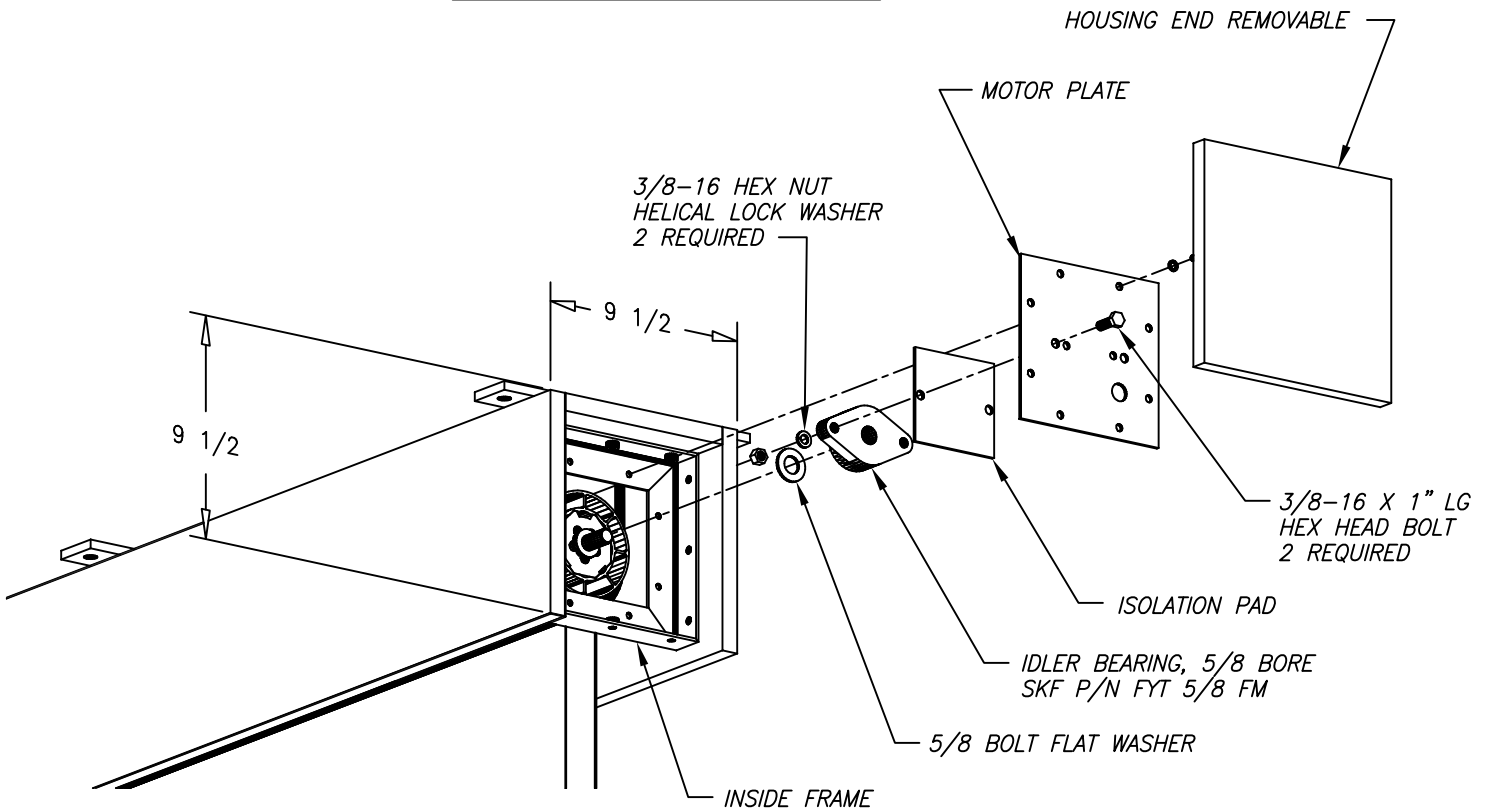
DRAWN BY  
 02/02/2018 TM  
 CHECKED BY

DESCRIPTION  
 ASSEMBLY ILLUSTRATION  
 LECTRIC 2 C MDF 4 1/2"ROLLER

DRAWING NO.  
 L2CMDf-450R-INSTL\_3D  
 SCALE: 1/16  
 REV A



MOTOR END ASSEMBLY



IDLER END ASSEMBLY

<p>THE INFORMATION CONTAINED IN THIS DRAWING IS THE SOLE PROPERTY OF VUTEC CORPORATION AND REPRODUCTION IN PART OR AS A WHOLE WITHOUT THE WRITTEN PERMISSION OF VUTEC CORPORATION IS PROHIBITED</p>	<h1>VUTEC CORPORATION</h1> <p>11711 W SAMPLE ROAD, CORAL SPRINGS FL 33065</p>		
	<p>DRAWN BY 02/02/2018 TM</p>	<p>DESCRIPTION ASSEMBLY ILLUSTRATION LECTRIC 2 C MDF 4 1/2" ROLLER</p>	<p>DRAWING NO. L2CMDf-450R-INSTL_3D</p>
	<p>CHECKED BY</p>	<p>SCALE: 1/8</p>	<p>REV A</p>