



ArtScreen designer is a free tool available on the Vutec website. This interactive tool allows consumers to select and preview the look of an ArtScreen and choose different artwork, liner and frame. For a personalized print, customers can upload their own images onto the designer tool.

Order extra art to replace your current art or hang extra art on the wall. We custom make art and frames.

**Want to replace your current art?
You can order the art separately.**



www.vutec.com/artscreen

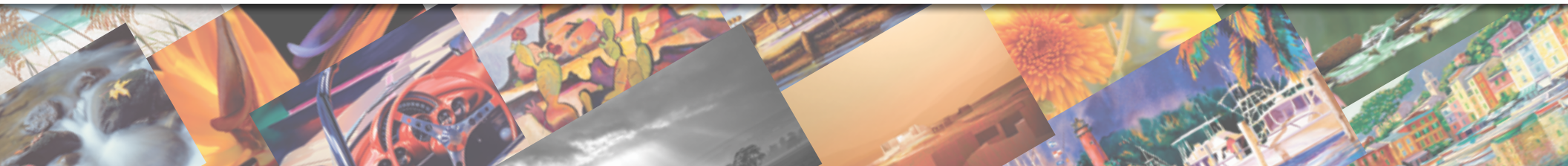


Transform Any Flat Panel TV Into
a Finished Framed Product and a
Stylish Room Accessory



Authorized Dealer

Transform
the
Ordinary
into the
Extraordinary



Frames and Liners

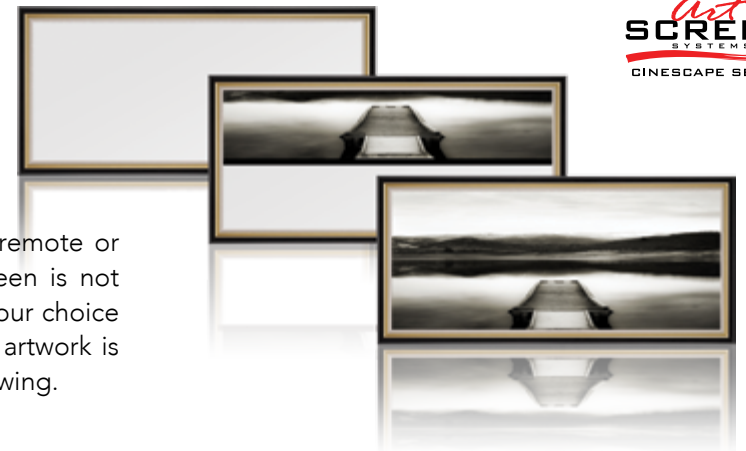
A wide assortment of elegant frames and liners for ArtScreen are available and viewable on the Vutec website.



ArtScreen CineScope

Motorized Art System for Front and Rear Video Projection Screens

ArtScreen CineScope transforms a video projection screen into a work of art. Inside a beautiful hardwood frame, the artwork ascends or descends with the touch of a remote or through home automation. When the screen is not in use, the digital art-on-canvas image of your choice is displayed within the frame. When your artwork is retracted, the video display is visible for viewing.



ArtScreen
SYSTEMS
BY VUTEC
CINESCOPE SERIES

**Above frames are samples only. More frames are available.*



ArtScreen

Art meets technology in one product. With one touch of a remote or through home automation, ArtScreen transforms your TV or Video Projection Screen into a breathtaking work of art that enhances the décor of any room.

Inside an elegant hardwood frame, an ultra-quiet motor raises or lowers a museum quality Giclée canvas print - a quality art reproduction that looks virtually and amazingly like the artist's original.

When the television or screen is not in use, the artwork of your choosing is displayed within the frame. When the artwork is retracted, the video display is visible for viewing.

Adaptable for virtually any room - great room, family room, living room, bedroom or den. Our galleries display a vast choice of artwork reproductions, frame styles and liners. Visit our website at www.vutec.com/artscreen to select from hundreds of fine art reproductions.



Family portraits, personalized art or custom artwork can be reproduced to create an individualized or captivating work of art. Art can be changed at anytime.

Both recessed and surface mounted versions are available to complement any interior design or décor.

ArtScreen is available for video displays from 32" to 120" diagonal. All orders are custom made in the U.S.A.



Soundscape 360

The SoundScape 360 is Vutec's ArtScreen designed to accommodate the new single speaker surround sound technology or the center channel of a speaker system.



Theater Art Systems with Masking

THEATER ART ON A PROJECTION SCREEN, THE ULTIMATE EXPERIENCE!

Theater Art Systems with masking is the ultimate for a home theater system, providing the format versatility so much in demand today. It transforms a standard video projection screen with masking into a work of art.

This advanced screen/art/masking system has a motorized Giclée canvas artwork that covers the screen completely, transforming it into a framed work of art on the wall when not in use. Many sizes and an almost unlimited choice of art is available. Theater Art Systems

with masking truly meets the changing needs of the home theater enthusiasts.

Masking allows you to go from a HDTV 16:9 aspect ratio to a Widescreen 2.35:1 format.

Transform your HDTV ratio to Widescreen format with ease!

Easily replace art anytime!

Replace the art on your ArtScreen or Theater Art anytime.
Easy to do, easy to order.

Vertical Masking



THEATER
Art
SYSTEMS
BY VUTEC



Horizontal Masking

- Designed for native 2.35:1 or 16:9
- Horizontal or vertical masking panels available
- The design system achieves an optimum shadowless viewing experience with no space between the masking panels and projection screen surface
- Combines the vertical masking system with a fixed height that automatically becomes 16:9 for anamorphic lens projectors
- Combines the horizontal masking system with a fixed width that automatically becomes a 2.35:1 CinemaScope (movies) aspect ratio