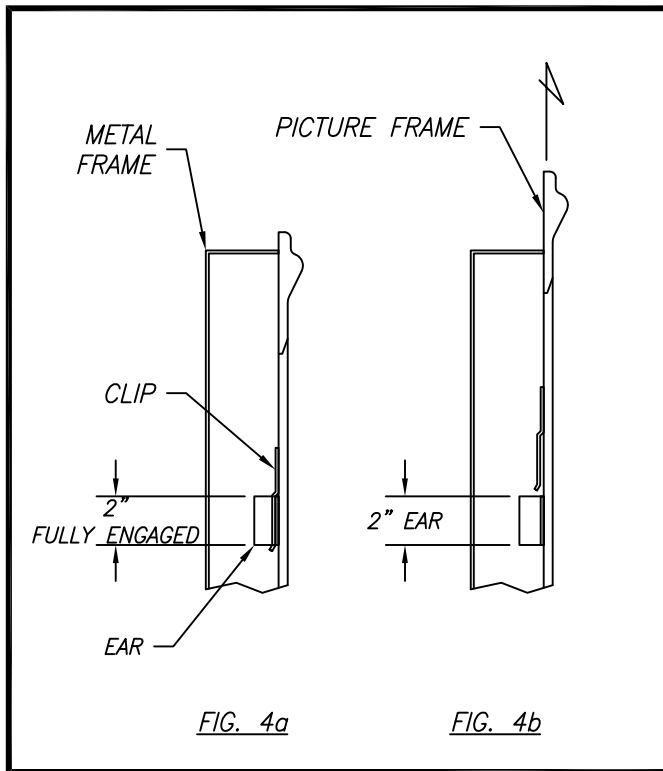
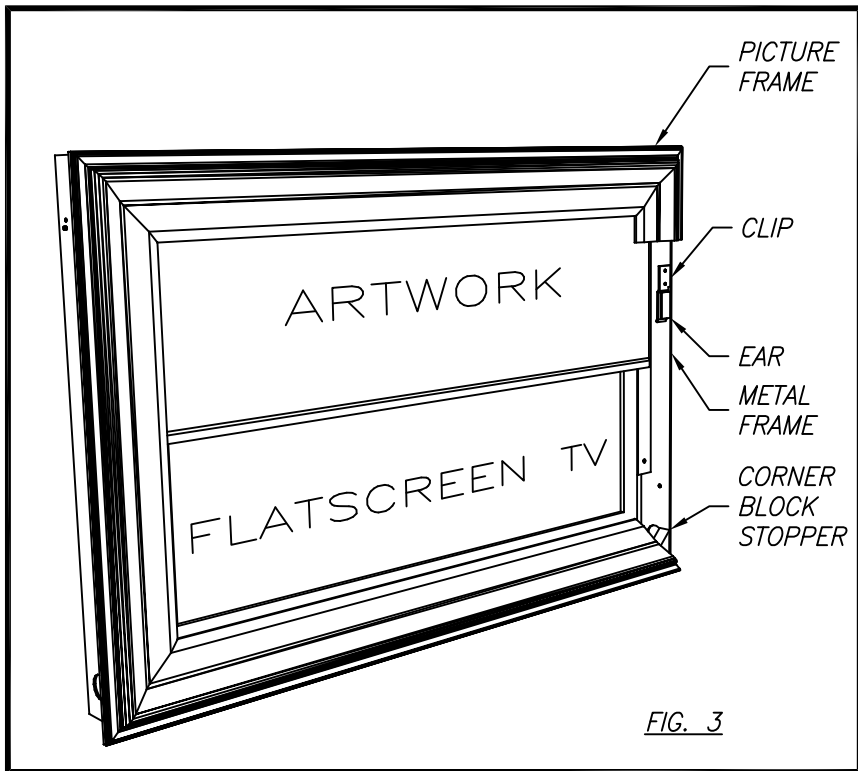


## PICTURE FRAME REMOVAL

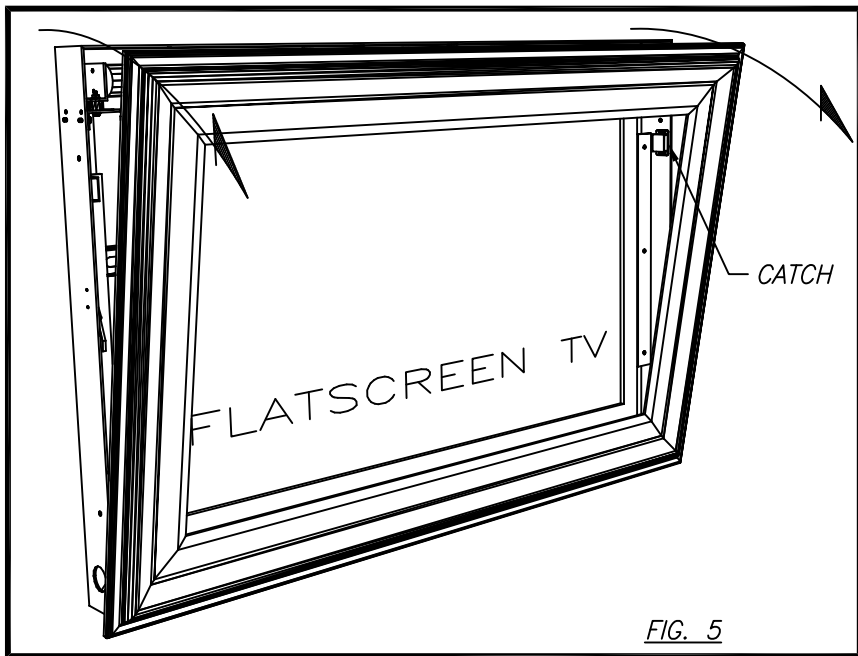


BACKSIDE OF PICTURE FRAME IS IN FULL CONTACT WITH FRONT EDGES OF METAL FRAME. ON BACKSIDE OF PICTURE FRAME THERE ARE EITHER ONE OR TWO SETS OF CLIPS DEPENDING ON SIZE, AND A SET OF CORNER BLOCK STOPPERS AT BOTTOM. CLIPS HOOK ONTO EARS WELDED TO SIDES OF METAL FRAME TO HOLD PICTURE FRAME IN PLACE, SEE FIG. 3.

WARNING! ARTWORK MUST BE ALL ROLLED UP  
PRIOR REMOVING FRAME

PICTURE FRAME REMOVAL: SLIDE OR PUSH PICTURE FRAME UP ABOUT TO 2" TO RELEASE CLIP FROM METAL FRAME EAR AS SHOWN IN FIGURES 4a AND 4b, PULL PICTURE FRAME STRAIGHT OUT AND PLACE ASIDE.

TRANSFER EXISTENT CLIPS IN BACKSIDE OF OLD  
PICTURE FRAME TO NEW PICTURE FRAME.



WARNING! ARTWORK MUST BE ALL ROLLED UP  
PRIOR REMOVING FRAME

IF PICTURE FRAME IS HELD BY THE OLD CATCH  
CONFIGURATION THEN DO NOT PUSH UP OR PULL  
PICTURE FRAME STRAIGHT OUT.

PULL PICTURE FRAME FROM THE TOP AS SHOWN IN FIG. 5, REMOVE OLD FRAME.

TRANSFER EXISTENT CATCH CLIPS IN BACKSIDE OF  
OLD PICTURE FRAME TO NEW PICTURE FRAME.

THE INFORMATION CONTAINED IN THIS DRAWING IS THE SOLE PROPERTY OF <b>VUTEC</b> <b>CORPORATION</b> AND REPRODUCTION IN PART OR AS A WHOLE WITHOUT THE WRITTEN PERMISSION OF <b>VUTEC</b> <b>CORPORATION</b> IS PROHIBITED	<h1 style="text-align: center;">VUTEC CORPORATION</h1> <p style="text-align: center;">11711 W. Sample Road, Coral Springs, FL 33065</p>		
	DRAWN BY  <div style="border: 1px solid black; padding: 2px; display: inline-block;">12/15/17 TM</div>	DESCRIPTION  <div style="border: 1px solid black; padding: 5px; text-align: center;">           PICTURE FRAME REMOVAL ART-FRAME REPLACEMENT PROGRAM ARTSCREEN         </div>	DRAWING NO.  <div style="border: 1px solid black; padding: 2px; display: inline-block;">ASC-ARTFRAME RPLC</div>
CHECKED BY  <div style="border: 1px solid black; height: 20px; width: 100%;"></div>		SCALE: 1/1	REV  <div style="border: 1px solid black; padding: 2px; display: inline-block;">A</div>