

SURFACED MOUNT – STEP 1:

- 1 – DETERMINE LOCATION FOR TV. TV IS CENTERED IN BOX WHEN DONE.
- 2 – DETERMINE PROPER MOUNTING SCREWS FOR INSTALLATION IF SUPPLIED SCREWS ARE NOT SUITABLE.
- 3 – DETERMINE ELECTRICAL AND A/V CABLES REQUIREMENTS.
- 4 – INSTALL MOUNTING ANGLE. BE SURE IT IS LEVEL.
- 5 – INSTALL 1" SQUARE RUBBER SPACERS TO MOUNTING HOLES OF BOX.
- 6 – PLACE BOX ONTO ANGLE. MOVE SIDE TO SIDE TO DESIRED LOCATION. INSTALL MOUNTING SCREWS TO SECURE BOX TO LOCATION.
- 7 – ADD A COMPLETE SET VELCRO STRIPS (HOOK & LOOP) TO EACH VELVET COVER.
- 8 – REMOVE LINER TO EXPOSE ADHESIVE BACK ON VELCRO STRIPS. CAREFULLY APPLY COVER TO SIDE OF BOX WITH FRONT EDGES FLUSHED.
- 9 – PLACE THE TV SUPPORTS AS FAR APART AS POSSIBLE. INSTALL CLAMP BAR TO HOLD THEM IN PLACED.

NOTE: IT IS THE RESPONSIBILITY OF THE INSTALLER TO DETERMINE THE APPROPRIATE WALL ANCHORS REQUIRED TO SUPPORT THE COMPLETE UNIT. IF THE SUPPLIED HARDWARE IS INSUFFICIENT TO SUPPORT THE UNIT WEIGHT, MORE HEAVY DUTY HARDWARE SHOULD BE USED.

THE INFORMATION
CONTAINED IN THIS
DRAWING IS THE SOLE
PROPERTY OF VUTEC
CORPORATION AND
REPRODUCTION IN PART
OR AS A WHOLE
WITHOUT THE WRITTEN
PERMISSION OF VUTEC
CORPORATION IS
PROHIBITED

VUTEC CORPORATION

11711 W. SAMPLE ROAD. CORAL SPRINGS, FL 33065

DRAWN BY

04/08/09 HN

CHECKED BY

DESCRIPTION

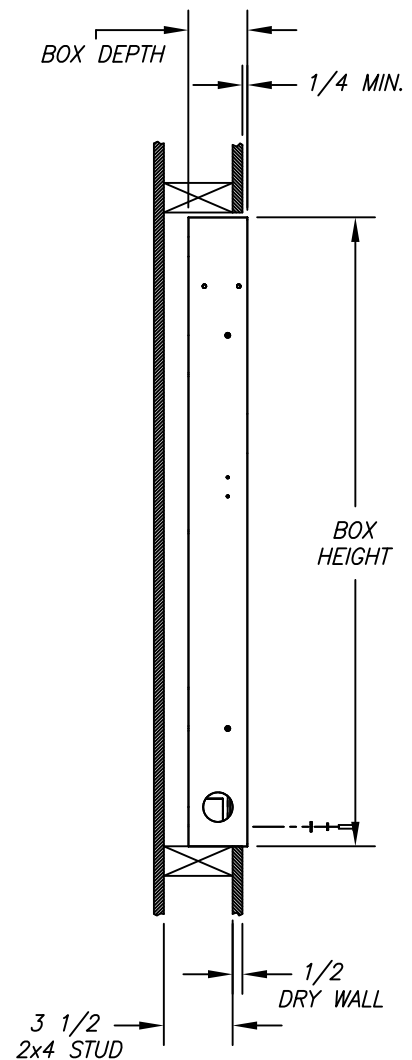
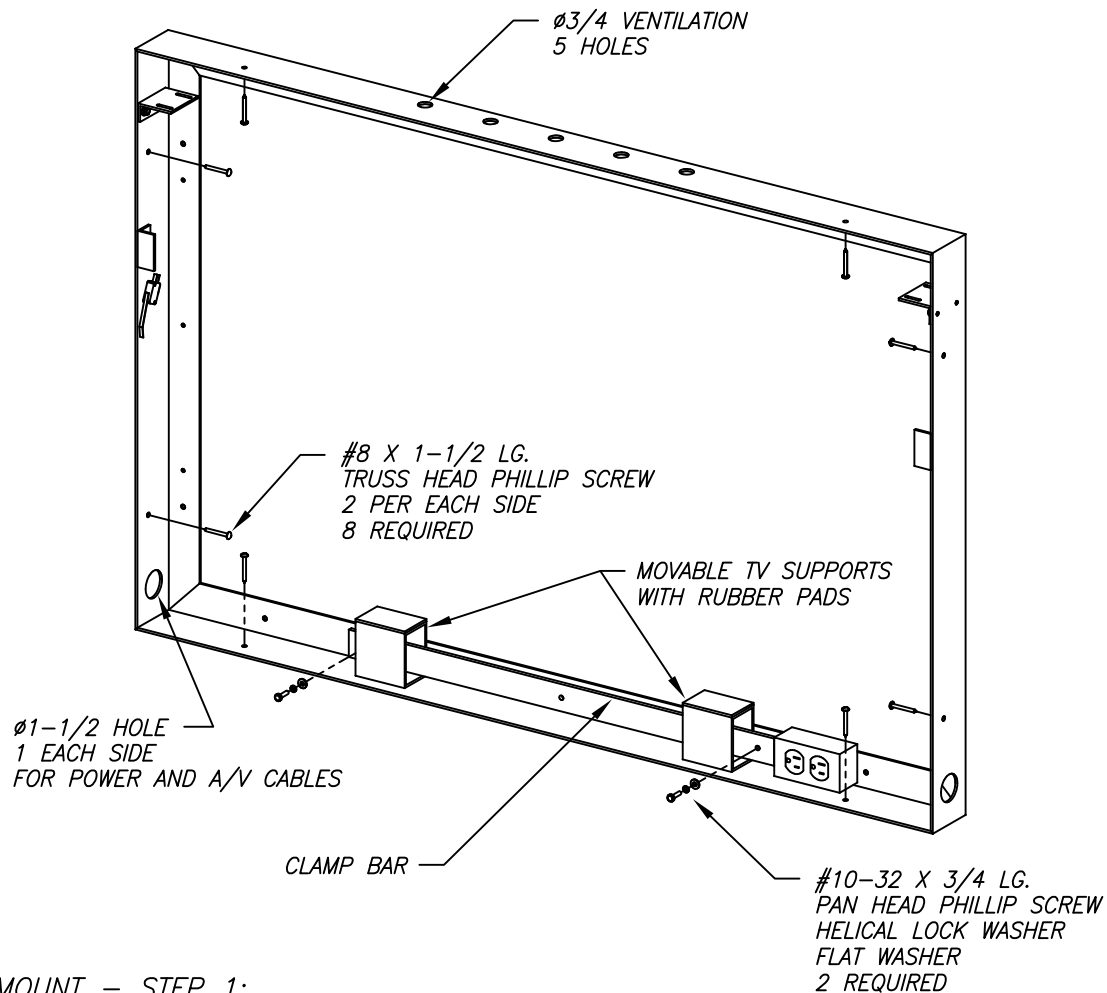
SURFACE MOUNTED
ART SCREEN – SLIMLINE

DRAWING NO.

INSTL-SLIM_BOX

SCALE: 1/10

REV
A



TYPICAL WALL

RECESSED MOUNT – STEP 1:

- 1 – PLACE THE BOX INSIDE CUT OUT HOLE.
- 2 – DETERMINE PROPER MOUNTING SCREWS FOR INSTALLATION IF SUPPLIED SCREWS ARE NOT SUITABLE.
- 3 – DETERMINE ELECTRICAL AND A/V CABLES REQUIREMENTS.
- 4 – INSTALL BOX AND BE SURE IT IS LEVEL, PLUMB AND MINIMUM OF 1/4 PROTRUDING WALL FACE. ADD SHIMS (NOT SUPPLIED) AS NECESSARY.
CAUTION: BOX MUST REMAIN SQUARE IN ITS ORIGINAL SHAPE.
- 5 – PLACE THE TV SUPPORTS AS FAR APART AS POSSIBLE. INSTALL CLAMP BAR TO HOLD THEM IN PLACED.

THE INFORMATION CONTAINED IN THIS DRAWING IS THE SOLE PROPERTY OF VUTEC CORPORATION AND REPRODUCTION IN PART OR AS A WHOLE WITHOUT THE WRITTEN PERMISSION OF VUTEC CORPORATION IS PROHIBITED

VUTEC CORPORATION

11711 W. SAMPLE ROAD. CORAL SPRINGS, FL 33065

DRAWN BY

04/08/09 HN

CHECKED BY

DESCRIPTION

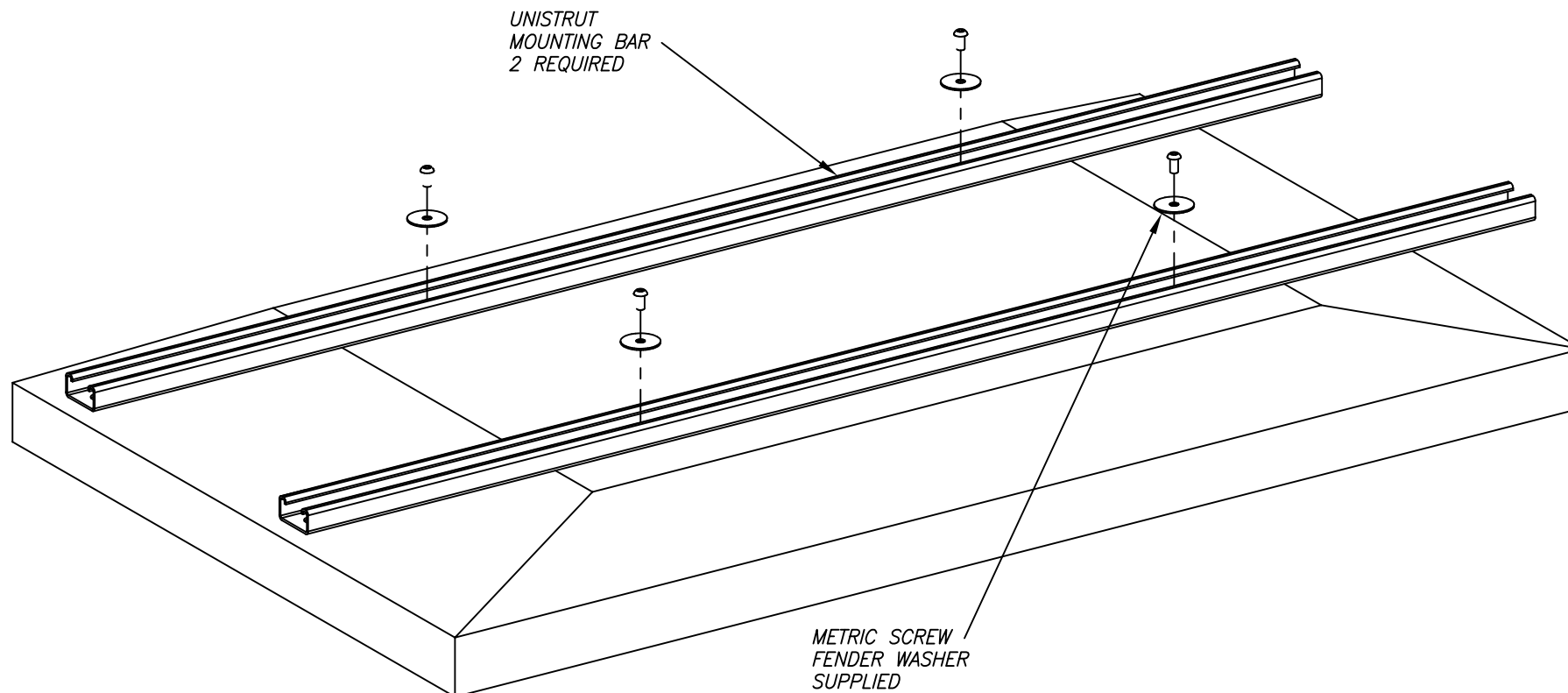
RECESS MOUNTED
ART SCREEN – SLIMLINE

DRAWING NO.

INSTL-SLIM_BOX

SCALE: 1/10

REV
A



STEP 2

- 1 – ATTACH TV MOUNTING BARS TO BACK OF TV. DEPENDING ON TV DEPTH; IT MAY NEED TO ADD SOME FENDER WASHERS OR WHITE PLASTIC SPACER BETWEEN THE BARS AND TV TO INCREASE THE REQUIRED DEPTH FOR TV PLACEMENT.
- 2 – PLACE TV IN THE METAL FRAME. IT SHOULD SITS ON THE RUBBER PADS.
- 3 – ATTACH ALL REQUIRED AV CABLES AND POWER CABLE TO TV.
- 4 – THE TV MOUNTING BARS ARE FLAT ON THE MOUNTING ANGLES WAITING TO BE HELD BY TWO VERTICAL CLAMP BARS.
NOTE: IF TV HOLE PATTERN RESULTS IN ONLY ONE MOUNTING BAR TO BE CAPTURED BY THE VERTICAL CLAMP BARS; IT IS NOT A CONCERN BECAUSE THE TV MOUNTING BAR IS SIMPLY TO PREVENT THE TV FROM TIPPING OVER.
- 5 – INSTALL THE VERTICAL CLAMP BARS TO TRAP THE TV TO ITS LOCATION.
BE SURE TV IS CENTERED SIDE TO SIDE.
- 6 – DEPENDING ON WHERE THE TV MOUNTING BARS ARE LOCATED; ANY COMBINATION OF 2 MOUNTING SCREWS FOR EACH CLAMP BAR ARE ADEQUATE TO HOLD THE TV.

THE INFORMATION
CONTAINED IN THIS
DRAWING IS THE SOLE
PROPERTY OF VUTEC
CORPORATION AND
REPRODUCTION IN PART
OR AS A WHOLE
WITHOUT THE WRITTEN
PERMISSION OF VUTEC
CORPORATION IS
PROHIBITED

VUTEC CORPORATION

11711 W. SAMPLE ROAD. CORAL SPRINGS, FL 33065

DRAWN BY

06/19/13 PCB

CHECKED BY

DESCRIPTION

MOUNTING BAR
ART SCREEN – SLIMLINE

DRAWING NO.

INSTL-SLIM_MBAR

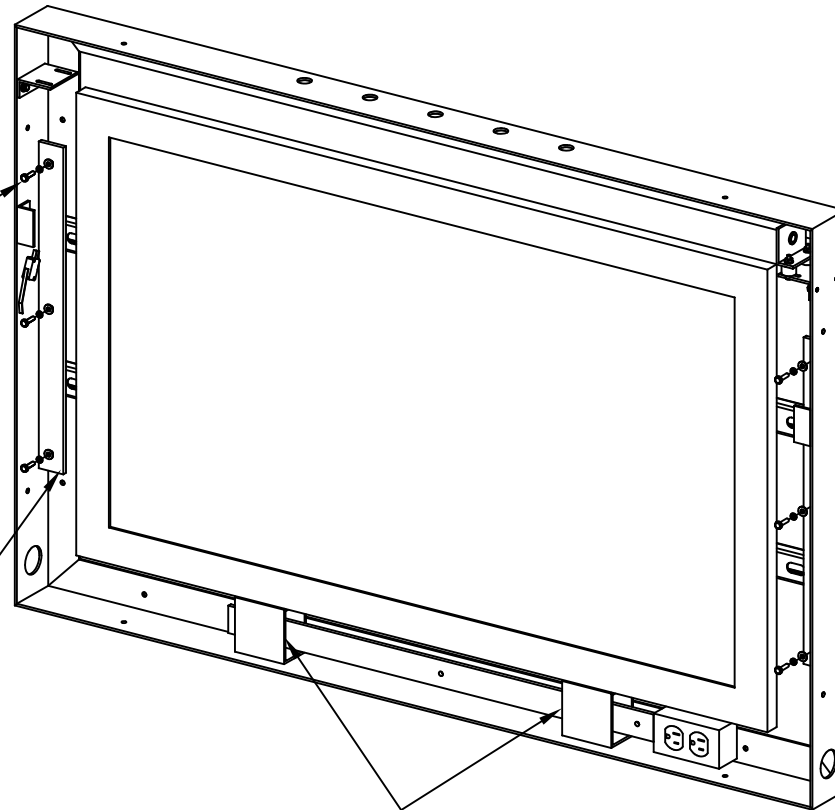
SCALE: 1/8

REV
B

#10 X 1 1/4 LG.
PAN HEAD PHILLIP SCREW
FLAT & HELICAL LOCK WASHERS
3 EACH SIDE
6 REQUIRED

VERTICAL CLAMP BAR
1 EACH SIDE
2 REQUIRED

TV SUPPORTS



STEP 3:

- 1 - CONNECT ALL THE REQUIRED POWER AND A/V CABLES TO TV.
DUE TO BOX DEPTH, VUTEC SUPPLIED REPLACEMENT POWER CABLE FOR TV
WITH LOW HEAD PROFILE. USE THIS POWER CABLE FOR THE TV.
- 2 - PLACE TV ON SUPPORT PADS. TV SHOULD BE STRAIGHT UP WITH THE TWO
MOUNTING BARS BEHIND THE TV TOUCH FLAT TO TV BOX.
- 3 - INSTALL THE VERTICAL CLAMP BARS TO HOLD TV IN PLACE. A MINIMUM OF ANY TWO
SCREW COMBINATION IS REQUIRED. BE SURE TV IS CENTERED SIDE TO SIDE.
TIGHTEN THE SCREWS.

THE INFORMATION
CONTAINED IN THIS
DRAWING IS THE SOLE
PROPERTY OF VUTEC
CORPORATION AND
REPRODUCTION IN PART
OR AS A WHOLE
WITHOUT THE WRITTEN
PERMISSION OF VUTEC
CORPORATION IS
PROHIBITED

VUTEC CORPORATION

11711 W. SAMPLE ROAD. CORAL SPRINGS, FL 33065

DRAWN BY

04/08/09 HN

CHECKED BY

DESCRIPTION

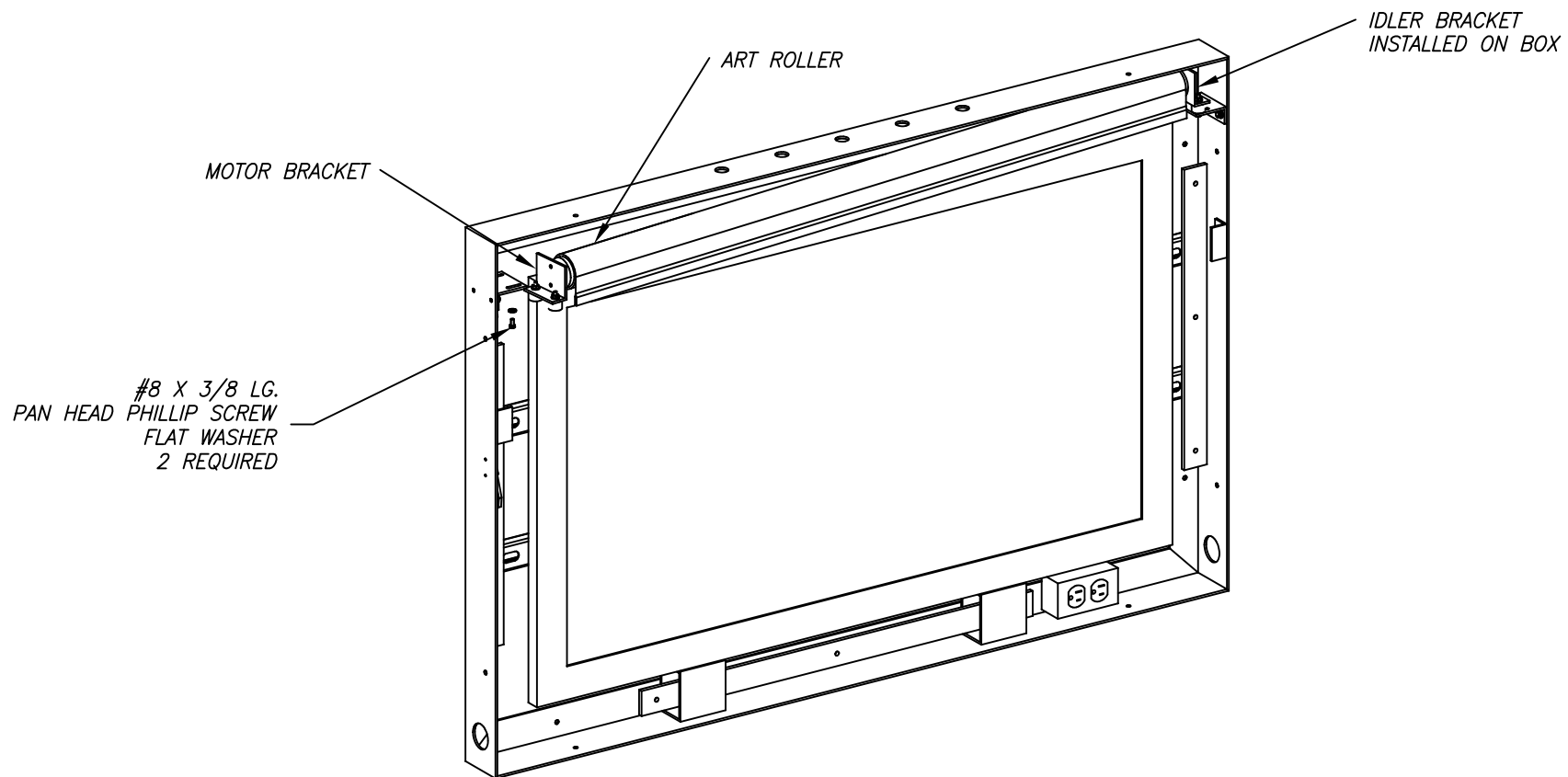
TV PLACEMENT
ART SCREEN - SLIMLINE

DRAWING NO.

INSTL-SLIM_TVIN

SCALE: 1/10

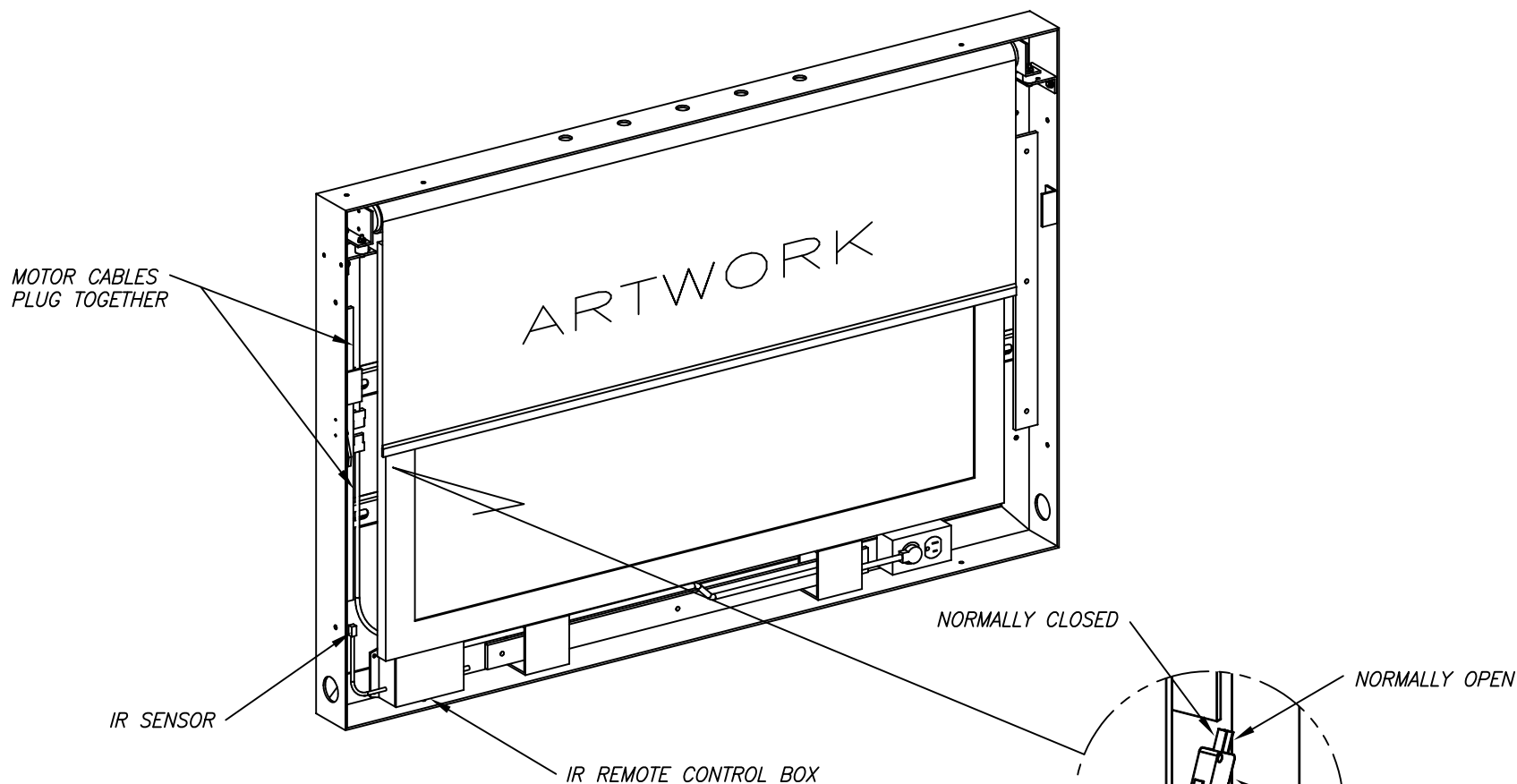
REV
B



STEP 4:

- 1 - INSTALL ART ROLLER ASSEMBLY TO BOX. THE IDLER SHAFT OF THE ROLLER TO BE ENGAGED WITH THE IDLER BRACKET FIRST THEN ANGLE IN AS SHOWN.
- 2 - BRING THE MOTOR BRACKET TO ITS LOCATION.
- 3 - INSTALL THE SCREWS TO HOLD ITS IN LOCATION. DO NOT OVER TIGHTEN THE SCREWS.

| | | | | | |
|--|---|-------------|--|------------------|--|
| THE INFORMATION CONTAINED IN THIS DRAWING IS THE SOLE PROPERTY OF VUTEC CORPORATION AND REPRODUCTION IN PART OR AS A WHOLE WITHOUT THE WRITTEN PERMISSION OF VUTEC CORPORATION IS PROHIBITED | VUTEC CORPORATION | | | | |
| | 11711 W. SAMPLE ROAD. CORAL SPRINGS, FL 33065 | | | | |
| | DRAWN BY | | DESCRIPTION | DRAWING NO. | |
| | 04/08/09 HN | | ART ROLLER INSTALLATION ART SCREEN - SLIMLINE | INSTL-SLIM_TV IN | |
| CHECKED BY | | SCALE: 1/10 | | REV B | |



STEP 5:

- 1 - INSTALL THE IR REMOTE CONTROL BOX.
- 2 - DETERMINE LOCATION FOR IR SENSOR CAN BE SEEN BY IR TRANSMITTER.
- 3 - REMOVE PROTECTIVE WRAPPING FOR ART ROLLER.
*** DO NOT INSTALL THE WEIGHT BAR AT THIS TIME ***
- 4 - USING THE TRANSMITTER, RUN THE MOTOR AND CHECK THE LIMIT SWITCHES, AS THEY MAY HAVE CHANGED DURING SHIPMENT.
- 5 - ADJUST THE LIMIT SWITCHES IF NECESSARY.
- 6 - USING THE TRANSMITTER, SEND THE SCREEN DOWN HALF WAY THEN STOP. SIMPLY PRESS EITHER OPEN-1 OR CLOSE-1 BUTTON TO STOP THE MOTOR.
- 7 - LOCATE AND INSERT THE WEIGHT BAR FOR THE ART SCREEN.
- 8 - SEND THE ART SCREEN UP.
- 9 - INSTALL THE PICTURE FRAME PER INSTRUCTION SHEET ATTACHED.
- 10 - INSTALLATION IS NOW COMPLETED.

OPTIONAL:

THE SPDT SECURITY MONITORING SWITCH MAY BE CONNECTED TO A SECURITY SYSTEM. A SIGNAL IS SENT WHEN THE PICTURE FRAME IS REMOVED.

SPDT SECURITY MONITORING SWITCH
OPTIONAL INSTALLATION
RATING: 10A, 125/250VAC, 1/2HP
OR 6A, 30VDC

THE INFORMATION
CONTAINED IN THIS
DRAWING IS THE SOLE
PROPERTY OF VUTEC
CORPORATION AND
REPRODUCTION IN PART
OR AS A WHOLE
WITHOUT THE WRITTEN
PERMISSION OF VUTEC
CORPORATION IS
PROHIBITED

VUTEC CORPORATION

11711 W. SAMPLE ROAD. CORAL SPRINGS, FL 33065

DRAWN BY

04/08/09 HN

CHECKED BY

DESCRIPTION

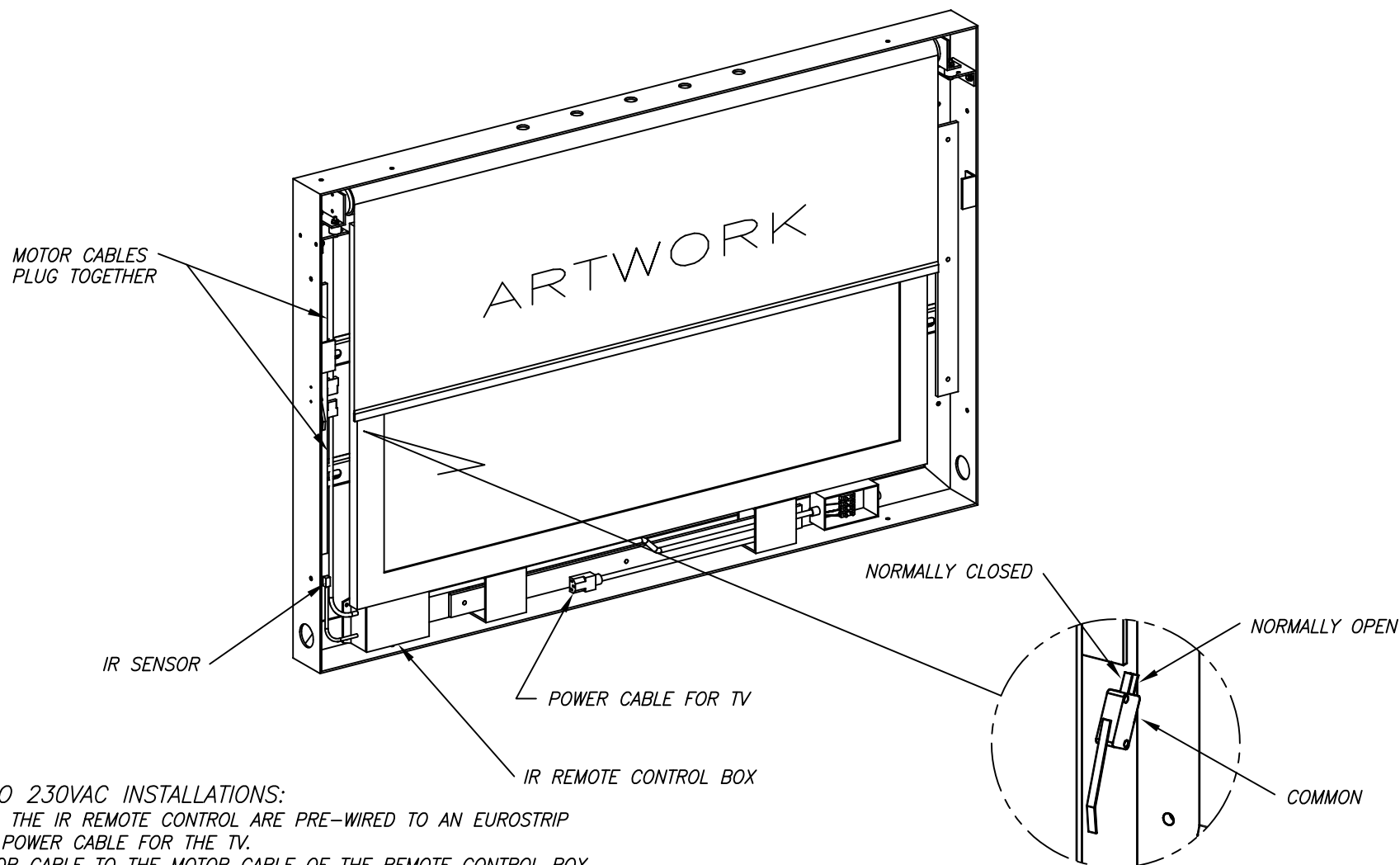
IR REMOTE CONTROL
ART SCREEN - SLIMLINE

DRAWING NO.

INSTL-SLIM_TVIN

SCALE: 1/10

REV
B



STEP 5b APPLY TO 230VAC INSTALLATIONS:

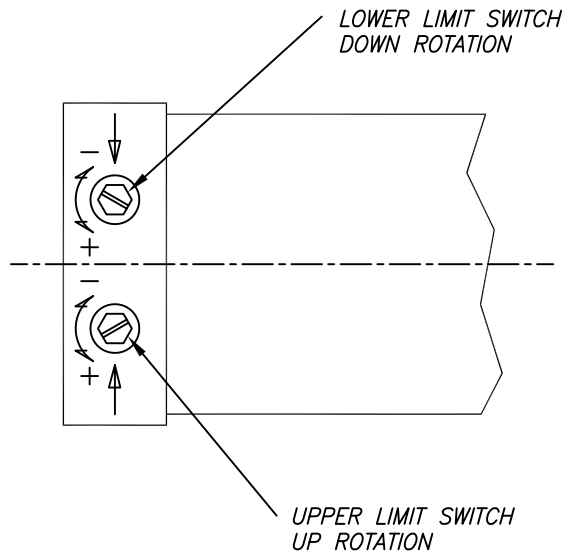
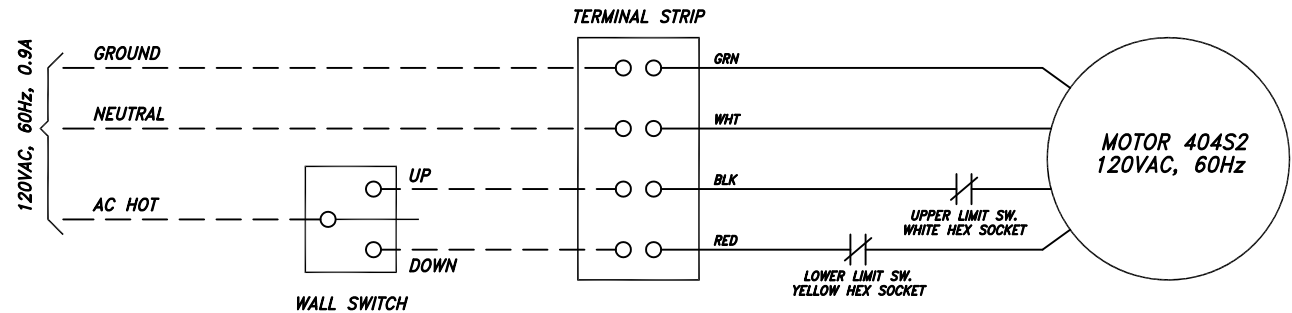
- 1 - THE WIRES FOR THE IR REMOTE CONTROL ARE PRE-WIRED TO AN EUROSTRIP INCLUDING THE POWER CABLE FOR THE TV.
- 2 - PLUG THE MOTOR CABLE TO THE MOTOR CABLE OF THE REMOTE CONTROL BOX.
- 3 - PLUG THE POWER CABLE TO THE TV SET BEFORE INSTALLING THE TV.
- 4 - CONNECT POWER TO EUROSTRIP OF JUNCTION BOX.
- 5 - DETERMINE LOCATION FOR IR SENSOR.
- 6 - THE WIRING PROVIDED MAY BE CHANGED TO MEET LOCAL REQUIREMENTS.

SPDT SECURITY MONITORING SWITCH
 OPTIONAL INSTALLATION
 RATING: 10A, 125/250VAC, 1/2HP
 OR 6A, 30VDC

| | | | | | |
|--|---|--|--|-------------|-----------------|
| THE INFORMATION CONTAINED IN THIS DRAWING IS THE SOLE PROPERTY OF VUTEC CORPORATION AND REPRODUCTION IN PART OR AS A WHOLE WITHOUT THE WRITTEN PERMISSION OF VUTEC CORPORATION IS PROHIBITED | VUTEC CORPORATION | | | | |
| | 11711 W. SAMPLE ROAD. CORAL SPRINGS, FL 33065 | | | | |
| | DRAWN BY | DESCRIPTION | | | DRAWING NO. |
| | 09/17/09 HN | SPECIAL WIRING - 230VAC ART SCREEN - SLIMLINE | | | INSTL-SLIM_230V |
| CHECKED BY | | | | SCALE: 1/10 | REV B |

STEP 6

- 1 - DASHED WIRING BY INSTALLERS. WIRING MUST BE PERFORMED BY QUALIFIED ELECTRICIANS AND COMPLIED WITH NATIONAL AND/OR LOCAL ELECTRICAL CODES AND REGULATIONS.
- 2 - MOTOR: 404S2 PA SONESSE, 120VAC, 36 RPM, 0.95 Amp.
- 3 - SWITCH CONTROL: SPD, 15 Amp @ 120 VAC



LIMIT SWITCH ADJUSTMENTS

- 1 - WITHOUT WEIGHT BAR IN PLACE, RUN MOTOR TO CHECK ART SCREEN TOP AND BOTTOM STOP LOCATIONS, AS THEY MAY HAVE CHANGED DURING SHIPMENT. ADJUST MOTOR LIMIT SWITCHES IF NECESSARY.
- 2 - NOTE EACH FULL TURN OF THE LIMIT SWITCH SOCKET WILL CAUSE THE SCREEN TO TRAVEL APPROXIMATELY 1/2 INCH.
- 3 - TURN EACH SWITCH SOCKET IN THE DESIRED DIRECTION TO EFFECT THE CHANGE.
- 4 - SEND THE SCREEN UP OR DOWN TO SEE THE CHANGE
- 5 - REPEAT STEP 3 AS OFTEN TO SATISFY THE CHANGE REQUIREMENTS.

MOTOR LIMIT SWITCHES

USE 5/32 HEX KEY (SUPPLIED)
OR 1/8 WIDE FLAT BLADE SCREWDRIVER TO TURN

THE INFORMATION
CONTAINED IN THIS
DRAWING IS THE SOLE
PROPERTY OF VUTEC
CORPORATION AND
REPRODUCTION IN PART
OR AS A WHOLE
WITHOUT THE WRITTEN
PERMISSION OF VUTEC
CORPORATION IS
PROHIBITED

VUTEC CORPORATION

11711 W. SAMPLE ROAD. CORAL SPRINGS, FL 33065

DRAWN BY

04/08/09 HN

CHECKED BY

DESCRIPTION

WIRING DIAGRAM - 120VAC
ART SCREEN

DRAWING NO.

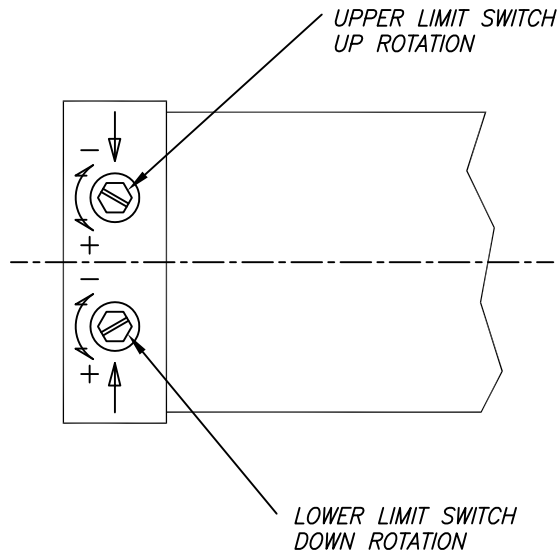
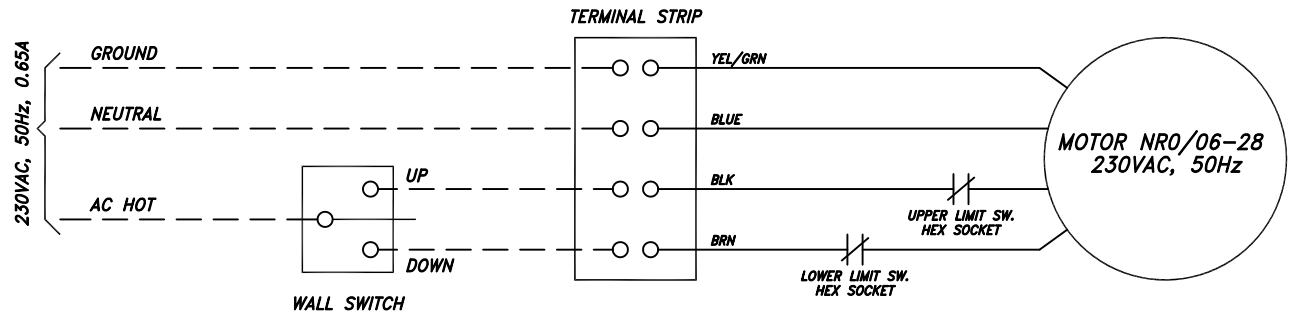
INSTL-SLIM_WD

SCALE: 1/20

REV
B

STEP 6

- 1 - DASHED WIRING BY INSTALLERS. WIRING MUST BE PERFORMED BY QUALIFIED ELECTRICIANS AND COMPLIED WITH NATIONAL AND/OR LOCAL ELECTRICAL CODES AND REGULATIONS.
- 2 - MOTOR: NR0/06-28, 230VAC, 28 RPM, 0.65 Amp.
- 3 - SWITCH CONTROL: SPDT, 15 Amp @ 250 VAC



LIMIT SWITCH ADJUSTMENTS

- 1 - WITHOUT WEIGHT BAR IN PLACE, RUN MOTOR TO CHECK ART SCREEN TOP AND BOTTOM STOP LOCATIONS, AS THEY MAY HAVE CHANGED DURING SHIPMENT. ADJUST MOTOR LIMIT SWITCHES IF NECESSARY.
- 2 - NOTE EACH FULL TURN OF THE LIMIT SWITCH SOCKET WILL CAUSE THE SCREEN TO TRAVEL APPROXIMATELY 1/2 INCH.
- 3 - TURN EACH SWITCH SOCKET IN THE DESIRED DIRECTION TO EFFECT THE CHANGE.
- 4 - SEND THE SCREEN UP OR DOWN TO SEE THE CHANGE
- 5 - REPEAT STEP 3 AS OFTEN TO SATISFY THE CHANGE REQUIREMENTS.

MOTOR LIMIT SWITCHES

USE 5/32 HEX KEY (SUPPLIED)
OR 1/8 WIDE FLAT BLADE SCREWDRIVER TO TURN

THE INFORMATION
CONTAINED IN THIS
DRAWING IS THE SOLE
PROPERTY OF VUTEC
CORPORATION AND
REPRODUCTION IN PART
OR AS A WHOLE
WITHOUT THE WRITTEN
PERMISSION OF VUTEC
CORPORATION IS
PROHIBITED

VUTEC CORPORATION

11711 W. SAMPLE ROAD. CORAL SPRINGS, FL 33065

DRAWN BY

04/08/09 HN

CHECKED BY

DESCRIPTION

WIRING DIAGRAM - 230VAC
ART SCREEN

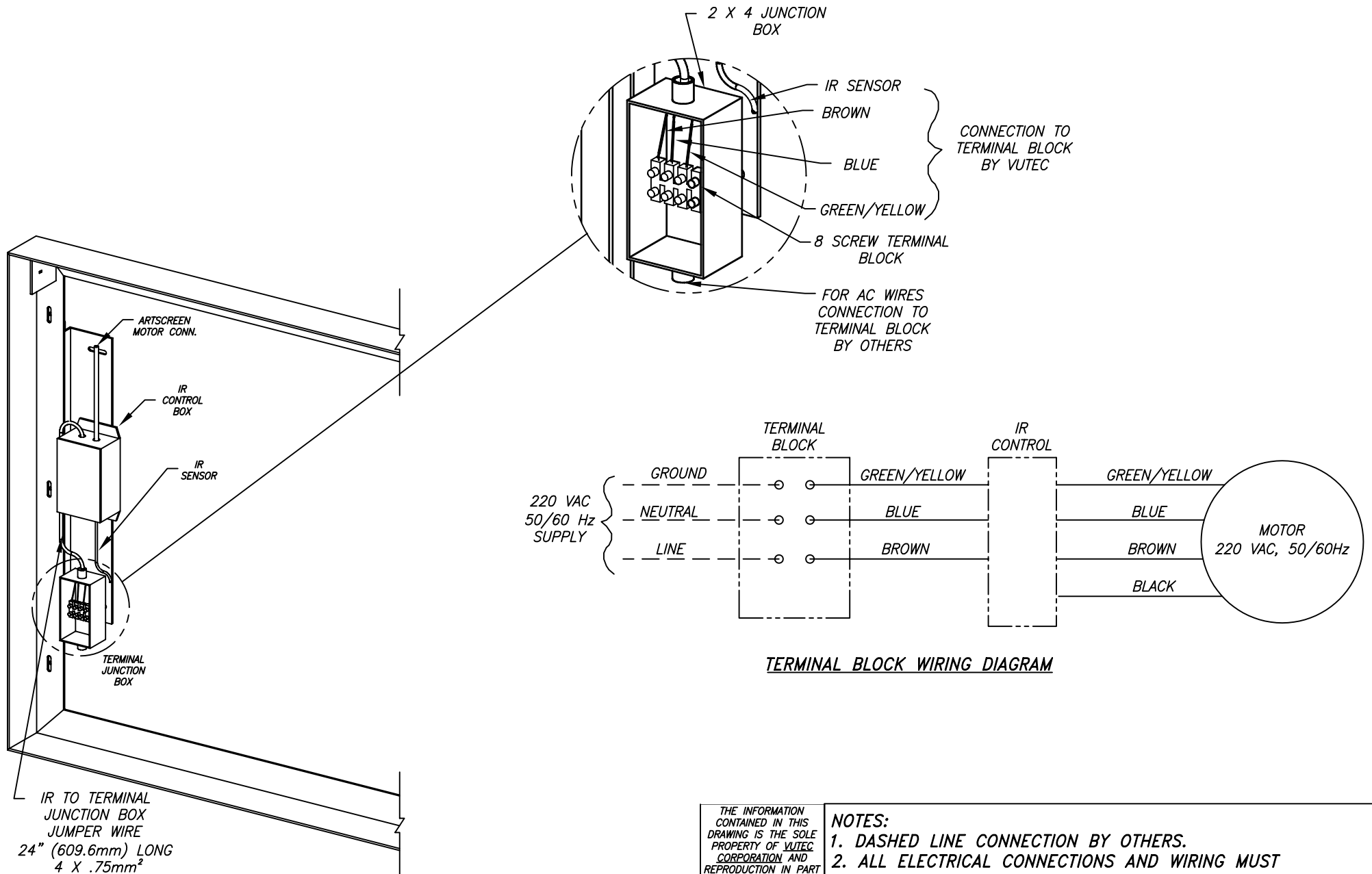
DRAWING NO.

INSTL-SLIM_WD

SCALE: 1/20

REV
B

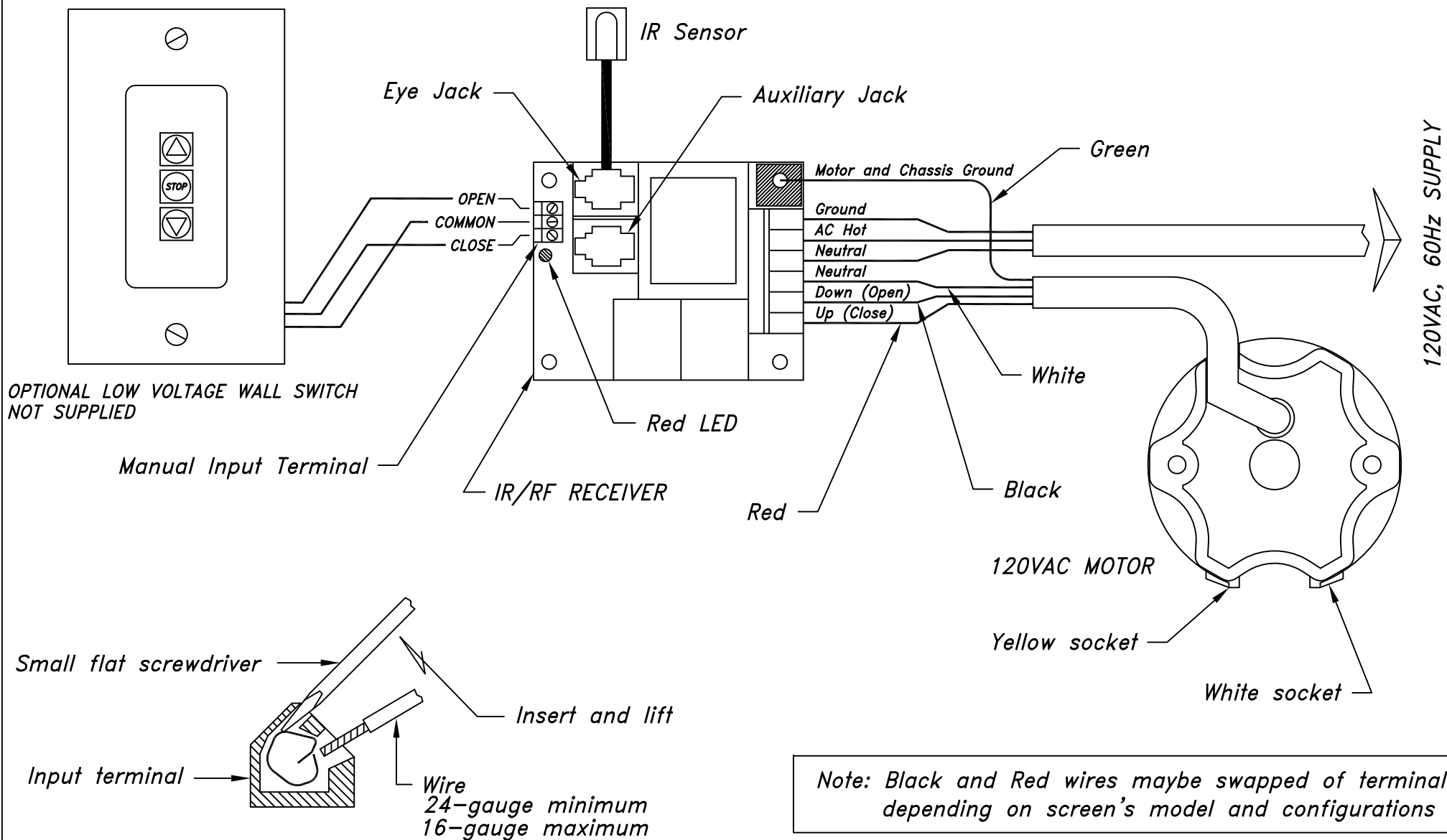
220 VOLT SURFACE MOUNT ARTSCREEN WIRING LAYOUT



THE INFORMATION CONTAINED IN THIS DRAWING IS THE SOLE PROPERTY OF VUTEC CORPORATION AND REPRODUCTION IN PART OR AS A WHOLE WITHOUT THE WRITTEN PERMISSION OF VUTEC CORPORATION IS PROHIBITED

NOTES:

1. DASHED LINE CONNECTION BY OTHERS.
2. ALL ELECTRICAL CONNECTIONS AND WIRING MUST CONFORM WITH LOCAL AND STANDARD REGULATIONS.
3. RECOMENDED WIRE 1mm² MINIMUM



THE INFORMATION
CONTAINED IN THIS
DRAWING IS THE SOLE
PROPERTY OF VUTEC
CORPORATION AND
REPRODUCTION IN PART
OR AS A WHOLE
WITHOUT THE WRITTEN
PERMISSION OF VUTEC
CORPORATION IS
PROHIBITED

VUTEC CORPORATION

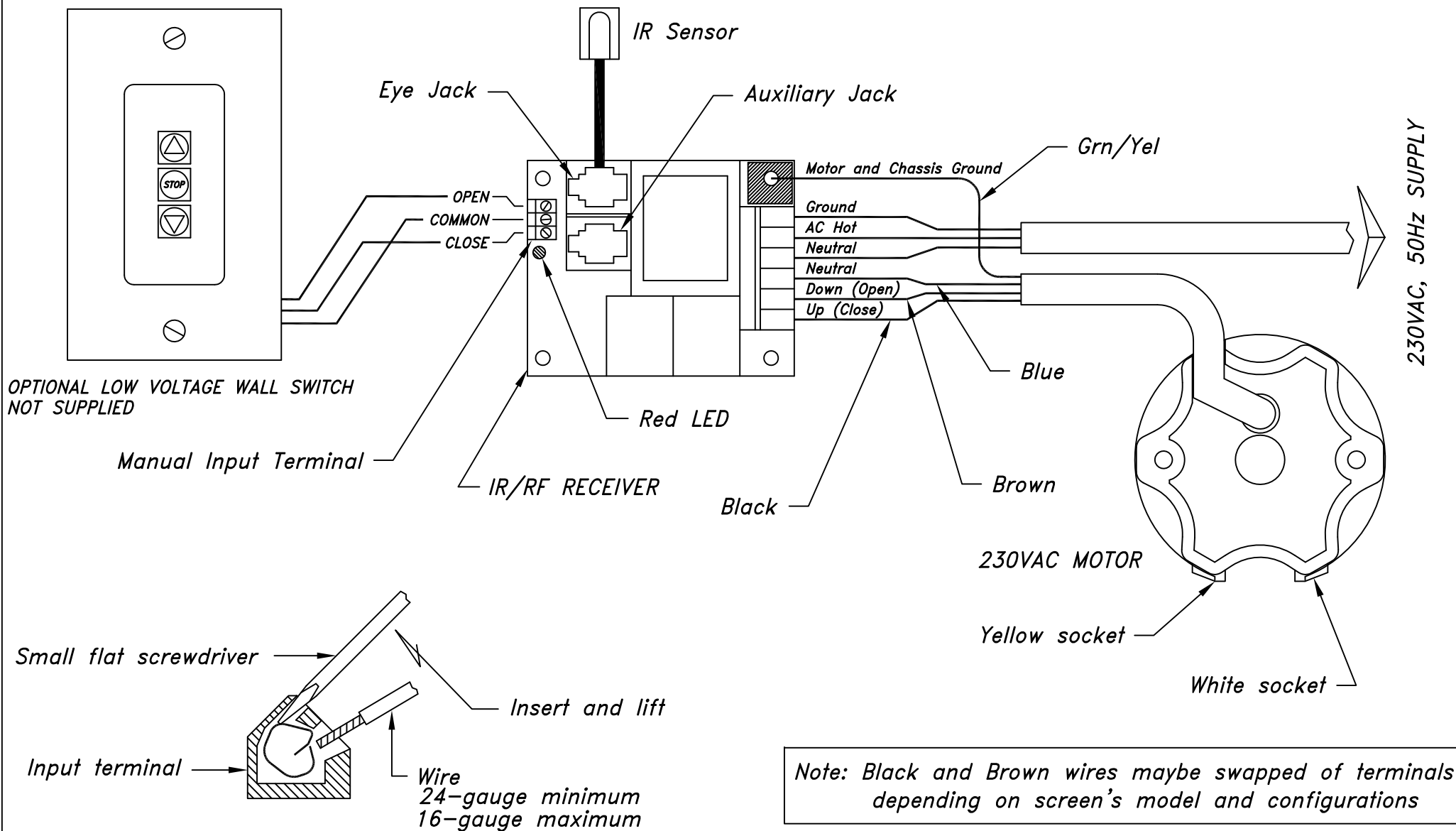
11711 W. SAMPLE ROAD, CORAL SPRINGS, FL 33064

DRAWN BY
04/24/12 PCB
CHECKED BY

DESCRIPTION
IR REMOTE CONTROL
ARTSCREEN - 120VAC

DRAWING NO.
IR-R2AUH_120

SCALE: NONE REV A



THE INFORMATION
CONTAINED IN THIS
DRAWING IS THE SOLE
PROPERTY OF VUTEC
CORPORATION AND
REPRODUCTION IN PART
OR AS A WHOLE
WITHOUT THE WRITTEN
PERMISSION OF VUTEC
CORPORATION IS
PROHIBITED

VUTEC CORPORATION

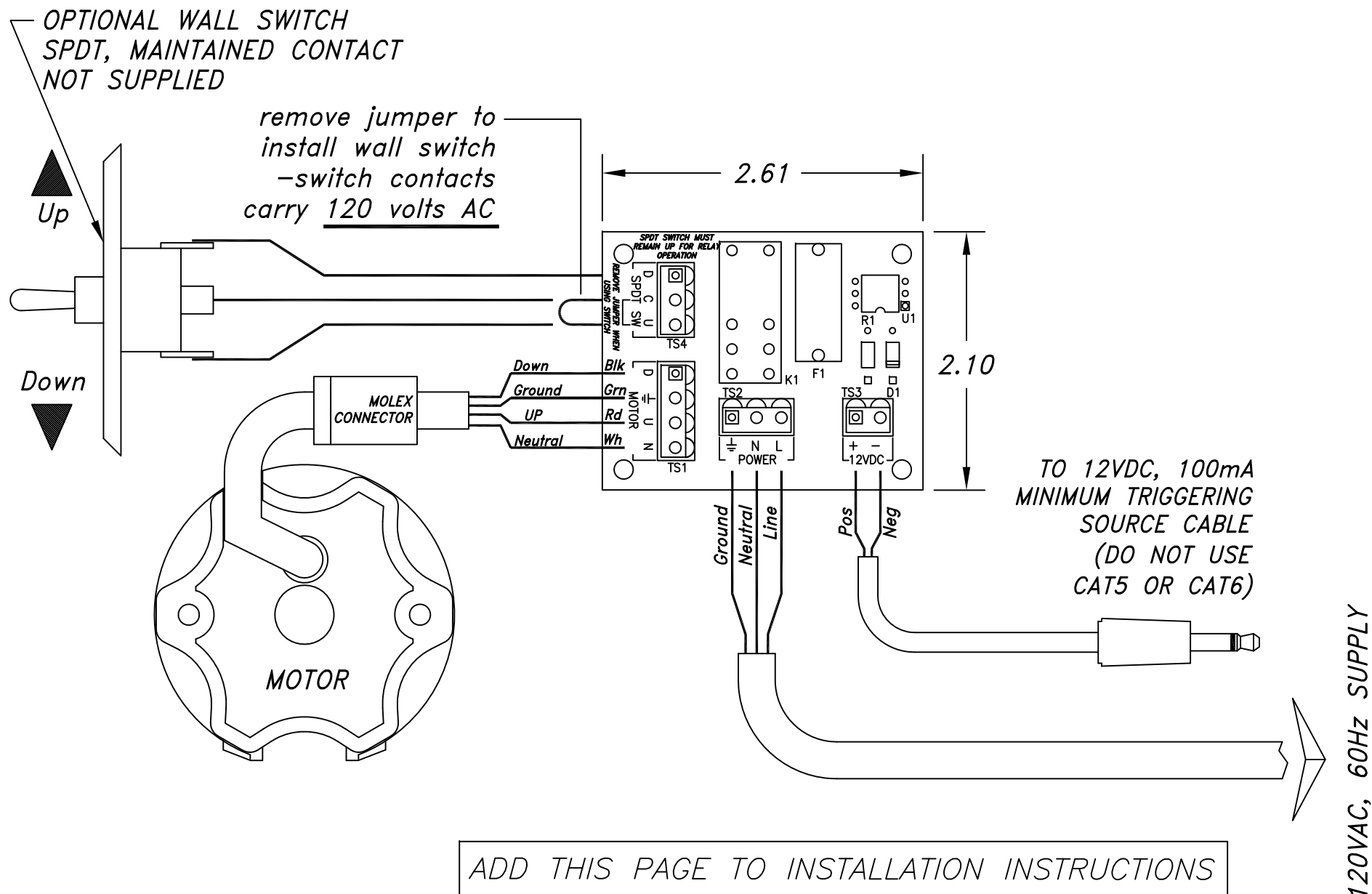
11711 W. SAMPLE ROAD, CORAL SPRINGS, FL 33064

DRAWN BY
04/24/12 PCB
CHECKED BY

DESCRIPTION
IR REMOTE CONTROL
ARTSCREEN - 230VAC

DRAWING NO.
IR-R2AUH_230

SCALE: NONE REV A



NOTES:

- 1 -WIRINGS SHOWN ARE TO BE CONNECTED BY INSTALLERS.
- 2 -WIRINGS MUST CONFORM TO LOCAL AND/OR NATIONAL ELECTRICAL CODES AND REGULATIONS.
- 3 -WIRINGS MUST BE A MINIMUM OF 18 AWG.

THE INFORMATION
CONTAINED IN THIS
DRAWING IS THE SOLE
PROPERTY OF VUTEC
CORPORATION AND
REPRODUCTION IN PART
OR AS A WHOLE
WITHOUT THE WRITTEN
PERMISSION OF VUTEC
CORPORATION IS
PROHIBITED

VUTEC CORPORATION

11711 W. SAMPLE ROAD. CORAL SPRINGS, FL 33065

DRAWN BY
10/25/16 TM
CHECKED BY

DESCRIPTION
TRIGGER OPTION
UNIVERSAL TRIGGER SCHEMATIC
ART SCREEN - SLIMLINE

DRAWING NO.
TRIGGER RELAY ELEC
SCALE: NONE
REV A