

SURFACED MOUNT – STEP 1:

- 1 – DETERMINE LOCATION FOR TV. TV IS CENTERED IN BOX WHEN DONE.
- 2 – DETERMINE PROPER MOUNTING SCREWS FOR INSTALLATION IF SUPPLIED SCREWS ARE NOT SUITABLE.
- 3 – DETERMINE ELECTRICAL AND A/V CABLES REQUIREMENTS.
- 4 – INSTALL MOUNTING ANGLE. BE SURE IT IS LEVEL.
- 5 – INSTALL 1" SQUARE RUBBER SPACERS TO MOUNTING HOLES OF BOX.
- 6 – PLACE BOX ONTO ANGLE. MOVE SIDE TO SIDE TO DESIRED LOCATION. INSTALL MOUNTING SCREWS TO SECURE BOX TO LOCATION.
- 7 – ADD A COMPLETE SET VELCRO STRIPS (HOOK & LOOP) TO EACH VELVET COVER.
- 8 – REMOVE LINER TO EXPOSE ADHESIVE BACK ON VELCRO STRIPS. CAREFULLY APPLY COVER TO SIDE OF BOX WITH FRONT EDGES FLUSHED.
- 9 – PLACE THE TV SUPPORTS AS FAR APART AS POSSIBLE. INSTALL CLAMP BAR TO HOLD THEM IN PLACED.

NOTE: IT IS THE RESPONSIBILITY OF THE INSTALLER TO DETERMINE THE APPROPRIATE WALL ANCHORS REQUIRED TO SUPPORT THE COMPLETE UNIT. IF THE SUPPLIED HARDWARE IS INSUFFICIENT TO SUPPORT THE UNIT WEIGHT, MORE HEAVY DUTY HARDWARE SHOULD BE USED.

THE INFORMATION
CONTAINED IN THIS
DRAWING IS THE SOLE
PROPERTY OF VUTEC
CORPORATION AND
REPRODUCTION IN PART
OR AS A WHOLE
WITHOUT THE WRITTEN
PERMISSION OF VUTEC
CORPORATION IS
PROHIBITED

VUTEC CORPORATION

11711 W. SAMPLE ROAD. CORAL SPRINGS, FL 33065

DRAWN BY

12/11/17 TM

CHECKED BY

DESCRIPTION

SURFACE MOUNTED
ADJUSTABLE SUPPORT
ART SCREEN – SLIMLINE

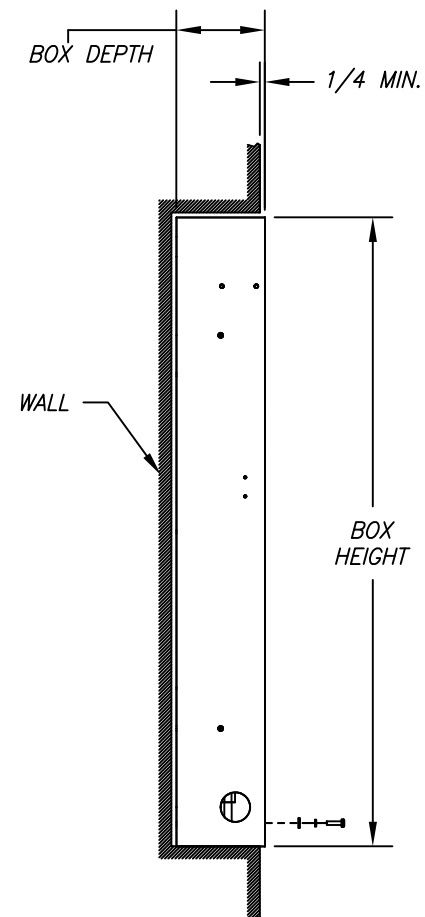
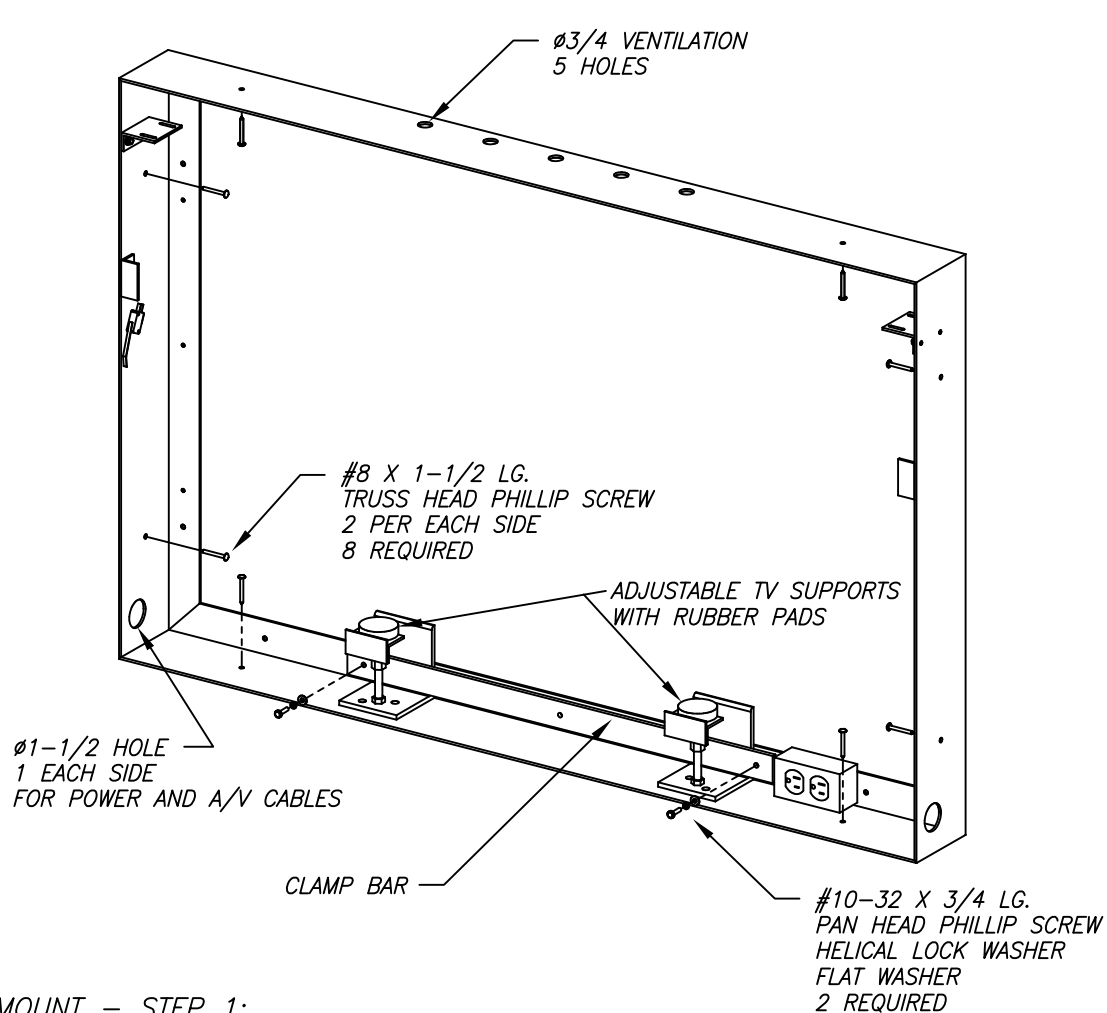
DRAWING NO.

INSTL-SLIMADJ_BOX

SCALE: 1/10

REV

B



RECESSED MOUNT – STEP 1:

- 1 – PLACE THE BOX INSIDE CUT OUT HOLE.
- 2 – DETERMINE PROPER MOUNTING SCREWS FOR INSTALLATION IF SUPPLIED SCREWS ARE NOT SUITABLE.
- 3 – DETERMINE ELECTRICAL AND A/V CABLES REQUIREMENTS.
- 4 – INSTALL BOX AND BE SURE IT IS LEVEL, PLUMB AND MINIMUM OF 1/4 PROTRUDING WALL FACE. ADD SHIMS (NOT SUPPLIED) AS NECESSARY.
CAUTION: BOX MUST REMAIN SQUARE IN ITS ORIGINAL SHAPE.
- 5 – PLACE THE TV SUPPORTS AS FAR APART AS POSSIBLE. INSTALL CLAMP BAR TO HOLD THEM IN PLACED.

THE INFORMATION CONTAINED IN THIS DRAWING IS THE SOLE PROPERTY OF VUTEC CORPORATION AND REPRODUCTION IN PART OR AS A WHOLE WITHOUT THE WRITTEN PERMISSION OF VUTEC CORPORATION IS PROHIBITED

VUTEC CORPORATION

11711 W. SAMPLE ROAD. CORAL SPRINGS, FL 33065

DRAWN BY

12/11/17 TM

CHECKED BY

DESCRIPTION

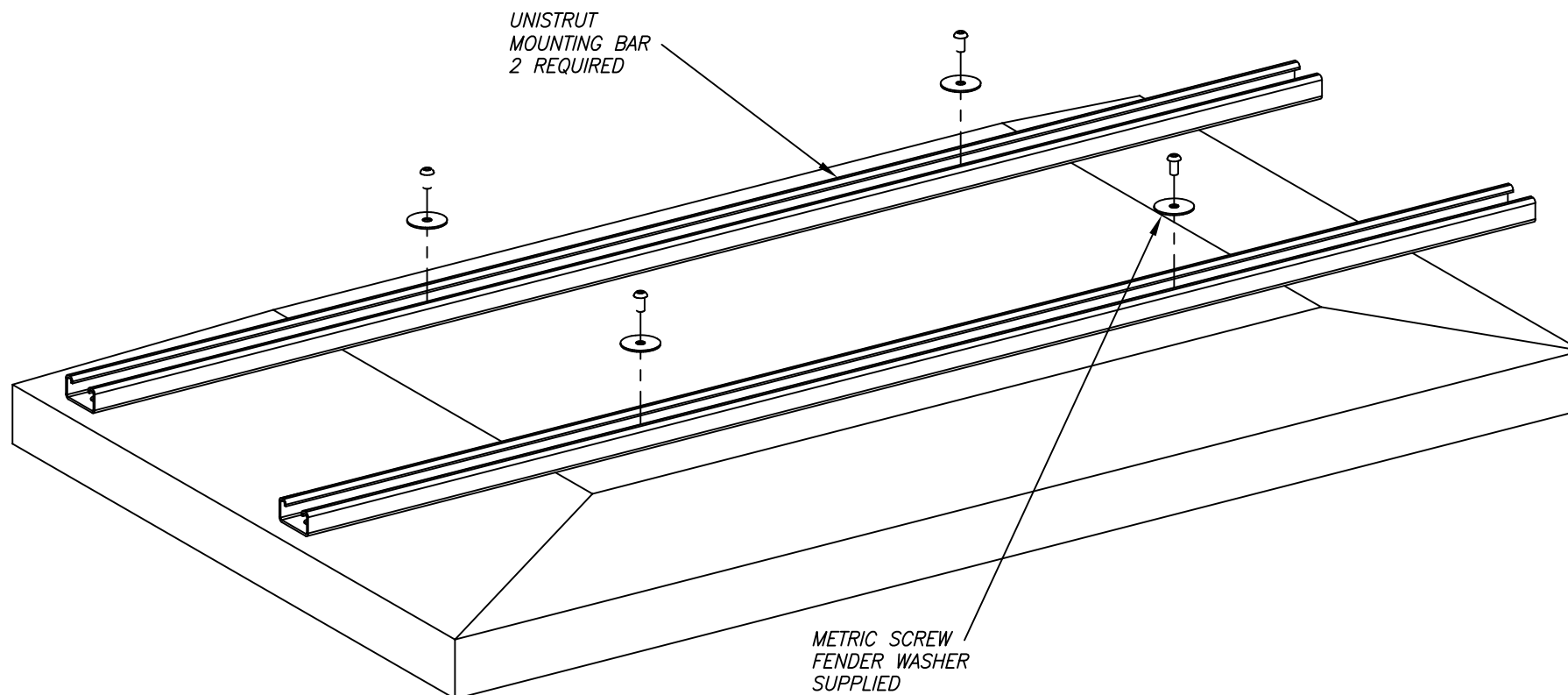
RECESS MOUNTED
ADJUSTABLE SUPPORT
ART SCREEN – SLIMLINE

DRAWING NO.

INSTL-SLIMADJ_BOX

SCALE: 1/10

REV B



STEP 2

- 1 - ATTACH TV TIED BARS TO BACK OF TV. DEPENDING ON TV DEPTH; IT MAY NEED TO ADD SOME FENDER WASHERS OR WHITE PLASTIC SPACER BETWEEN THE BARS AND TV TO INCREASE THE REQUIRED DEPTH FOR TV PLACEMENT.
- 2 - PLACE TV IN THE METAL FRAME. BOTTOM OF TV SHOULD REST ON THE RUBBER PADS.
- 3 - ATTACH ALL REQUIRED AV CABLES AND POWER CABLE TO TV.
- 4 - THE TV TIED BARS ARE FLAT ON THE REAR PANELS WAITING TO BE HELD BY TWO VERTICAL CLAMP BARS.
NOTE: IF TV HOLE PATTERN CAUSED ONLY ONE TIED BAR TO BE CAPTURED BY THE VERTICAL CLAMP BARS; IT IS NOT A CONCERN BECAUSE THE TV TIED BAR IS SIMPLY TO PREVENT TV FROM TIPPING OVER.
- 5 - INSTALL THE VERTICAL CLAMP BARS TO TRAP THE TV TO ITS LOCATION. BE SURE TV IS CENTERED SIDE TO SIDE.
- 6 - DEPENDING ON WHERE THE TV TIED BARS ARE LOCATED; ANY COMBINATION OF 2 MOUNTING SCREWS FOR EACH CLAMP BAR ARE ADEQUATE TO HOLD THE TV.

THE INFORMATION
CONTAINED IN THIS
DRAWING IS THE SOLE
PROPERTY OF VUTEC
CORPORATION AND
REPRODUCTION IN PART
OR AS A WHOLE
WITHOUT THE WRITTEN
PERMISSION OF VUTEC
CORPORATION IS
PROHIBITED

VUTEC CORPORATION

11711 W. SAMPLE ROAD. CORAL SPRINGS, FL 33065

DRAWN BY

05/06/2015 TM

CHECKED BY

DESCRIPTION

MOUNTING BAR
ADJUSTABLE SUPPORT
ART SCREEN - SLIMLINE

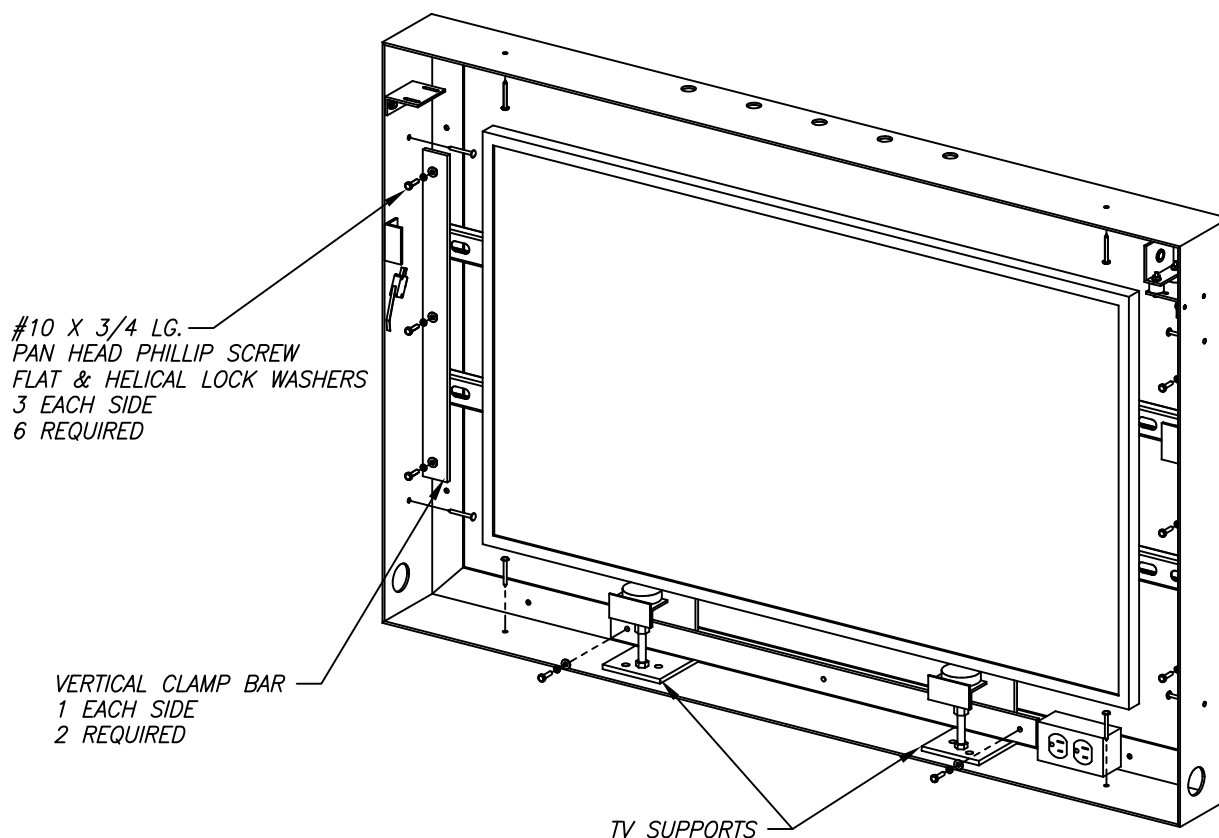
DRAWING NO.

INSTL-SLIMADJ_MBAR

SCALE: 1/8

REV

A



STEP 3:

- 1 - CONNECT ALL THE REQUIRED POWER AND A/V CABLES TO TV.
DUE TO BOX DEPTH, VUTEC SUPPLIED REPLACEMENT POWER CABLE FOR TV
WITH LOW HEAD PROFILE. USE THIS POWER CABLE FOR THE TV.
- 2 - PLACE TV ON SUPPORT PADS. TV SHOULD BE STRAIGHT UP WITH THE TWO
MOUNTING BARS BEHIND THE TV TOUCH FLAT TO TV BOX.
- 3 - INSTALL THE VERTICAL CLAMP BARS TO HOLD TV IN PLACE. A MINIMUM OF ANY TWO
SCREW COMBINATION IS REQUIRED. BE SURE TV IS CENTERED SIDE TO SIDE.
TIGHTEN THE SCREWS.

THE INFORMATION
CONTAINED IN THIS
DRAWING IS THE SOLE
PROPERTY OF VUTEC
CORPORATION AND
REPRODUCTION IN PART
OR AS A WHOLE
WITHOUT THE WRITTEN
PERMISSION OF VUTEC
CORPORATION IS
PROHIBITED

VUTEC CORPORATION

11711 W. SAMPLE ROAD. CORAL SPRINGS, FL 33065

DRAWN BY

05/06/15 TM

CHECKED BY

DESCRIPTION

TV PLACEMENT
ADJUSTABLE SUPPORT
ART SCREEN - SLIMLINE

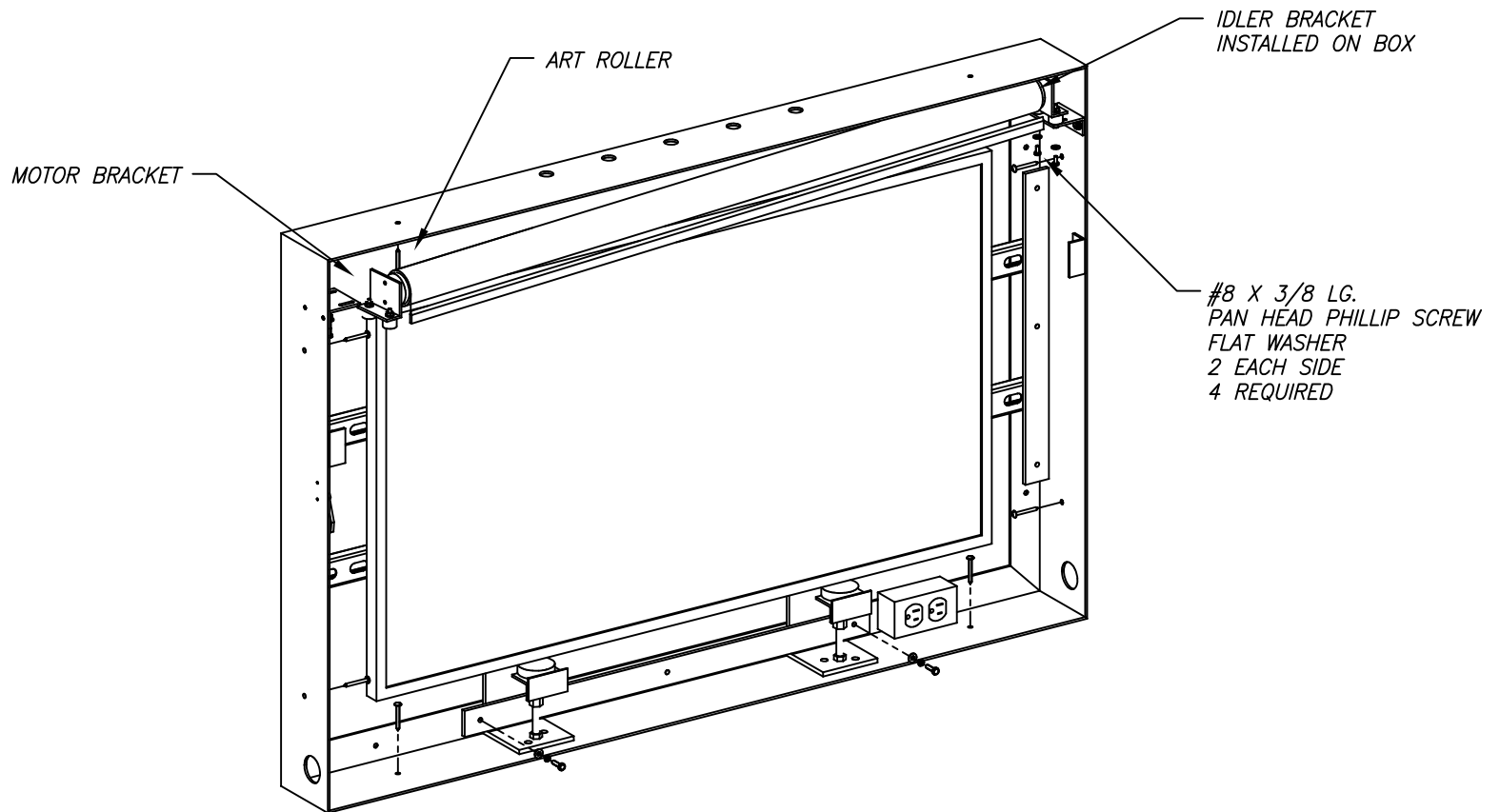
DRAWING NO.

INSTL-SLIMADJ_TV IN

SCALE: 1/10

REV

B



STEP 4:

- 1 - INSTALL ART ROLLER ASSEMBLY TO BOX. THE IDLER SHAFT OF THE ROLLER TO BE ENGAGED WITH THE IDLER BRACKET FIRST THEN ANGLE IN AS SHOWN.
- 2 - BRING THE MOTOR BRACKET TO ITS LOCATION.
- 3 - INSTALL THE SCREWS TO HOLD ITS IN LOCATION. DO NOT OVER TIGHTEN THE SCREWS.

THE INFORMATION
CONTAINED IN THIS
DRAWING IS THE SOLE
PROPERTY OF VUTEC
CORPORATION AND
REPRODUCTION IN PART
OR AS A WHOLE
WITHOUT THE WRITTEN
PERMISSION OF VUTEC
CORPORATION IS
PROHIBITED

VUTEC CORPORATION

11711 W. SAMPLE ROAD. CORAL SPRINGS, FL 33065

DRAWN BY

05/06/15 TM

CHECKED BY

DESCRIPTION

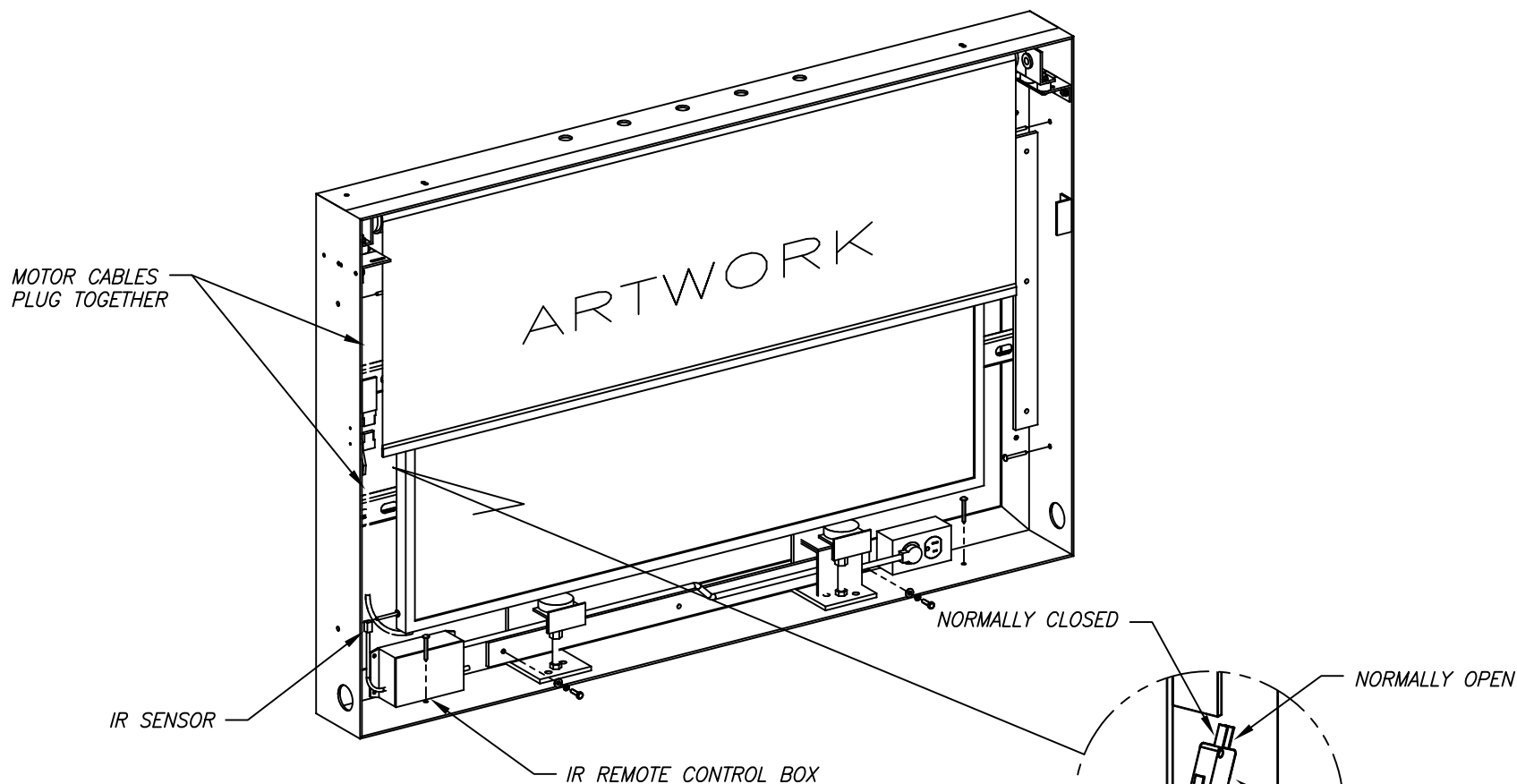
ART ROLLER INSTALLATION
ADJUSTABLE SUPPORT
ART SCREEN - SLIMLINE

DRAWING NO.

INSTL-SLIMADJ_TV IN

SCALE: 1/10

REV
B



STEP 5:

- 1 - INSTALL THE IR REMOTE CONTROL BOX.
- 2 - DETERMINE LOCATION FOR IR SENSOR CAN BE SEEN BY IR TRANSMITTER.
- 3 - REMOVE PROTECTIVE WRAPPING FOR ART ROLLER.
*** DO NOT INSTALL THE WEIGHT BAR AT THIS TIME ***
- 4 - USING THE TRANSMITTER, RUN THE MOTOR AND CHECK THE LIMIT SWITCHES,
AS THEY MAY HAVE CHANGED DURING SHIPMENT.
- 5 - ADJUST THE LIMIT SWITCHES IF NECESSARY.
- 6 - USING THE TRANSMITTER, SEND THE SCREEN DOWN HALF WAY THEN STOP.
SIMPLY PRESS EITHER OPEN-1 OR CLOSE-1 BUTTON TO STOP THE MOTOR.
- 7 - LOCATE AND INSERT THE WEIGHT BAR FOR THE ART SCREEN.
- 8 - SEND THE ART SCREEN UP.
- 9 - INSTALL THE PICTURE FRAME PER INSTRUCTION SHEET ATTACHED.
- 10 - INSTALLATION IS NOW COMPLETED.

OPTIONAL:

THE SPDT SECURITY MONITORING SWITCH MAY BE CONNECTED TO A SECURITY SYSTEM. A SIGNAL IS SENT WHEN THE PICTURE FRAME IS REMOVED.

THE INFORMATION
CONTAINED IN THIS
DRAWING IS THE SOLE
PROPERTY OF VUTEC
CORPORATION AND
REPRODUCTION IN PART
OR AS A WHOLE
WITHOUT THE WRITTEN
PERMISSION OF VUTEC
CORPORATION IS
PROHIBITED

VUTEC CORPORATION

11711 W. SAMPLE ROAD. CORAL SPRINGS, FL 33065

DRAWN BY

05/06/15 TM

CHECKED BY

DESCRIPTION

IR REMOTE CONTROL
ADJUSTABLE SUPPORT
ART SCREEN - SLIMLINE

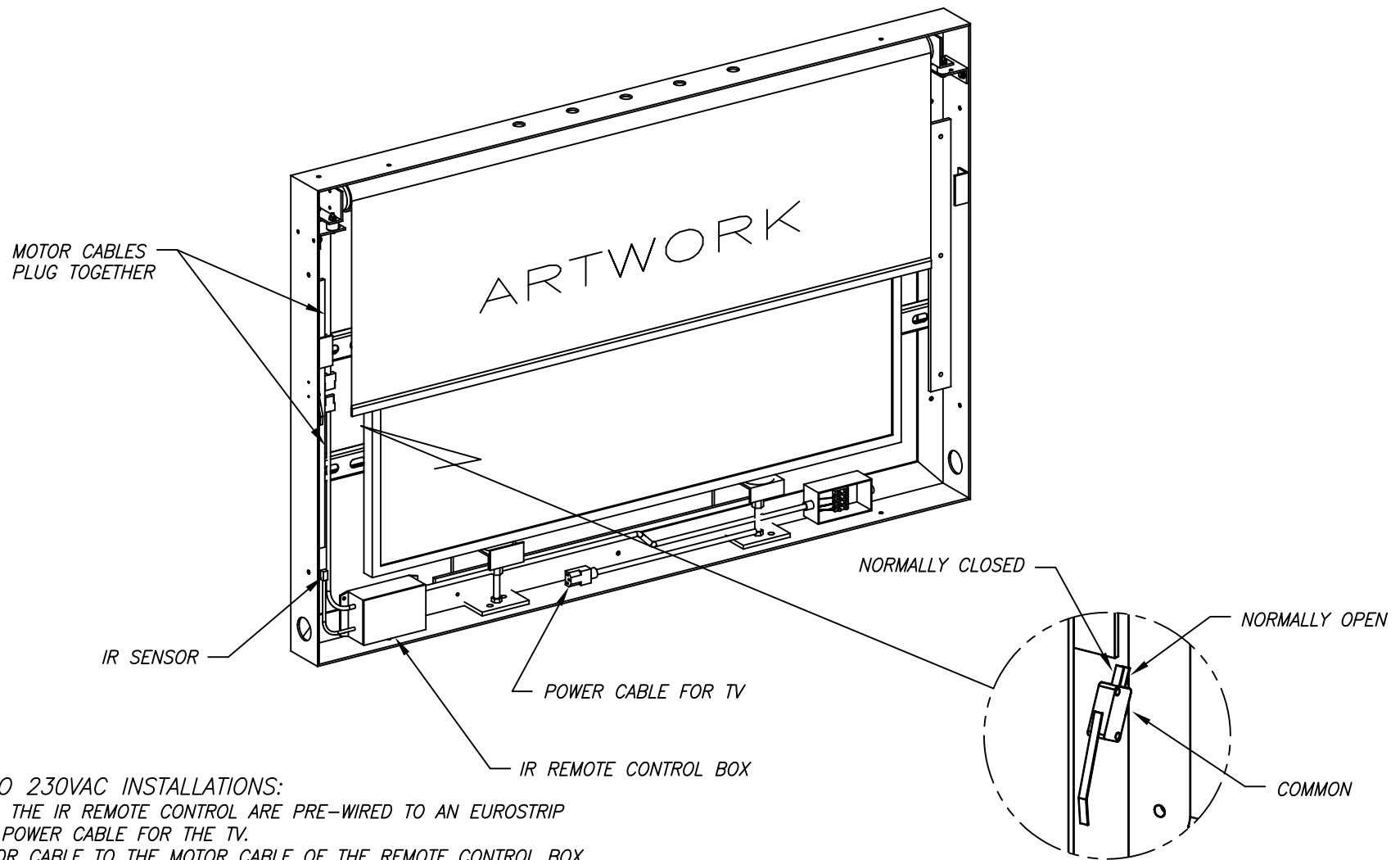
DRAWING NO.

INSTL-SLIMADJ_TVIN

SCALE: 1/10

REV

B



SPDT SECURITY MONITORING SWITCH
 OPTIONAL INSTALLATION
 RATING: 10A, 125/250VAC, 1/2HP
 OR 6A, 30VDC

STEP 5b APPLY TO 230VAC INSTALLATIONS:

- 1 - THE WIRES FOR THE IR REMOTE CONTROL ARE PRE-WIRED TO AN EUROSTRIP INCLUDING THE POWER CABLE FOR THE TV.
- 2 - PLUG THE MOTOR CABLE TO THE MOTOR CABLE OF THE REMOTE CONTROL BOX.
- 3 - PLUG THE POWER CABLE TO THE TV SET BEFORE INSTALLING THE TV.
- 4 - CONNECT POWER TO EUROSTRIP OF JUNCTION BOX.
- 5 - DETERMINE LOCATION FOR IR SENSOR.
- 6 - THE WIRINGS PROVIDED MAY BE CHANGED TO MEET LOCAL REQUIRMENTS.

THE INFORMATION
 CONTAINED IN THIS
 DRAWING IS THE SOLE
 PROPERTY OF VUTEC
 CORPORATION AND
 REPRODUCTION IN PART
 OR AS A WHOLE
 WITHOUT THE WRITTEN
 PERMISSION OF VUTEC
 CORPORATION IS
 PROHIBITED

DRAWN BY
 09/17/09 HN
 CHECKED BY

VUTEC CORPORATION

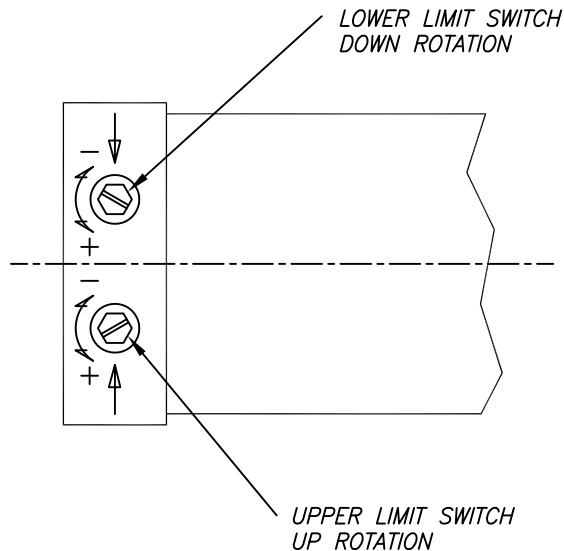
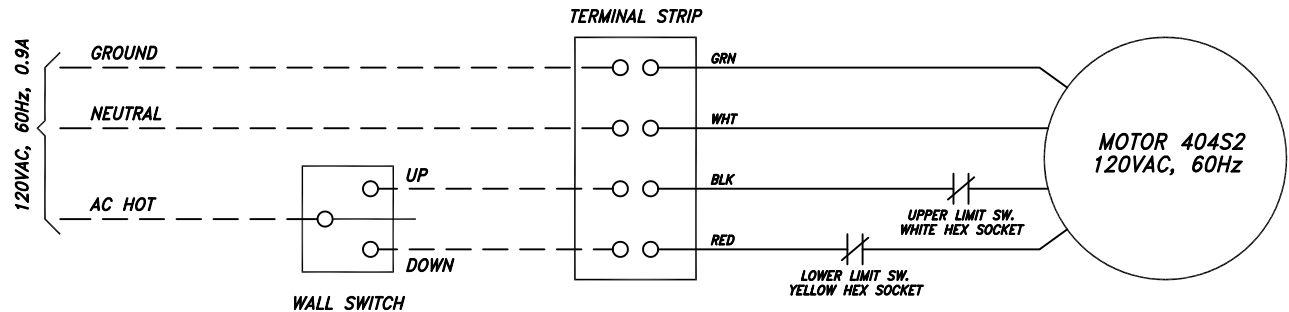
11711 W. SAMPLE ROAD. CORAL SPRINGS, FL 33065

DESCRIPTION
**SPECIAL WIRINGS - 230VAC
 ADJUSTABLE SUPPORTS
 ART SCREEN - SLIMLINE**

DRAWING NO.
INSTL-SLIMADJ_230V
 SCALE: 1/10
 REV **B**

STEP 6

- 1 - DASHED WIRING BY INSTALLERS. WIRING MUST BE PERFORMED BY QUALIFIED ELECTRICIANS AND COMPLIED WITH NATIONAL AND/OR LOCAL ELECTRICAL CODES AND REGULATIONS.
- 2 - MOTOR: 404S2 PA SONESSE, 120VAC, 36 RPM, 0.95 Amp.
- 3 - SWITCH CONTROL: SPDT, 15 Amp @ 120 VAC



LIMIT SWITCH ADJUSTMENTS

- 1 - WITHOUT WEIGHT BAR IN PLACE, RUN MOTOR TO CHECK ART SCREEN TOP AND BOTTOM STOP LOCATIONS, AS THEY MAY HAVE CHANGED DURING SHIPMENT. ADJUST MOTOR LIMIT SWITCHES IF NECESSARY.
- 2 - NOTE EACH FULL TURN OF THE LIMIT SWITCH SOCKET WILL CAUSE THE SCREEN TO TRAVEL APPROXIMATELY 1/2 INCH.
- 3 - TURN EACH SWITCH SOCKET IN THE DESIRED DIRECTION TO EFFECT THE CHANGE.
- 4 - SEND THE SCREEN UP OR DOWN TO SEE THE CHANGE
- 5 - REPEAT STEP 3 AS OFTEN TO SATISFY THE CHANGE REQUIREMENTS.

MOTOR LIMIT SWITCHES

USE 5/32 HEX KEY (SUPPLIED)
OR 1/8 WIDE FLAT BLADE SCREWDRIVER TO TURN

THE INFORMATION
CONTAINED IN THIS
DRAWING IS THE SOLE
PROPERTY OF VUTEC
CORPORATION AND
REPRODUCTION IN PART
OR AS A WHOLE
WITHOUT THE WRITTEN
PERMISSION OF VUTEC
CORPORATION IS
PROHIBITED

VUTEC CORPORATION

11711 W. SAMPLE ROAD. CORAL SPRINGS, FL 33065

DRAWN BY
04/08/09 HN
CHECKED BY

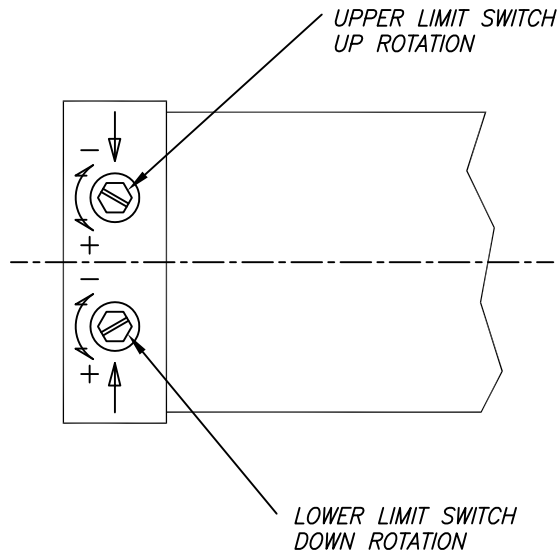
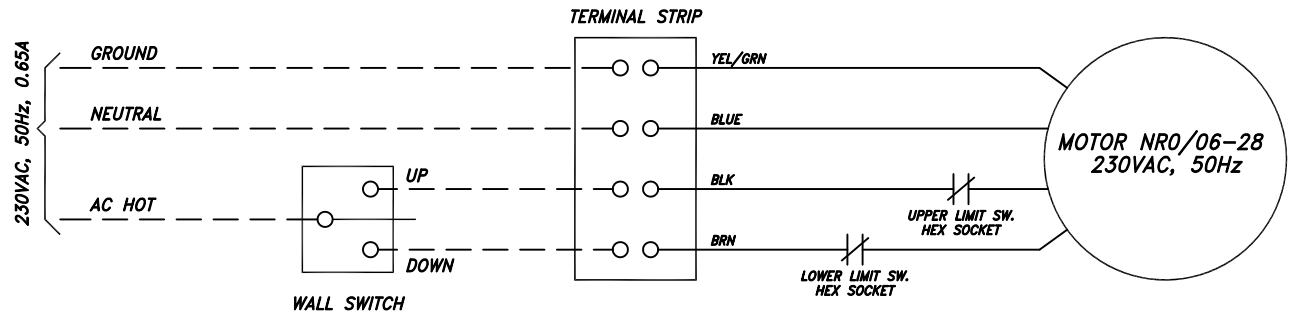
DESCRIPTION
WIRING DIAGRAM - 120VAC
ART SCREEN

DRAWING NO.
INSTL-SLIM_WD

SCALE: 1/20 REV B

STEP 6

- 1 - DASHED WIRING BY INSTALLERS. WIRING MUST BE PERFORMED BY QUALIFIED ELECTRICIANS AND COMPLIED WITH NATIONAL AND/OR LOCAL ELECTRICAL CODES AND REGULATIONS.
- 2 - MOTOR: NR0/06-28, 230VAC, 28 RPM, 0.65 Amp.
- 3 - SWITCH CONTROL: SPDT, 15 Amp @ 250 VAC



LIMIT SWITCH ADJUSTMENTS

- 1 - WITHOUT WEIGHT BAR IN PLACE, RUN MOTOR TO CHECK ART SCREEN TOP AND BOTTOM STOP LOCATIONS, AS THEY MAY HAVE CHANGED DURING SHIPMENT. ADJUST MOTOR LIMIT SWITCHES IF NECESSARY.
- 2 - NOTE EACH FULL TURN OF THE LIMIT SWITCH SOCKET WILL CAUSE THE SCREEN TO TRAVEL APPROXIMATELY 1/2 INCH.
- 3 - TURN EACH SWITCH SOCKET IN THE DESIRED DIRECTION TO EFFECT THE CHANGE.
- 4 - SEND THE SCREEN UP OR DOWN TO SEE THE CHANGE
- 5 - REPEAT STEP 3 AS OFTEN TO SATISFY THE CHANGE REQUIREMENTS.

MOTOR LIMIT SWITCHES

USE 5/32 HEX KEY (SUPPLIED)
OR 1/8 WIDE FLAT BLADE SCREWDRIVER TO TURN

THE INFORMATION
CONTAINED IN THIS
DRAWING IS THE SOLE
PROPERTY OF VUTEC
CORPORATION AND
REPRODUCTION IN PART
OR AS A WHOLE
WITHOUT THE WRITTEN
PERMISSION OF VUTEC
CORPORATION IS
PROHIBITED

VUTEC CORPORATION

11711 W. SAMPLE ROAD. CORAL SPRINGS, FL 33065

DRAWN BY

04/08/09 HN

CHECKED BY

DESCRIPTION

WIRING DIAGRAM - 230VAC
ART SCREEN

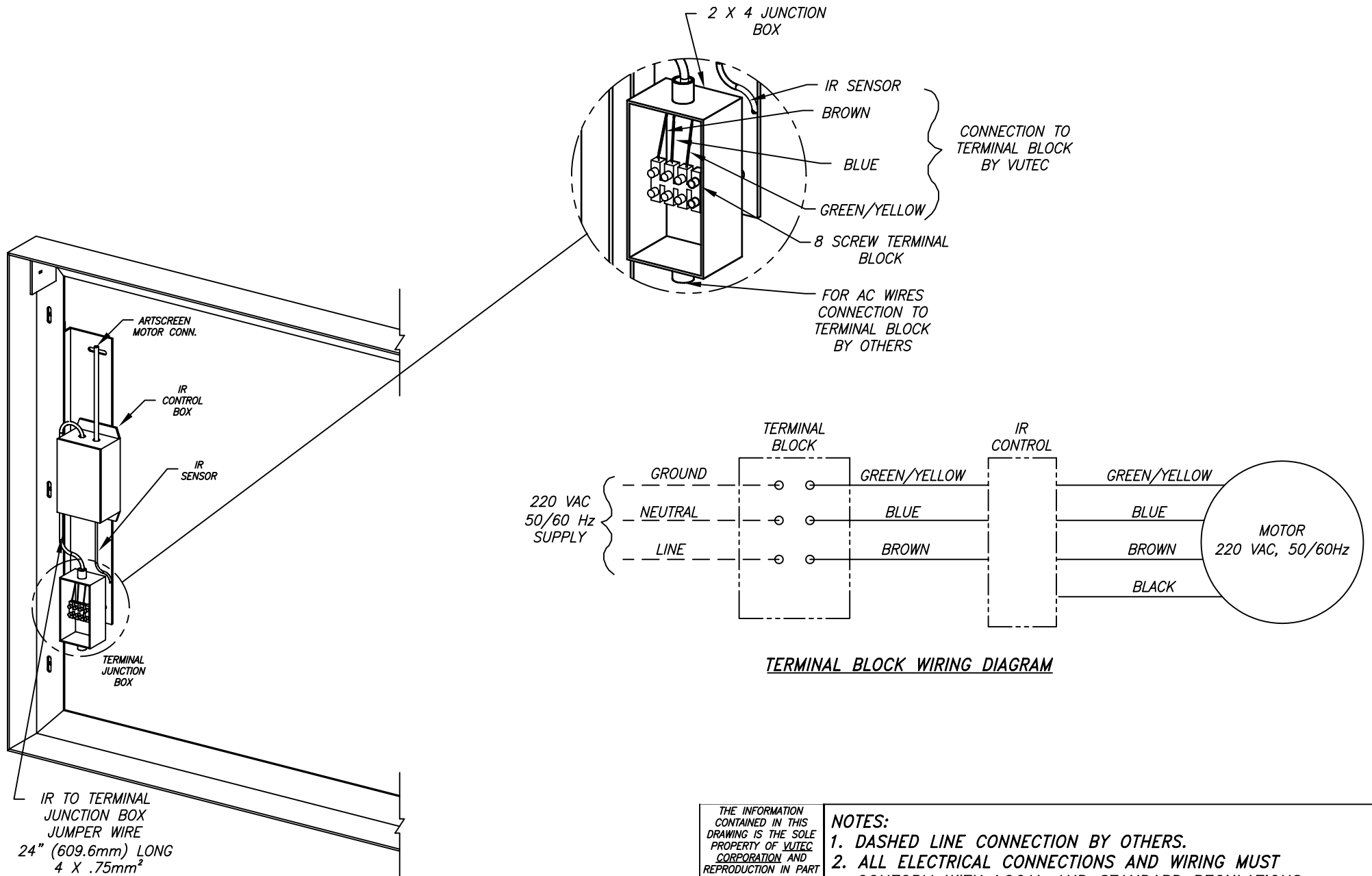
DRAWING NO.

INSTL-SLIM_WD

SCALE: 1/20

REV
B

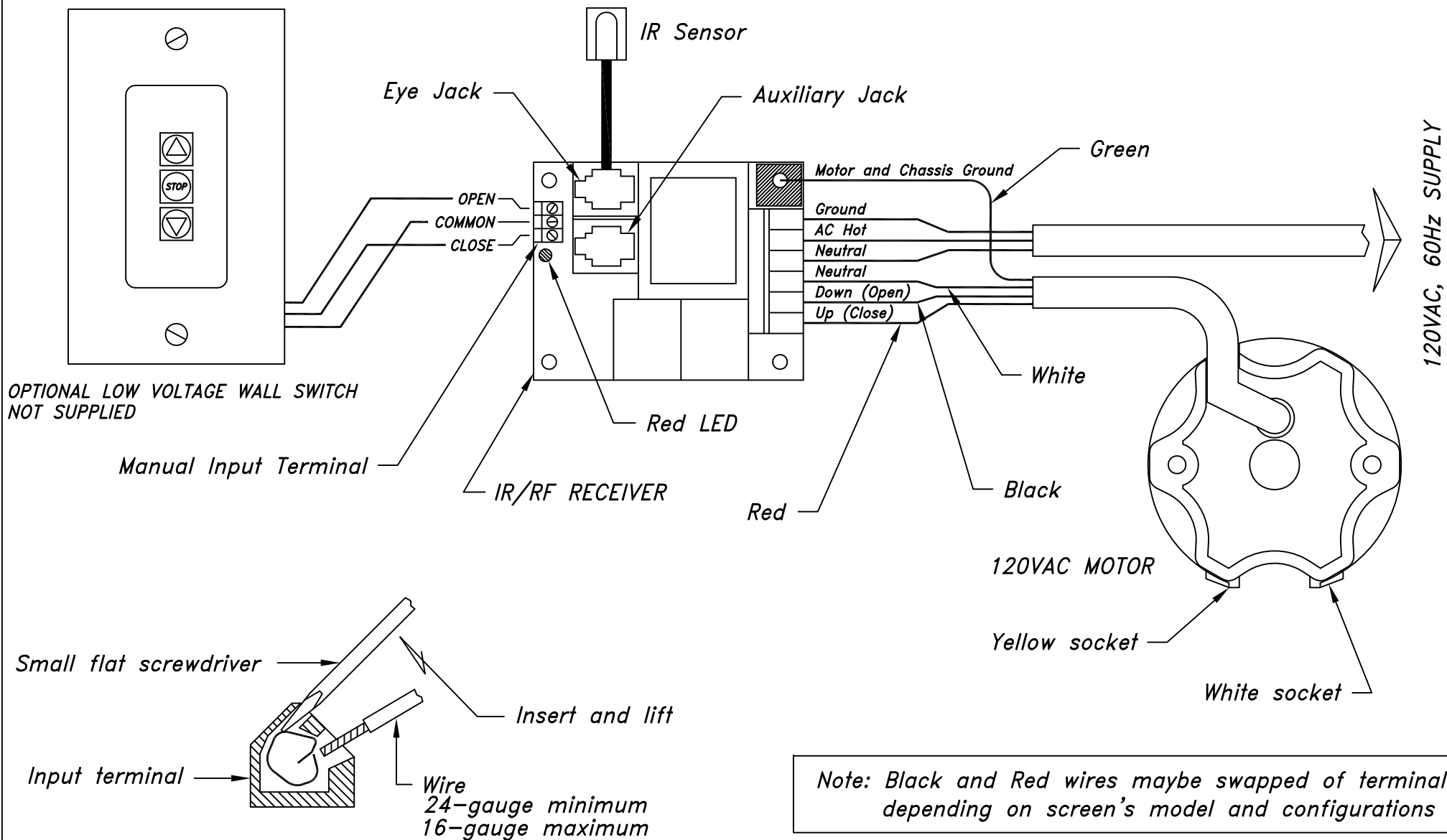
220 VOLT SURFACE MOUNT ARTSCREEN WIRING LAYOUT



THE INFORMATION CONTAINED IN THIS DRAWING IS THE SOLE PROPERTY OF VUTEC CORPORATION AND REPRODUCTION IN PART OR AS A WHOLE WITHOUT THE WRITTEN PERMISSION OF VUTEC CORPORATION IS PROHIBITED

NOTES:

1. DASHED LINE CONNECTION BY OTHERS.
2. ALL ELECTRICAL CONNECTIONS AND WIRING MUST CONFORM WITH LOCAL AND STANDARD REGULATIONS.
3. RECOMENDED WIRE 1mm² MINIMUM



THE INFORMATION
CONTAINED IN THIS
DRAWING IS THE SOLE
PROPERTY OF VUTEC
CORPORATION AND
REPRODUCTION IN PART
OR AS A WHOLE
WITHOUT THE WRITTEN
PERMISSION OF VUTEC
CORPORATION IS
PROHIBITED

VUTEC CORPORATION

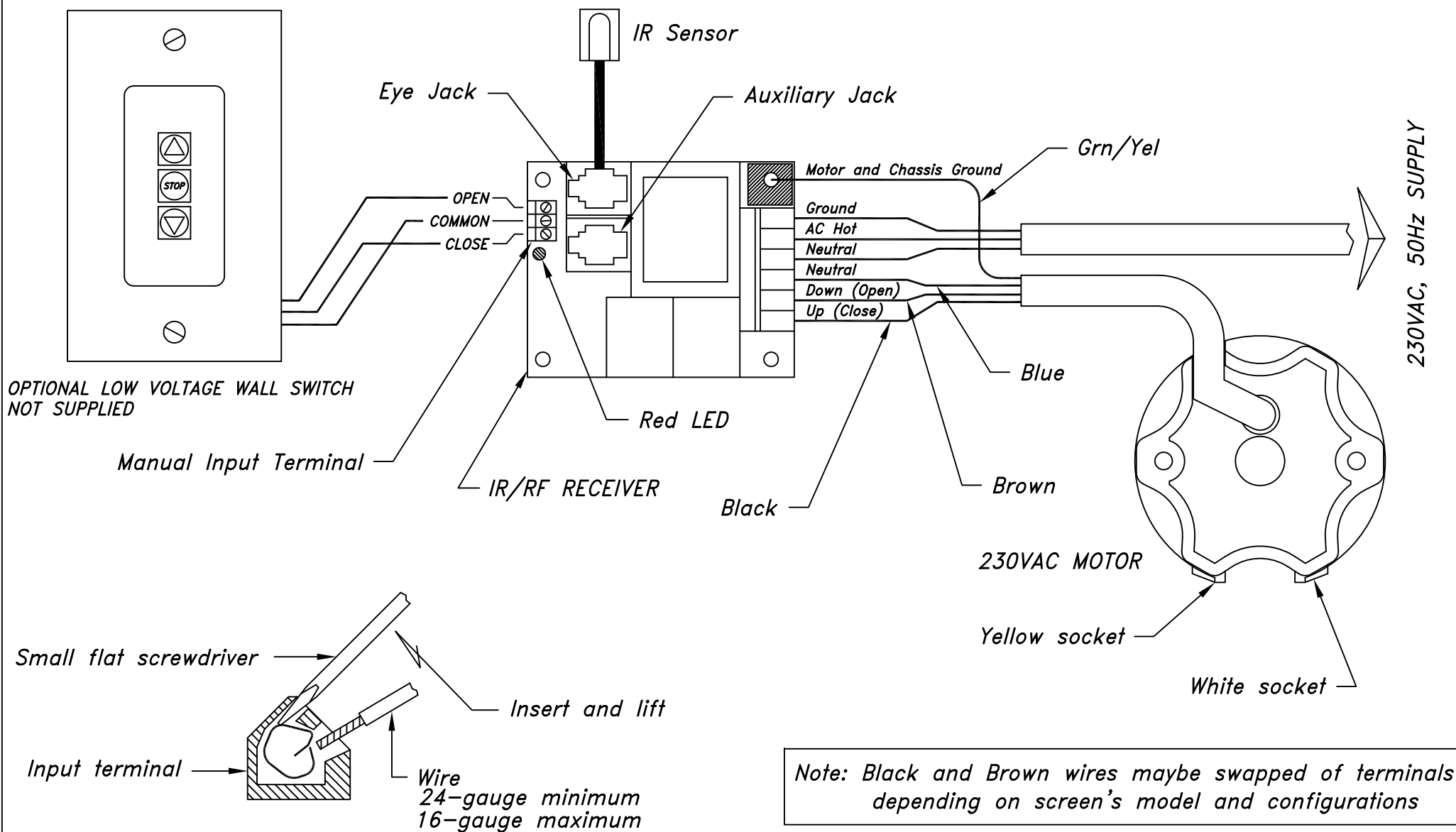
11711 W. SAMPLE ROAD, CORAL SPRINGS, FL 33064

DRAWN BY
04/24/12 PCB
CHECKED BY

DESCRIPTION
IR REMOTE CONTROL
ARTSCREEN - 120VAC

DRAWING NO.
IR-R2AUH_120

SCALE: NONE REV A



THE INFORMATION
CONTAINED IN THIS
DRAWING IS THE SOLE
PROPERTY OF VUTEC
CORPORATION AND
REPRODUCTION IN PART
OR AS A WHOLE
WITHOUT THE WRITTEN
PERMISSION OF VUTEC
CORPORATION IS
PROHIBITED

VUTEC CORPORATION

11711 W. SAMPLE ROAD, CORAL SPRINGS, FL 33064

DRAWN BY
04/24/12 PCB
CHECKED BY

DESCRIPTION
IR REMOTE CONTROL
ARTSCREEN - 230VAC

DRAWING NO.
IR-R2AUH_230

SCALE: NONE REV A

