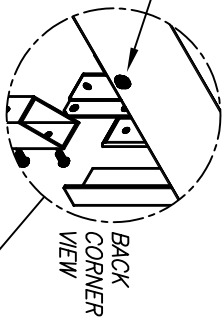


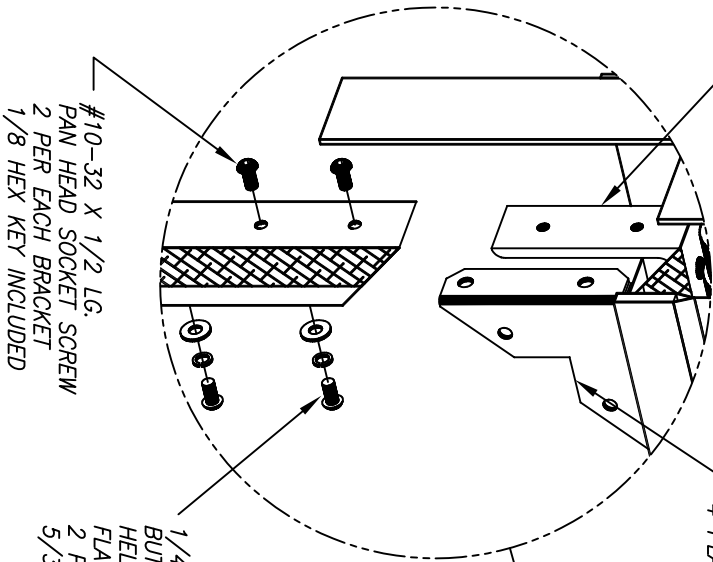
LOOSEN BACK CORNER SCREWS TO
ALLOW SIDE FRAME
INSERTIONS.



BACK
CORNER
VIEW

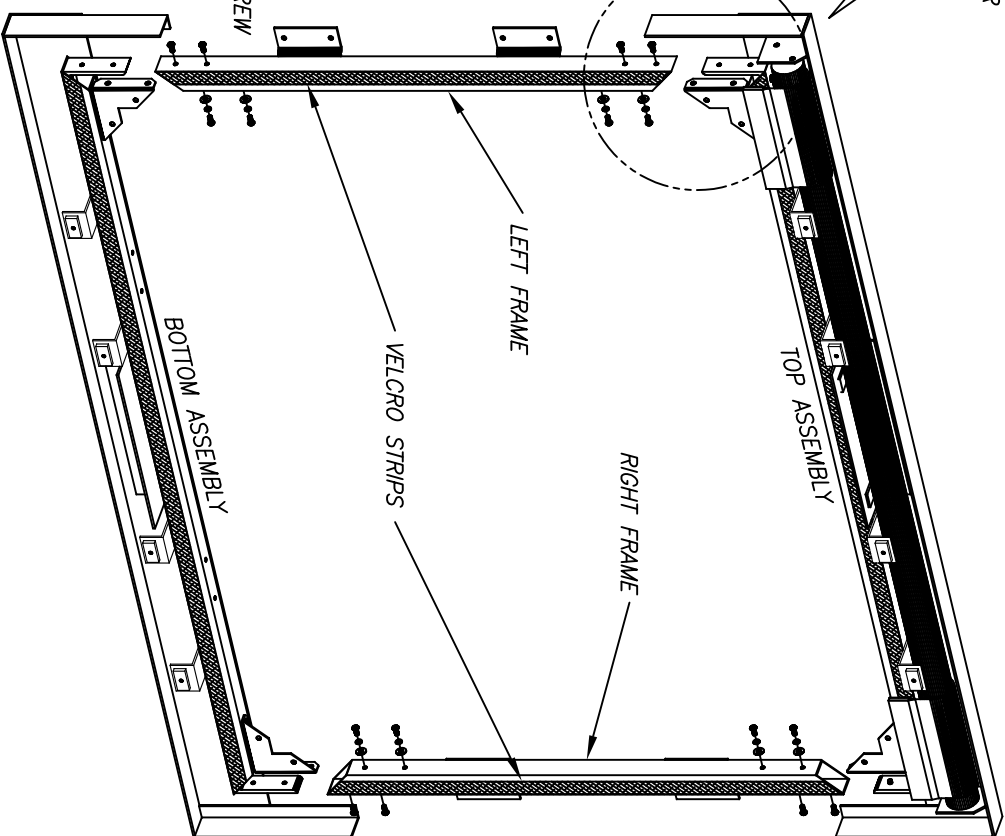
CORNER BRACKET
4 PLACES

REINFORCE BRACKET
4 PLACES



#10-32 X 1/2 LG.
PAN HEAD SOCKET SCREW
2 PER EACH BRACKET
1/8 HEX KEY INCLUDED

1/4-20 X 1/2 LG.
BUTTON HEAD SOCKET SCREW
HELICAL LOCK WASHER
FLAT WASHER
2 PER EACH BRACKET
5/32 HEX KEY INCLUDED



STEP 1

- 1 - REMOVE THE COVERS OF THE TOP AND BOTTOM ASSEMBLIES.
- 2 - ATTACH LEFT FRAME AND RIGHT FRAME TO BOTH ASSEMBLIES AS SHOWN.
NOTE: LOOSEN BACK CORNER SCREWS TO ALLOW INSERTION AS SHOWN.
- 3 - MEASURE THE DIAGONALS (SEE STEP 2) TO CHECK SQUARENESS. THE DIAGONAL MEASUREMENTS MUST BE EQUAL. MAKE ADJUSTMENTS AS NECESSARY.
- 4 - TIGHTEN ALL SCREWS ONCE THE FINISH FRAME IS SQUARE.
- 5 - ATTACH WIRED ELECTRICAL BOARDS TO ELECTRICAL PLATE (NOT SHOWN)

VUTECH CORPORATION

11711 W SAMPLE ROAD, CORAL SPRINGS FL 33065

THE INFORMATION
CONTAINED IN THIS
DRAWING IS THE SOLE
PROPERTY OF VUTECH
CORPORATION AND
REPRODUCTION IN PART
OR AS A WHOLE
WITHOUT THE WRITTEN
PERMISSION OF VUTECH
CORPORATION IS
PROHIBITED

DRAWN BY
04/07/08 HN

DESCRIPTION
ASSEMBLY DRAWING

DRAWING NO.

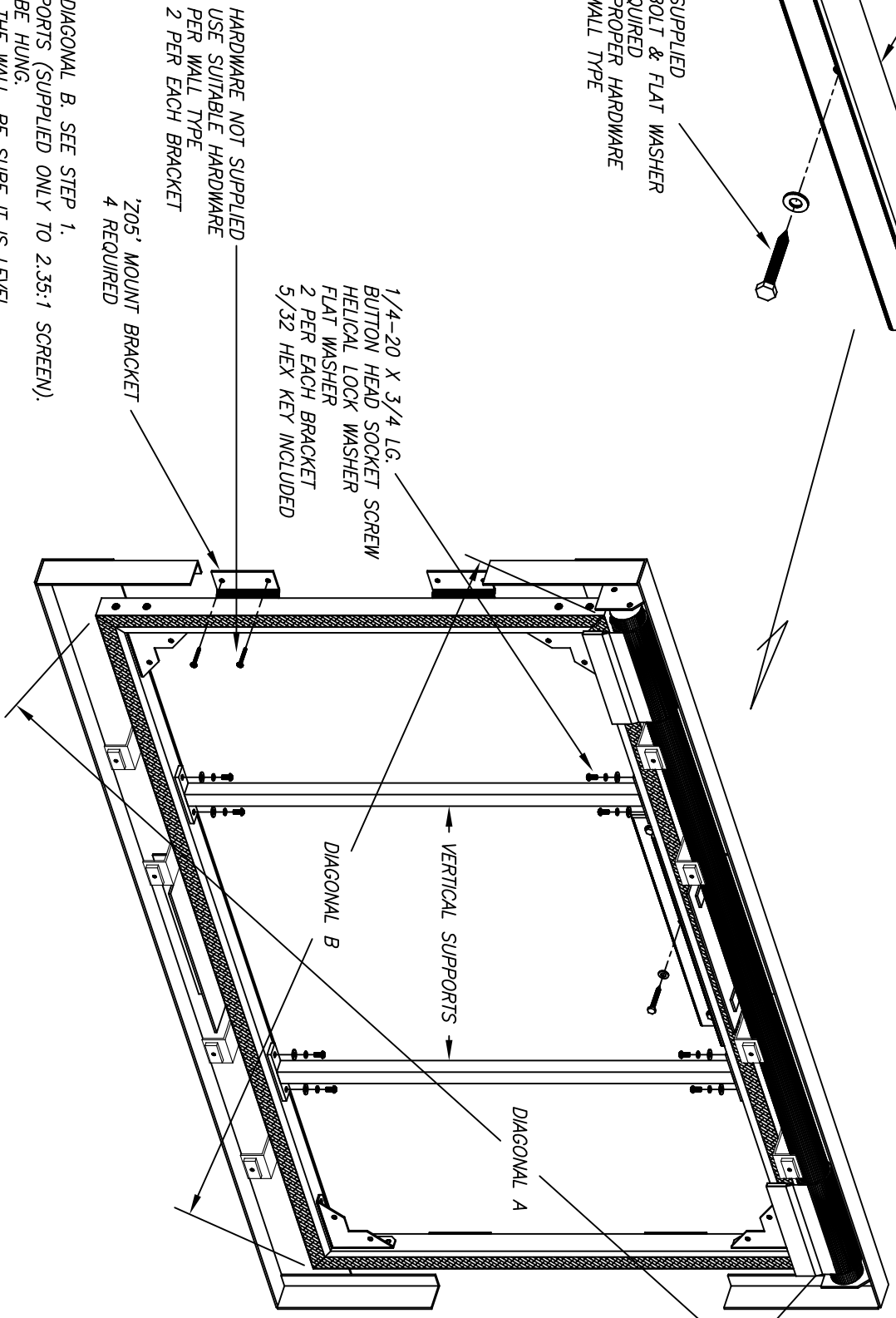
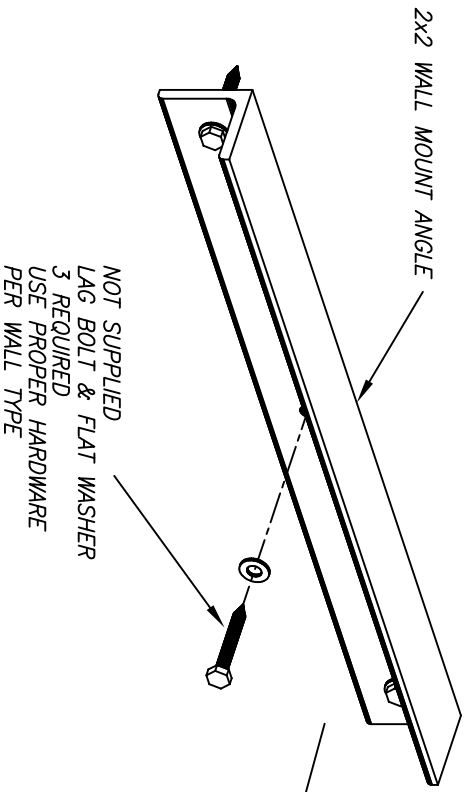
VISION XFL VISION XFL

VISION XFL\XFL-235_INSTL_SPL3
RECESSED FR MT COVERS

REVIEWED BY
3/17/2017

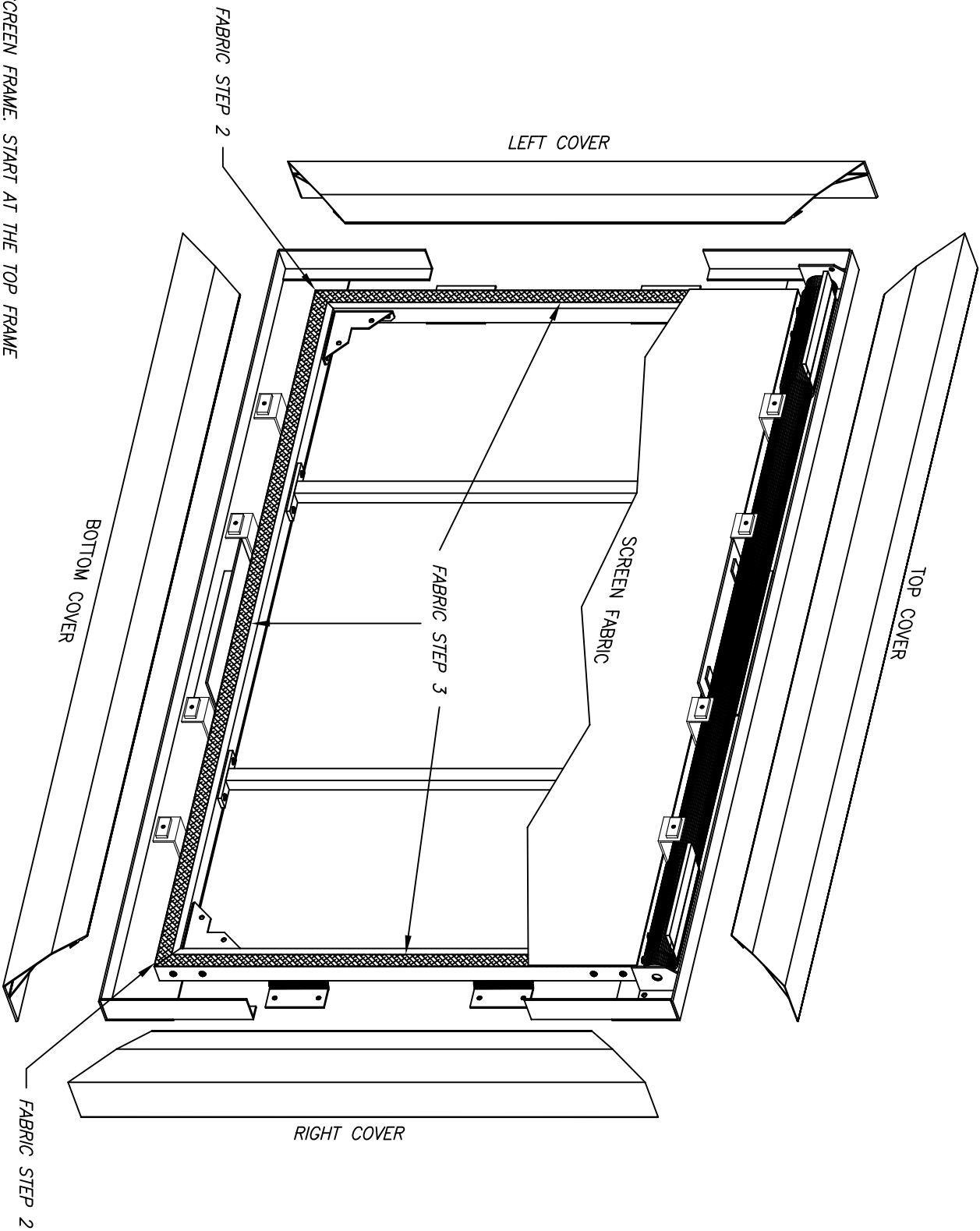
VISION XFL VISION XFL

SCALE: 1/12
REV B



- STEP 2**
- 1 - MEASURE DIAGONAL A AND DIAGONAL B. SEE STEP 1.
 - 2 - ATTACH TWO VERTICAL SUPPORTS (SUPPLIED ONLY TO 2.35:1 SCREEN).
 - 3 - THE SCREEN IS READY TO BE HUNG.
ATTACH THE 2x2 ANGLE TO THE WALL. BE SURE IT IS LEVEL.
 - 4 - HANG THE SCREEN TO THE WALL ANGLE. MOVE SIDE TO SIDE AS NEEDED.
CHECK THE SCREEN LEVEL.
- INSTALL THE SCREWS TO THE 'ZOS' BRACKETS TO HOLD IT IN LOCATION.

<p>THE INFORMATION CONTAINED IN THIS DRAWING IS THE SOLE PROPERTY OF VITEC CORPORATION AND REPRODUCTION IN PART OR AS A WHOLE WITHOUT THE WRITTEN PERMISSION OF VITEC CORPORATION IS PROHIBITED</p>		<p>VITEC CORPORATION 11711 W SAMPLE ROAD, CORAL SPRINGS FL 33065</p>	
<p>DRAWN BY 04/07/08 HN</p>	<p>DESCRIPTION ASSEMBLY DRAWING VISION Xfv</p>	<p>DRAWING NO. VISION Xfv\Xfv-235_INSTL_SPL3 RECESSED FR MT COVERS</p>	<p>SCALE: 1/10</p>
<p>REVISED BY 3/1/2017 BJAYP</p>			<p>REV B</p>



STEP 3

- 1 - APPLY SCREEN FABRIC TO SCREEN FRAME. START AT THE TOP FRAME AS SHOWN. LIFT UP THE MASK SCREENS AS NEEDED.
- 2 - APPLY TWO LOWER CORNERS OF FABRIC TO LOWER CORNERS OF FRAME.
- 3 - APPLY FABRIC TO MIDDLE PART OF EACH HORIZONTAL AND VERTICAL FRAMES.
- 4 - CONTINUE TO APPLY THE REMAINING FABRIC TO THE REST OF FRAMES.
- 5 - SMOOTH OUT WRINKLES BY REMOVING AND REAPPLYING FABRIC TO FRAME.
- 6 - PREPARE ELECTRICAL CONNECTIONS. TEST RUN THE MASK SCREEN. MAKE ALL NECESSARY ADJUSTMENTS AS REQUIRED.
- 7 - INSTALL COVERS (CHECK PIECE LABEL) TO COMPLETE THE INSTALLATION. ADD VELVET DOTS TO COVER SCREW HEADS OF COVERS.

VUTEC CORPORATION	
2741 N.E. 4th AVENUE. POMPAN0 BEACH, FL 33064	
DRAWN BY 04/07/08 HN	DESCRIPTION
REVISED BY 3/17/2017 BJAPP	ASSEMBLY DRAWING VISION Xfv
DRAWING NO. VISION Xfv\Xfv-235_INSTL_SPL3 RECESSED FR MT COVERS	
SCALE: 1/10	REV B