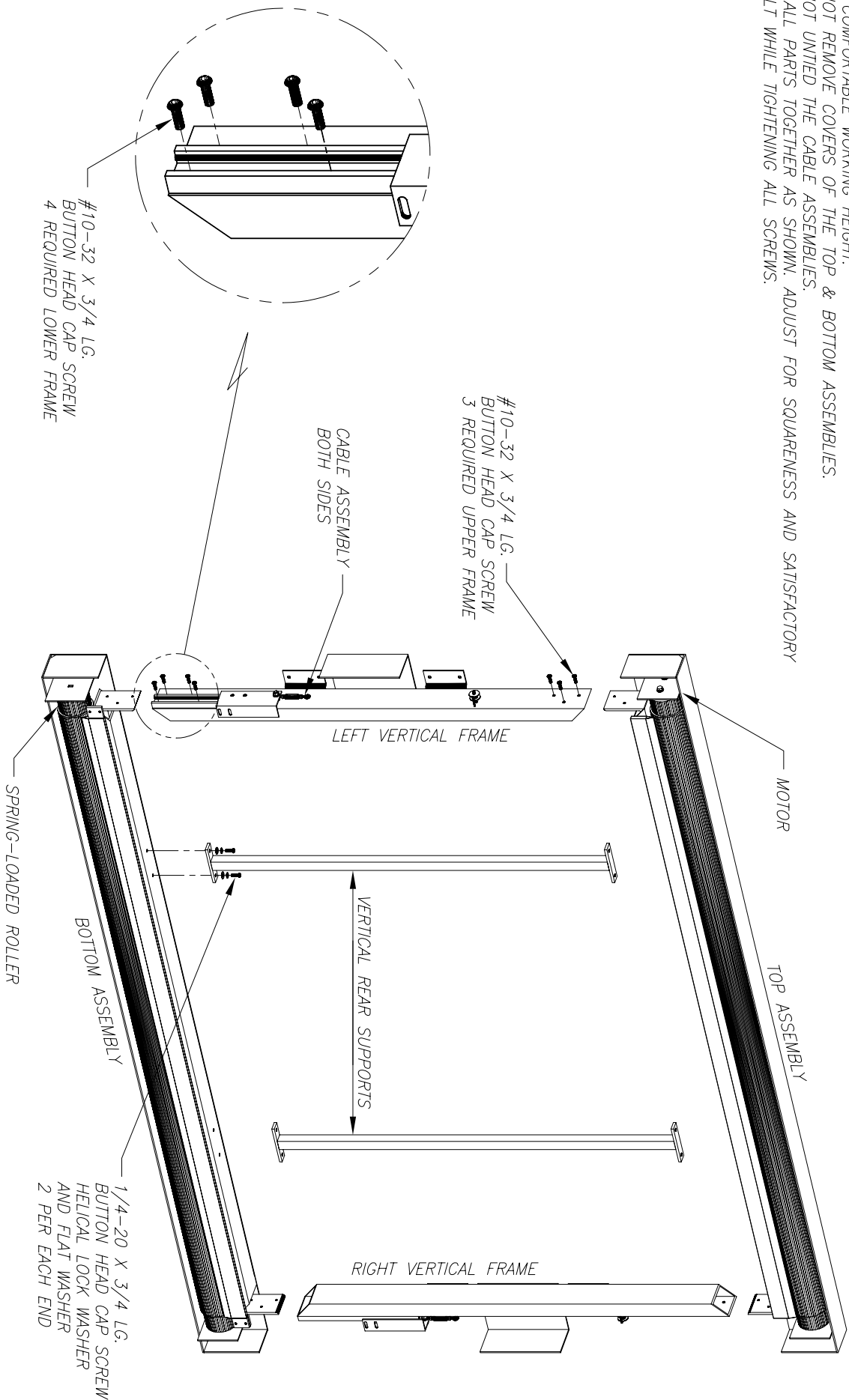


STEP #1

- 1 - ASSEMBLING SHOULD BE DONE ON A CLEANED AND FLAT SURFACE. PREFERABLY AT A COMFORTABLE WORKING HEIGHT.
- 2 - DO NOT REMOVE COVERS OF THE TOP & BOTTOM ASSEMBLIES.
- 3 - DO NOT UNTIED THE CABLE ASSEMBLIES.
- 4 - JOIN ALL PARTS TOGETHER AS SHOWN. ADJUST FOR SQUARENESS AND SATISFACTORY RESULT WHILE TIGHTENING ALL SCREWS.



VUTECH CORPORATION

2741 N.E. 4th AVENUE, POMPANO BEACH, FL 33064

DESCRIPTION

TRI-ASPECT FIXED FRAME SCREEN

VISION XFH - LARGE

DRAWING NO.

XFH-INSTL-3D1

DRAWN BY

12/11/06 HN

CHECKED BY

12/11/06 HN

RIGHT VERTICAL FRAME

VERTICAL REAR SUPPORTS

LEFT VERTICAL FRAME

CABLE ASSEMBLY
BOTH SIDES

#10-32 X 3/4 LG.
BUTTON HEAD CAP SCREW
3 REQUIRED UPPER FRAME

#10-32 X 3/4 LG.
BUTTON HEAD CAP SCREW
4 REQUIRED LOWER FRAME

SPRING-LOADED ROLLER

BOTTOM ASSEMBLY

1/4-20 X 3/4 LG.
BUTTON HEAD CAP SCREW
HELICAL LOCK WASHER
AND FLAT WASHER
2 PER EACH END

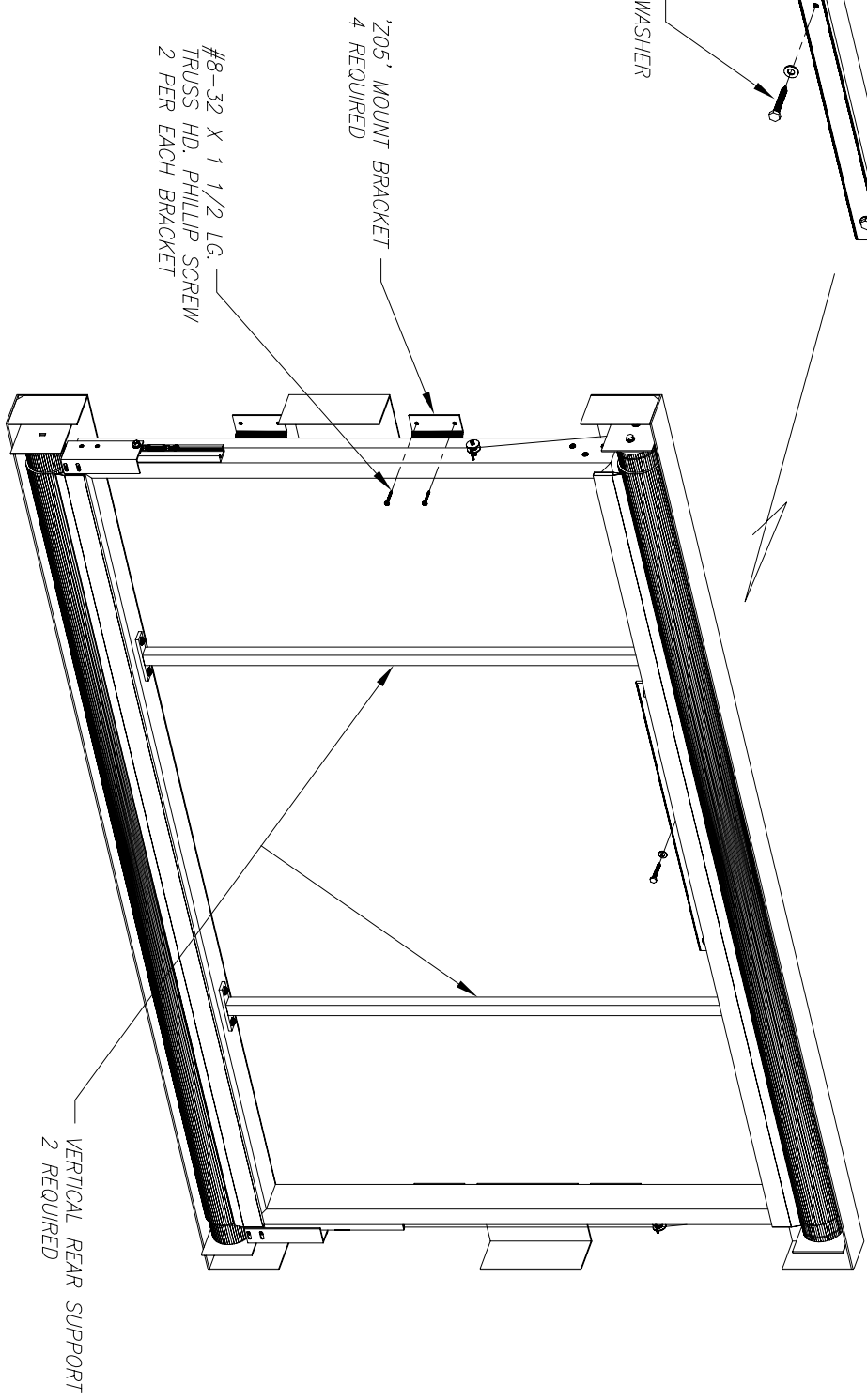
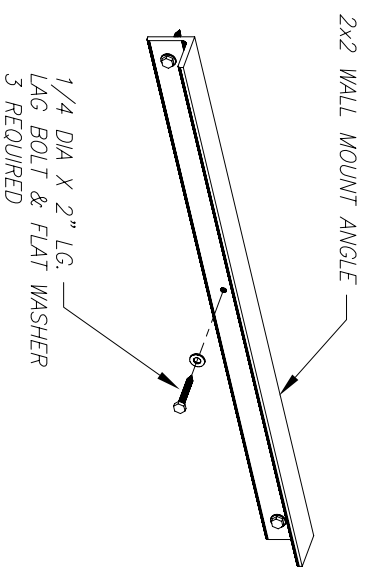
SHOWN WITHOUT COVERS AND SCREEN SURFACE

MOTOR

TOP ASSEMBLY

SCALE: 1/14

REV
A



STEP #2

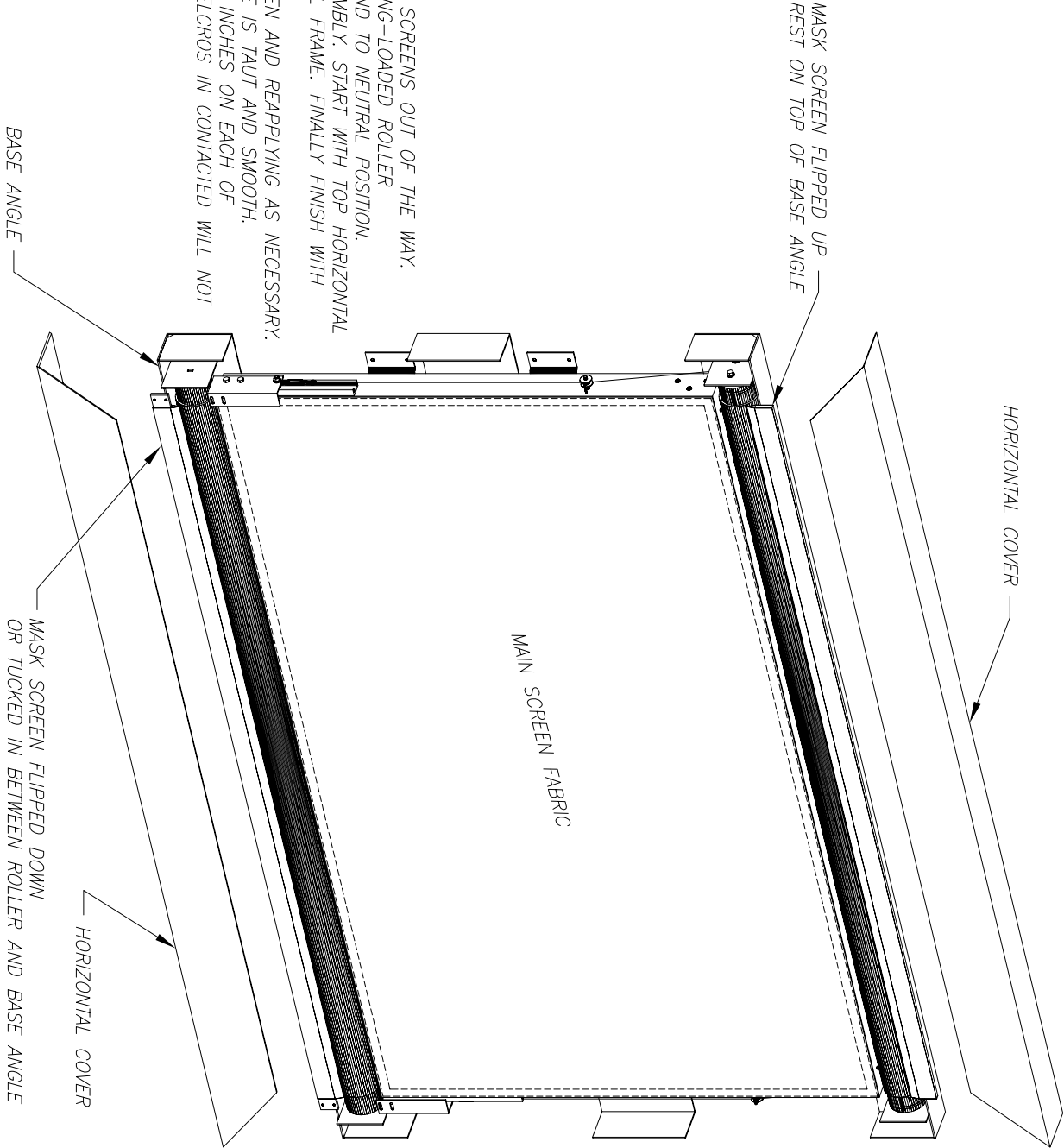
- 1 - LOCATE AND INSTALL THE WALL MOUNT ANGLE. BE SURE THAT IT IS LEVEL. HOLES MAY BE DRILLED AND SUITABLE WALL ANCHORS ARE REQUIRED FOR PROPER INSTALLATION.
- 2 - HANGE THE SCREEN ON THE WALL MOUNT ANGLE. ADJUST AND CENTER THE SCREEN AS REQUIRED.
- 3 - INSTALL THE SCREWS (OR SUITABLE WALL ANCHORS) TO THE '205' BRACKETS TO COMPLETELY SECURING THE SCREEN.

SCREEN FRAME ASSEMBLY
SHOWN WITHOUT COVERS AND SCREENS TO ILLUSTRATE HANGING BRACKETS

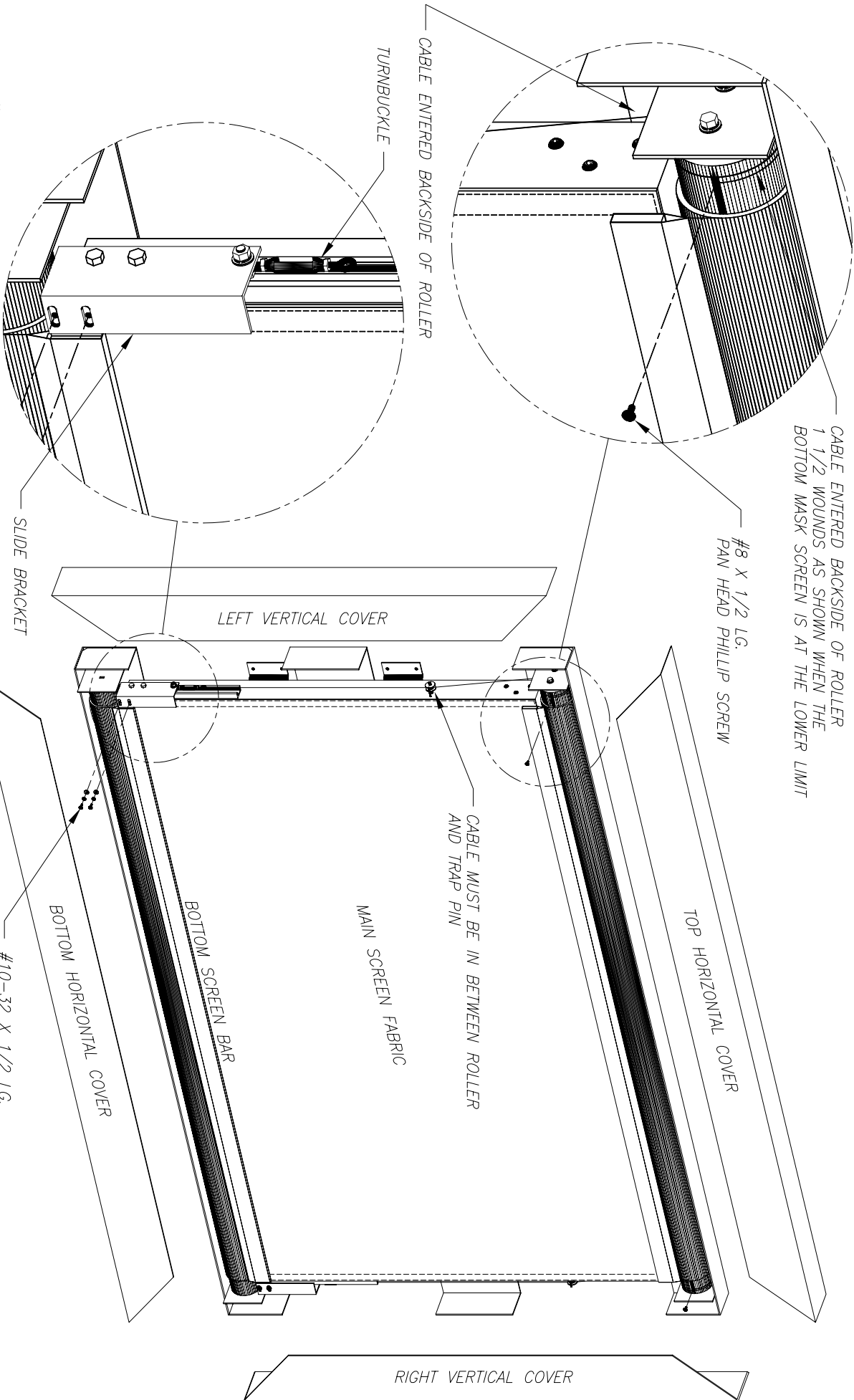
VUTEC CORPORATION	
DRAWN BY 12/11/06 HN	DESCRIPTION 2741 N.E. 4th AVENUE. POMPANO BEACH, FL 33064
TRI-ASPECT FIXED FRAME SCREEN VISION XFH - LARGE	
CHECKED BY	DRAWING NO. XFH-INSTL-3D2
SCALE: 1/14	REV A

STEP #3

- 1 – REMOVE TOP & BOTTOM HORIZONTAL COVERS.
- 2 – TEMPORARILY FLIPS THE TOP & BOTTOM MASK SCREENS OUT OF THE WAY. THE BOTTOM MASK SCREEN WOUND TO A SPRING-LOADED ROLLER SO CAREFULLY NOT TO LET THE SCREEN REMIND TO NEUTRAL POSITION.
- 3 – APPLY THE MAIN SCREEN TO THE FRAME ASSEMBLY. START WITH TOP HORIZONTAL FRAME THEN ATTACHES TO BOTTOM HORIZONTAL FRAME. FINALLY FINISH WITH THE TWO VERTICAL FRAMES.
- 4 – REMOVE WRINKLES BY PEELING OFF THE SCREEN AND REAPPLYING AS NECESSARY. REPEAT AS OFTEN UNTIL THE SCREEN SURFACE IS TAUT AND SMOOTH.
- 5 – THE COVERS WHEN APPLIED SHALL COVER 1.5 INCHES ON EACH OF THE FOUR SIDES. SLIGHT WRINKLES DUE TO VELCROS IN CONTACTED WILL NOT BE SEEN.



VUTEC CORPORATION		DRAWING NO.	
2741 N.E. 4th AVENUE. POMPANO BEACH, FL 33064		XFH-INSTL-3D3	
DRAWN BY	DESCRIPTION	SCALE: 1/14	
12/11/06 HN	TRI-ASPECT FIXED FRAME SCREEN	REV	
CHECKED BY	VISION XFH – LARGE	A	

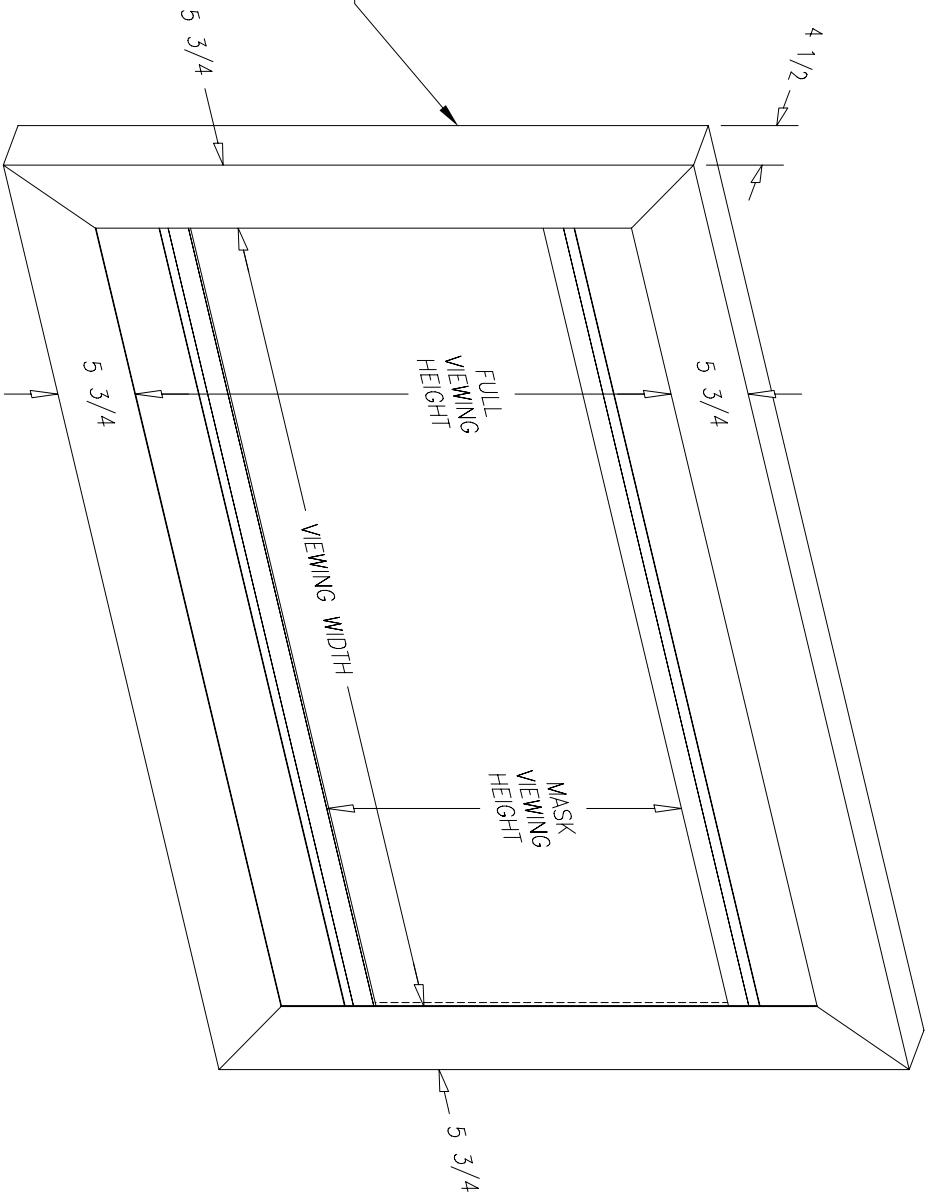


STEP #4

- 1 - UNITED THE CABLE ASSEMBLIES AND ATTACH THE CABLES TO THE TOP ROLLER.
- 2 - BE SURE EACH CABLE IS SPIRALLY WOUNDS ONTO THE ROLLER. TIGHTEN THE SCREWS TO SECURE THE CABLES TO THE ROLLER.
- 3 - A PERSON IS REQUIRES AT EACH END OF THE BOTTOM SCREEN BAR TO HOLD IT UP AND PLACE BEHIND THE SLIDE BRACKETS.
- 4 - ATTACH BOTTOM SCREEN BAR TO THE SLIDE BRACKETS. BECAUSE THE SCREEN BAR IS VERY LONG. IT MAY SAG OR BOW AT THE CENTER SO A PERSON IS NEEDS TO KEEP IT STRAIGHT WHILE THE SECOND PERSON TIGHTEN THE SCREWS.

VUTEC CORPORATION		
DRAWN BY	2741 N.E. 4th AVENUE. POMPANO BEACH, FL 33064	DRAWING NO.
12/11/06 HN	TRI-ASPECT FIXED FRAME SCREEN	XFH-INSTL-3D4
CHECKED BY	VISION XFH - LARGE	SCALE: 1/14
		REV A

INSTALL LEFT & RIGHT VERTICAL COVERS LAST
TO ALLOW FOR ELECTRICAL CONNECTIONS
AND MECHANICAL ADJUSTMENTS OF SCREEN



STEP #5

- 1 – REFERRING TO THE WIRING DIAGRAM, CONNECT POWER TO THE SCREEN. CONNECT ALL NECESSARY SWITCH AND CABLES AS REQUIRED.
- 2 – OPERATE THE SCREEN AND CHECK THE LOWER MASK SCREEN MOVEMENT. IT SHOULD GOING UP AND DOWN SMOOTHLY WITHOUT ANY HESITATION. ADJUST HORIZONTAL LEVEL BY TURNING THE TURNBUCKLES. BE SURE TO TIGHTEN THE HEX NUTS OF THE TURNBUCKLES WHEN FINISHED.
- 3 – OBSERVE THE LIFT CABLES WHILE THE MASK SCREENS ARE MOVING. IT SHOULD PRODUCE SPIRALLY WOUNDS ONTO THE ROLLER WITHOUT CROSSING OVER ON ITSELF. MAKE ADJUSTMENTS AS NECESSARY.
- 4 – CAREFULLY INSPECT THE SCREEN OPERATIONS BEFORE PUTTING ON THE COVERS. ADD BLACK VELVET DOTS TO COVER THE SCREW HEADS.

VUTECH CORPORATION

DRAWN BY

12/11/06 HN

DESCRIPTION

2741 N.E. 4th AVENUE. POMPANO BEACH, FL 33064
TRI-ASPECT FIXED FRAME SCREEN
VISION XFH – LARGE

DRAWING NO.

XFH-INSTL-3D4

SCALE: 1/14

CHECKED BY

REV

A