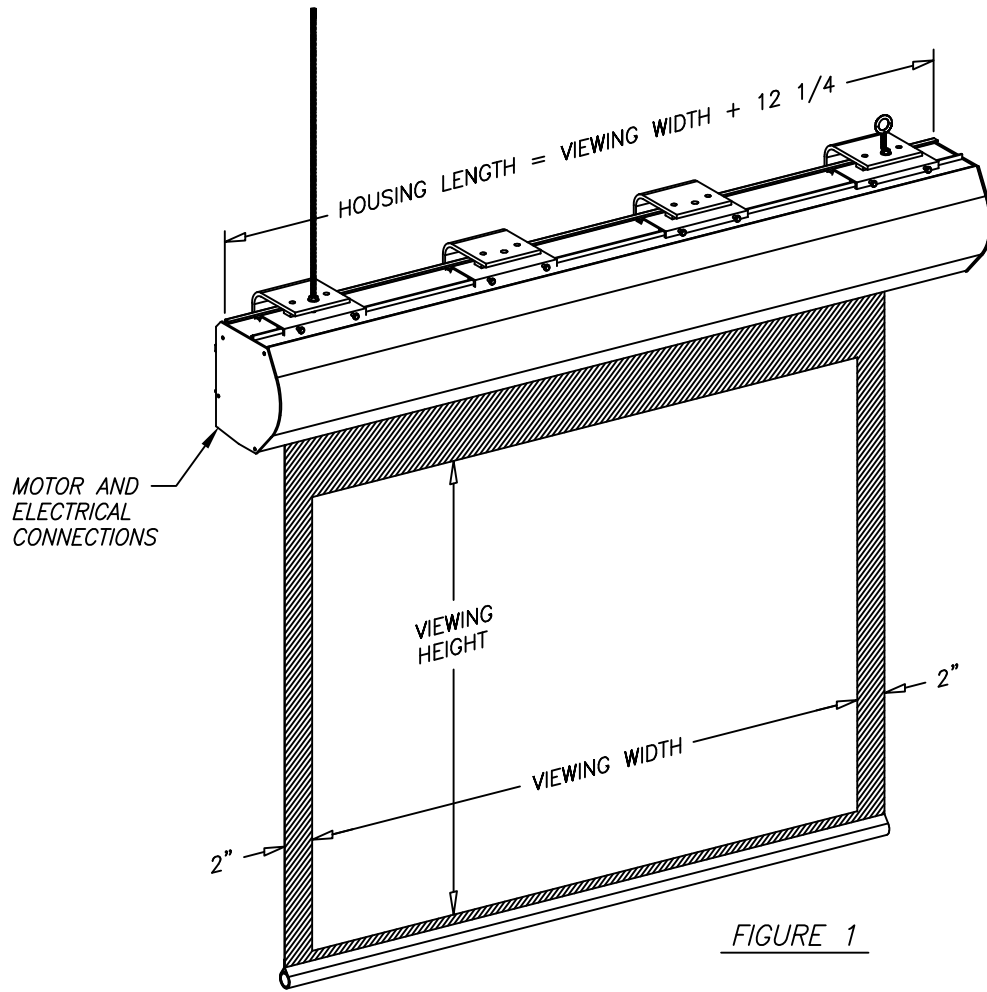


HOUSING LENGTH FOR TAB-TENSIONED SCREEN
VIEWING WIDTH + 20 1/4 \triangle B



STEP 1

- 1 - DETERMINE THE HOUSING LENGTH AND LOCATION TO HANG. INSTALL THE FOUR HANGING BRACKET ASSEMBLIES. (FOLLOW STEPS 2 THROUGH 5).
- 2 - INSTALLERS MUST DETERMINE PROPER HARDWARE. WARNING! BE SURE TO USE LOCK NUTS AS END NUTS.
- 3 - HANG THE SCREEN, BE SURE THAT SCREEN IS LEVEL.
- 4 - MAKE SURE THAT ALL HANGING BRACKET LIPS ARE CAPTURED IN HOUSING GROOVES AS SHOWN IN FIG 3.

VUTEC CORPORATION

11711 W. SAMPLE ROAD. CORAL SPRINGS, FL 33065

DRAWN BY
02/23/12 TM

DESCRIPTION
SUSPENDED INSTALLATION
LECTRIC 1-C & 3-C

DRAWING NO.
L1C_L3C-SUSPENDED INSTL

CHECKED BY

SCALE: 1/2 REV B

FIGURE 2

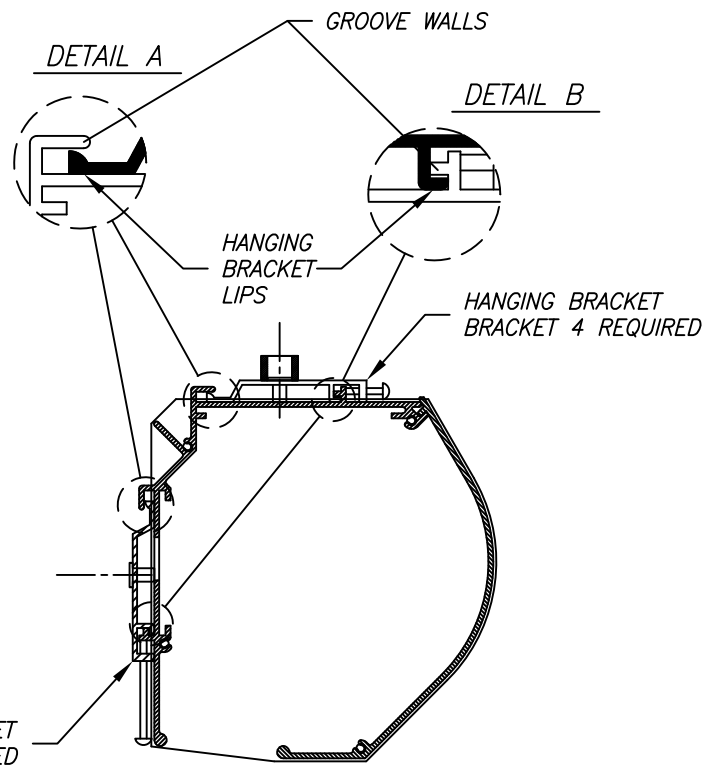
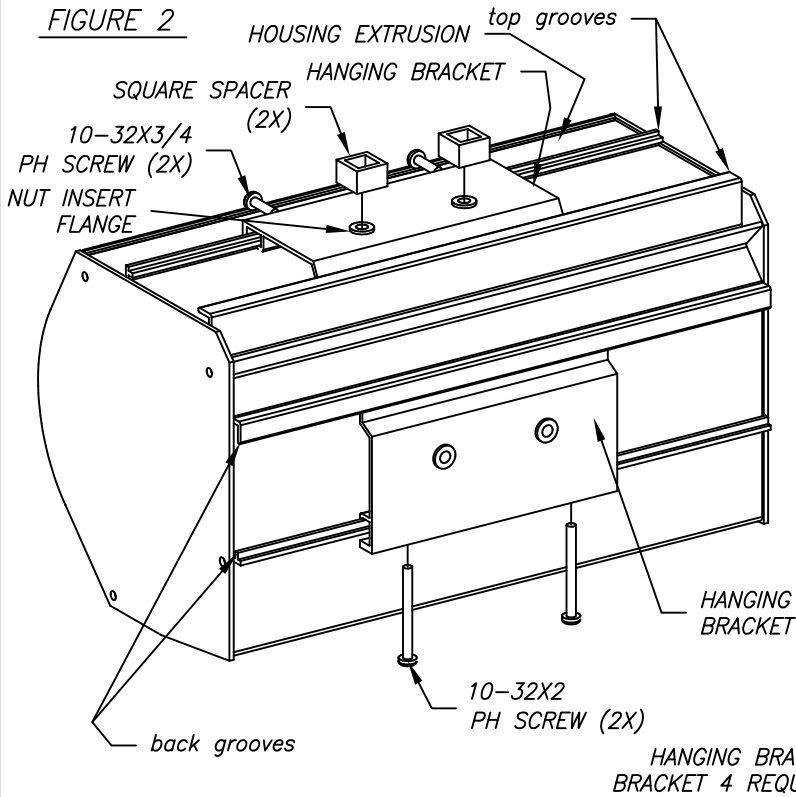


FIGURE 3

STEP 2

- 1 - INSERT HANGING BRACKETS TO TOP AND BACK GROOVES OF HOUSING EXTRUSION AS SHOWN IN FIGURES 2 AND 3.
- 2 - SET SQUARE SPACERS ON TOP OF TOP HANGING BRACKETS CAPTURING NUT INSERT FLANGES.

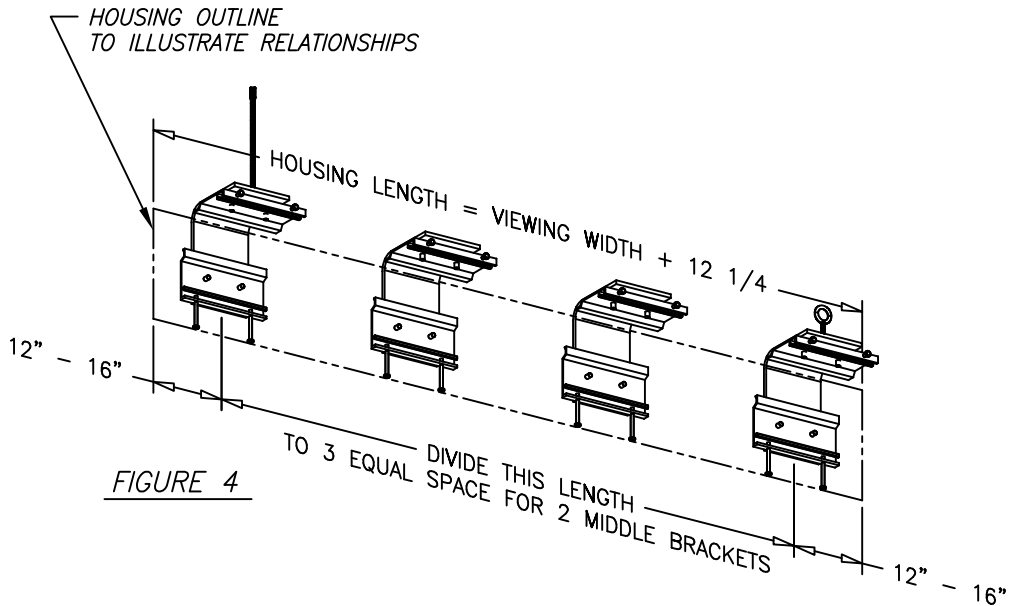


FIGURE 4

STEP 3

- 1 - DISTRIBUTE HANGING BRACKETS ALONG HOUSING LENGTH AS SHOWN IN FIGURE 4,
- 2 - TIGHTEN 10-32 SCREWS. BE SURE THAT HANGING BRACKET LIPS ARE FULLY CAPTURED BY HOUSING GROOVE WALLS AS SHOWN IN DETAILS A AND B OF FIGURE 3.

<h1>VUTEC CORPORATION</h1> <p>11711 W. SAMPLE ROAD. CORAL SPRINGS, FL 33065</p>		
DRAWN BY 02/23/12 TM	DESCRIPTION SUSPENDED INSTALLATION LECTRIC 1-C & 3-C	DRAWING NO. L1C_L3C-SUSPENDED INSTL
CHECKED BY	SCALE: 1/2	REV B

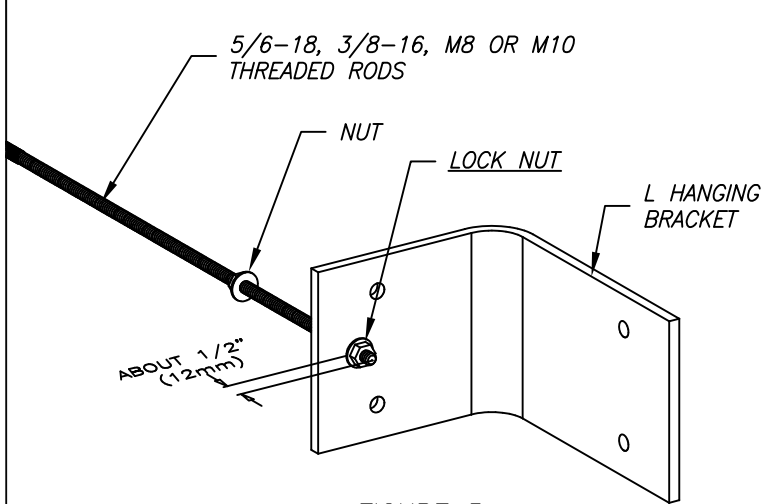


FIGURE 5

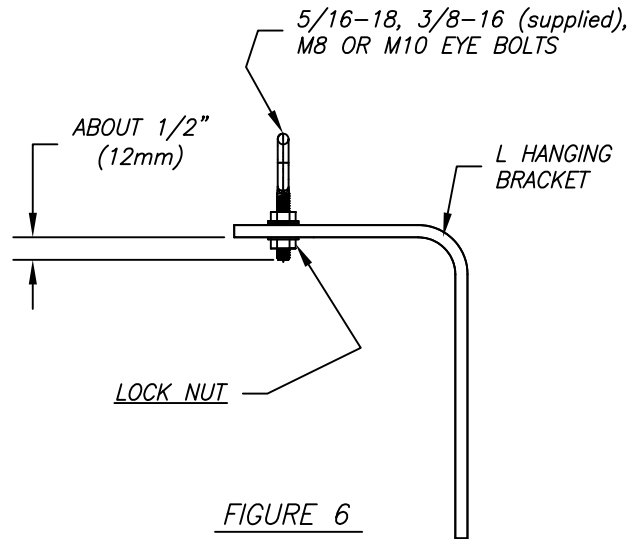


FIGURE 6

STEP 4

- 1 - PREPARE L HANGING BRACKET BY INTRODUCING THREADED ROD OR EYEBOLT THROUGH CENTER SLOT.
- 2 - FASTEN LOCK NUT. ALLOW ONLY ABOUT 1/2" TO PROTRUDE THROUGH BOTTOM OF SLOT AS SHOWN ON FIG 5 AND 6.

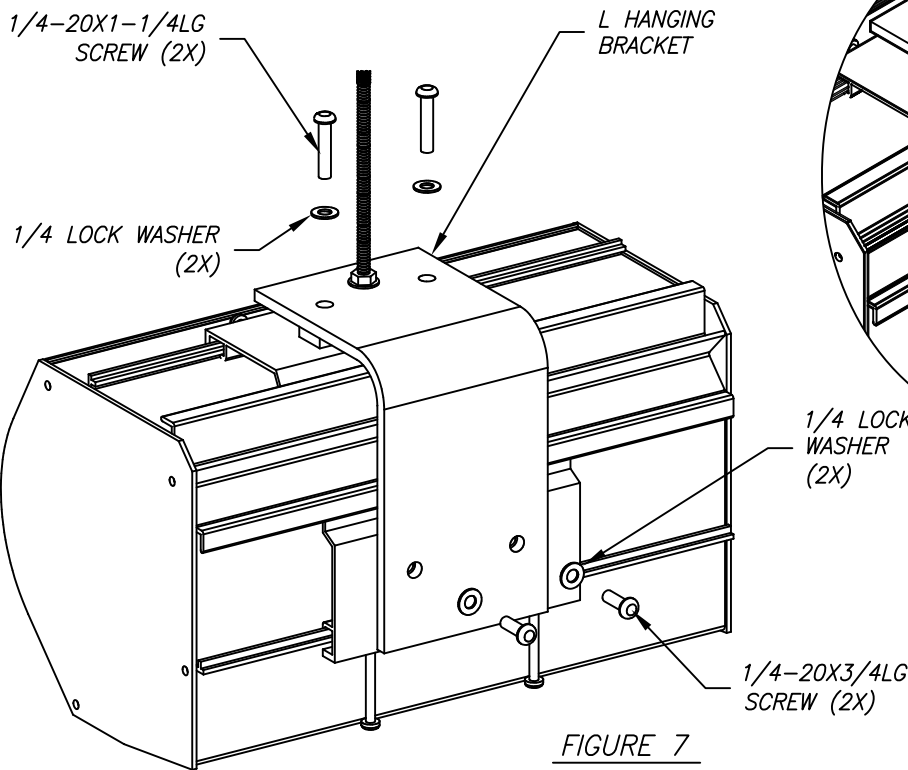


FIGURE 7

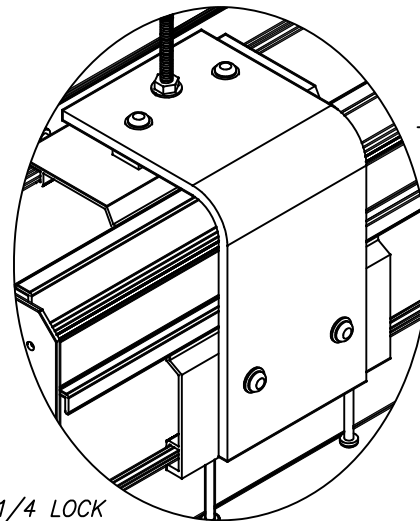


FIGURE 8

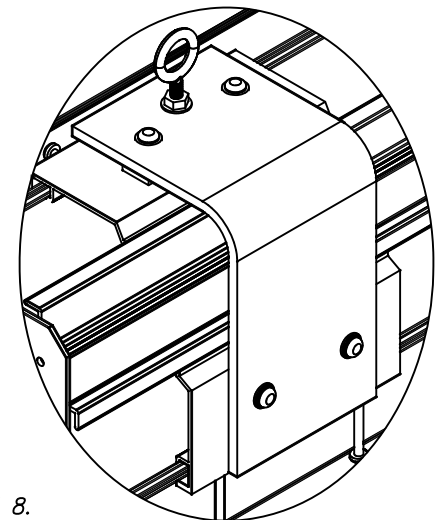


FIGURE 9

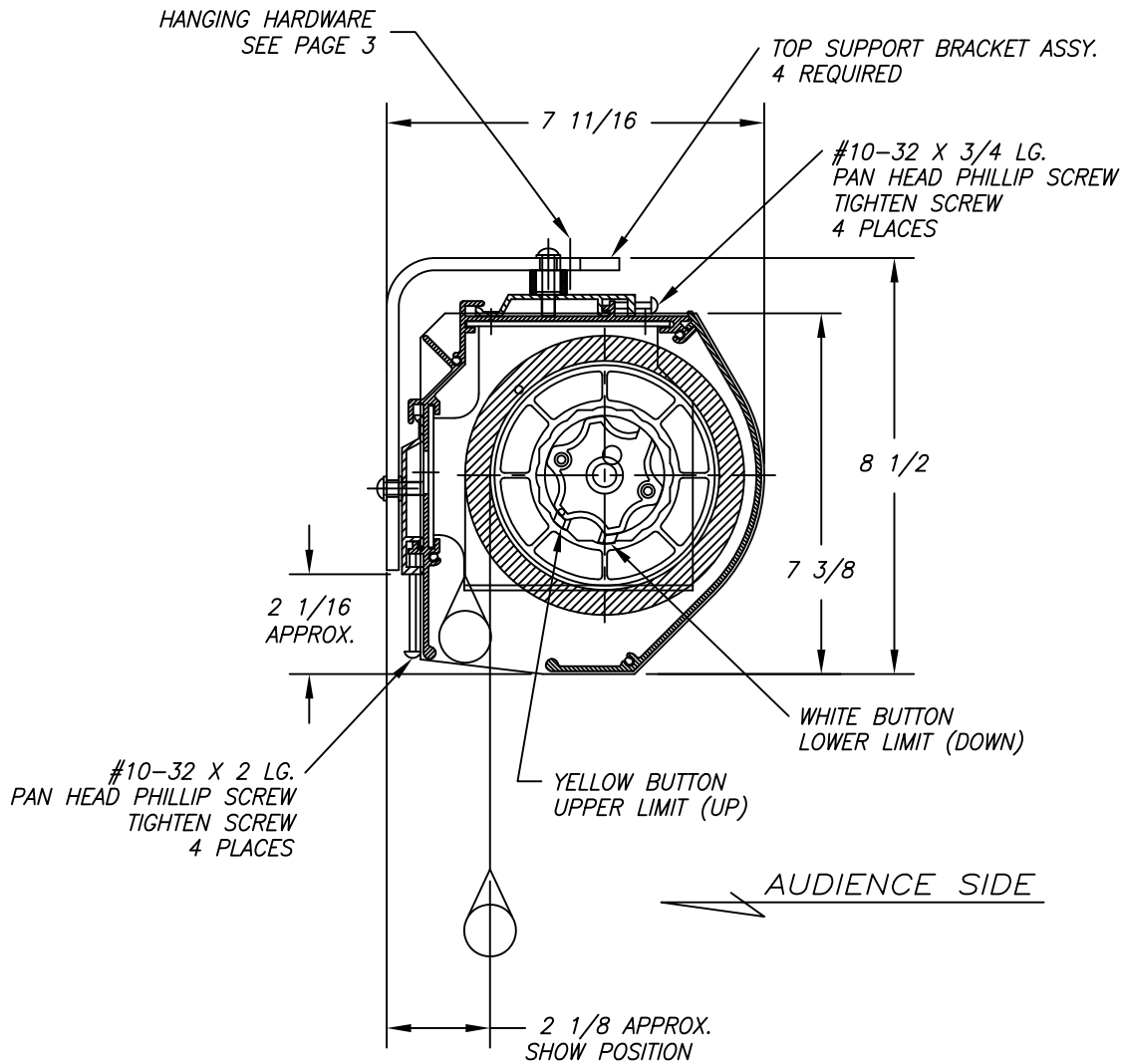
STEP 5

- 1 - FASTEN L HANGING BRACKET TO HANGING BRACKETS AS SHOWN IN FIGURE 7.
- 2 - THREADED ROD OPTION SHOWN IN FIG 7 AND EYE BOLT OPTION SHOWN IN FIGURE 8.

VUTEC CORPORATION

11711 W. SAMPLE ROAD. CORAL SPRINGS, FL 33065

DRAWN BY 02/23/12 TM	DESCRIPTION SUSPENDED INSTALLATION LECTRIC 1-C & 3-C	DRAWING NO. L1C_L3C-SUSPENDED INSTL
CHECKED BY		SCALE: 1/2 REV B

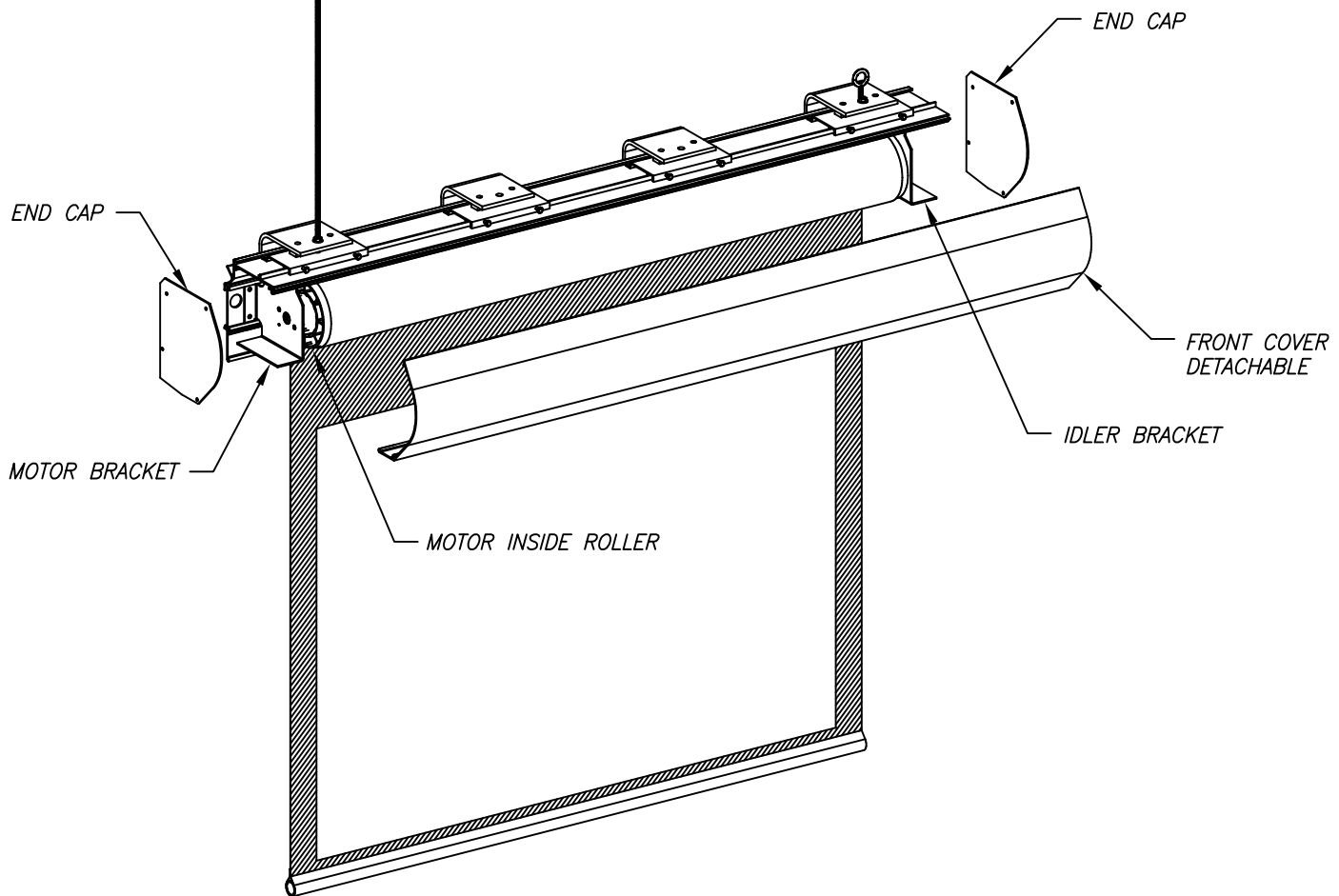


STEP 6

FIGURE 10

- 3 - HOUSING SHOULD HANG STRAIGHT DOWN OF CEILING AS SHOWN IN FIGURE 10.
- 5 - REMOVE LEFT SIDE END CAP TO REVEAL MOTOR WIRING.
- 6 - REVIEW WIRING DIAGRAM AND PREPARE ELECTRICAL CONNECTIONS.
A 4-CONDUCTOR PIGTAIL MAY BE REPLACED WITH NEW 4-CONDUCTOR FOR ONE CONTINUOUS CONNECTION TO THE WALL SWITCH.

VUTEC CORPORATION		
11711 W. SAMPLE ROAD. CORAL SPRINGS, FL 33065		
DRAWN BY 02/23/12 TM	DESCRIPTION SUSPENDED INSTALLATION LECTRIC 1-C & 3-C	DRAWING NO. L1C_L3C-SUSPENDED INSTL
CHECKED BY		SCALE: 1/2 REV B



SERVICING THE MOTOR OR REPLACING NEW SCREEN ROLLER

- 1 - WARNING: THE FOLLOWING STEPS SHOULD NOT BE DONE UNLESS ALL HANGING MOUNT BRACKET ASSEMBLIES ARE INSTALLED.
- 2 - REMOVE THE END CAPS WHILE SUPPORTING THE FRONT COVER.
- 3 - DETACH THE FRONT COVER FROM THE HOUSING.
- 4 - TURN OFF POWER TO THE SCREEN AND DISCONNECT MOTOR WIRES FROM TERMINAL STRIP.
- 5 - SUPPORT THE ROLLER WHILE LOOSEN THE SET SCREWS OF THE IDLER BRACKET. SLIDE IT TOWARD THE RIGHT END TO CLEAR THE ROLLER SHAFT.
- 6 - MOVE THE ROLLER INCLUDING THE MOTOR SLIGHTLY TO THE RIGHT; THE MOTOR HEAD SHOULD BECOME CLEAR OF ITS BRACKET.
- 7 - LOWER THE COMPLETE ROLLER TO A SAFE WORKING LEVEL. THE MOTOR MAY BE PULLED OUT OF THE ROLLER TUBE.
- 8 - REVERSING THE STEPS TO REINSTALL THE COMPLETE ROLLER ASSEMBLY.
- 9 - BE SURE THE MOTOR LIMIT BUTTONS FACING THE OPENING OF THE HOUSING WHEN PLACING IT BACK. SEE FIGURE 10 OF STEP 6.

VUTEC CORPORATION

11711 W. SAMPLE ROAD. CORAL SPRINGS, FL 33065

DRAWN BY

02/23/12 TM

CHECKED BY

DESCRIPTION

SUSPENDED INSTALLATION
LECTRIC 1-C & 3-C

DRAWING NO.

L1C_L3C-SUSPENDED INSTL

SCALE: 1/2

REV B